

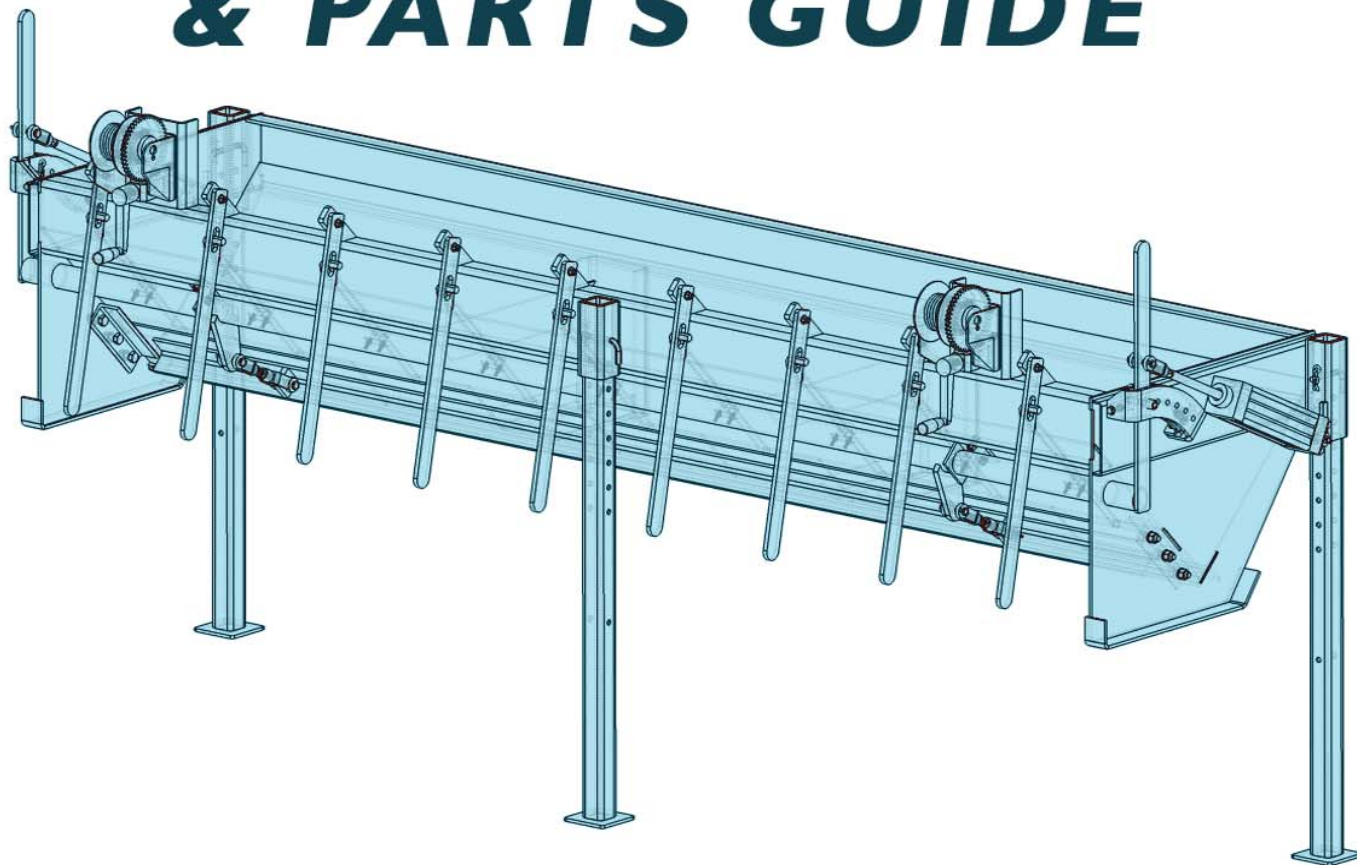
CONCORD

ROAD EQUIPMENT, INC.

CRE-100

SERIES CHIP SPREADER

OPERATION MANUAL & PARTS GUIDE



**FOR PARTS & SERVICE PLEASE
CONTACT YOUR AUTHORIZED
CONCORD DEALER**

**CONCORD ROAD EQUIPMENT, MFG
348 CHESTER STREET
PAINESVILLE, OHIO 44119**

**1-800-942 ROAD (7623)
1-440-357-5344**

2016

TABLE OF CONTENTS

Warranty Registration Form	2
Warranty	3
Safety Instructions	4
Mounting instructions	5, 7-8
Operation & Maintenance Instructions	6
Under Tailgate Chip Spreader Parts List – (CRE-108CS CRE-120CS).....	9-13
Winch Mounting.....	9
Leg Mounting.....	10
Shut-off Gates	11
Main Door.....	12
Option: Air Operated Main Door	13

Warranty Registration Record

Please complete the
Warranty Registration Form for your records.

Model Purchased: _____ Serial

In Service Date:

Owners Complete Mailing Address:

Telephone #: _____

Fax #: _____

I have read, understand, and will apply the
contents of the Concord warranty, safety,
operation and maintenance manual.

Owners Signature

Owners Name Printed

CONCORD ROAD EQUIPMENT MFG., INC.
PAINESVILLE, OHIO

WARRANTY

Concord Road Equipment Mfg., Inc. warranties all new CRE products manufactured by this company according to the terms as set forth below, BUT EXCLUDES ANY IMPLIED WARRANTY OF MERCHANTABILITY and there are no warranties which extend beyond the description of the face of this warranty.

Should any Concord Road Equipment product prove defective in material or workmanship, under normal service and use, within a period of one year from date of shipping to the original purchaser, CRE shall repair or replace if the following conditions have been met: the equipment was properly set up, adjusted, used and operated by a trained person. Which on inspection by CRE appears to have been defective in workmanship or material, but the cost of labor in replacement of these parts will be paid by the purchaser and transportation of the equipment to the company's facility will also be the responsibility of the purchaser. This warranty will be effective only if CRE receives written notice of the equipments defect or failure to perform within thirty (30) days of the expiration of the (1) one-year warranty period. This warranty does not cover and will not be effective in the event that any defect or failure to perform occurs as a result of a defect in a part accessory sold by this company but produced by another manufacturer. Such merchandise is warranted only through the manufacturer of the part or accessory. This warranty shall be void where equipment has been subject to misuse, neglect, alteration, accident, or when repaired with parts other than genuine CRE Mfg. Inc.

Concord Road Equipment's Mfg., Inc. obligations under this warranty shall be suspended during any period in which it is prevented from fulfilling its responsibilities by forces beyond our control such as lack of supplies, labor disputes, acts of God and transportation inadequacies. Damages for breach of this warranty shall be limited to replacement of the defective parts as set out herein and shall not include consequential damage for injuries to persons, property or loss of profits occasioned by such defects. No representative or other person is authorized or permitted to make any warranty or assume for this company any liability not strictly in accordance with the foregoing.

This warranty shall extend only to the original purchaser of the equipment from Concord Road Equipment Mfg., Inc.

CONCORD ROAD EQUIPMENT MFG., INC.
100 SERIES UNDER TAILGATE CHIP SPREADER

GENERAL

This 100 Series Undertailgate Gravity Feed Chip Spreader has been designed to, when properly maintained, give you years of reliable and dependable service. As with all equipment, you **MUST** familiarize yourself with the operation of this equipment **BEFORE** it is put into service. It is the responsibility of the owner of this equipment to make sure that the person or persons to be operating this equipment reads/interprets all safety, operation, maintenance instructions on the equipment and in this manual. Above all, always use good common sense when using your concord Road Equipment!

SAFETY INSTRUCTIONS:

- 1) Observe and follow all safety precautions to avoid personal injury and/or damage to the machine.
- 2) Only use this machine for its intended purpose.
- 3) Read and follow all safety, operation and maintenance instructions in this manual before using the machine.
- 4) Do not stand, sit or ride on any part of this machine.
- 5) Keep all body parts, clothing, etc., away from moving parts.
- 6) Never disconnect hydraulic lines with pressure in them or bodily injury can occur.
- 7) Make sure all drive covers, shields, guards, ect. Are in their proper location and in good working condition before using the machine.
- 8) Make sure the machine is securely mounted to the prime mover before each use.
- 9) Never attempt to remove any blockage without first turning off the hydraulic power source and disconnecting the hydraulic hoses from machine.
- 10) Fill out warranty form included with this manual.
- 11) Always use your equipment in a safe and courteous manner.

MOUNTING INSTRUCTIONS:

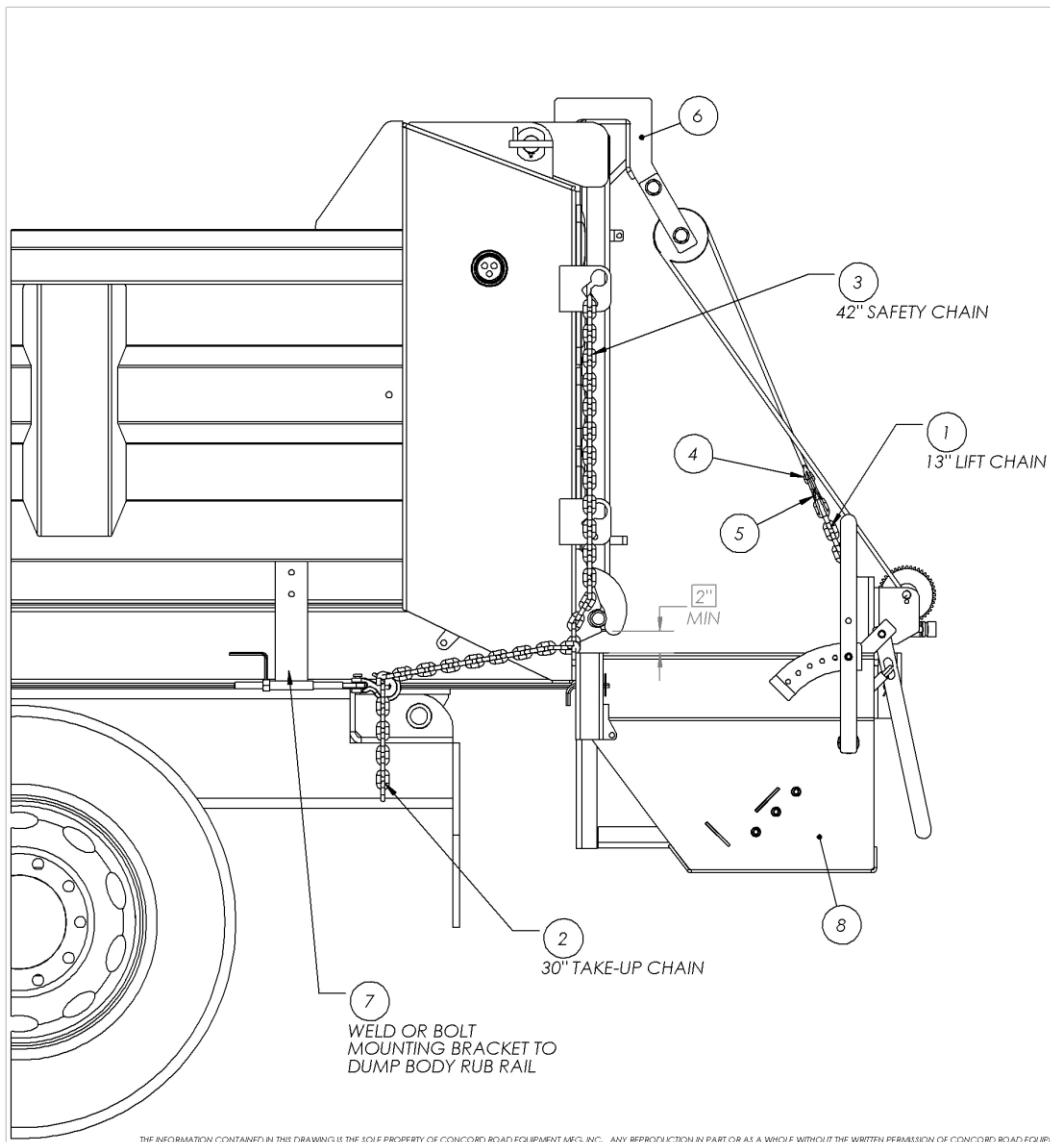
100 SERIES UNDER TAILGATE CHIP SPREADER

- 1) Check and make sure that all mounting hardware is with machine before attempting mounting procedure.
- 2) This unit has been designed to be mounted below dump body floor level so that material leaving the dump body will fill hopper of machine as required during use.
- 3) Install rub rail bracket assemblies on dump body as shown in the mounting illustration.
- 4) With rub rail bracket assemblies installed on both sides of dump body you can now proceed with mounting of the chip spreader for use.
- 5) With chip spreader sitting on a level surface, back prime mover squarely up to it being careful not to hit unit. At this point, with the parking brake applied on prime mover, raise dump body so that tailgate hooks can be installed as shown in the mounting illustration.
- 6) With tailgate hooks installed, lower dump body slowly, which in turn will lift chip spreader from the surface.
- 7) With dump body completely lowered, chip spreader can now be raised to the proper operating height by using winches to raise and lower machine as necessary, and determined by user.
- 8) In most cases, depending on the prime mover, the front frame stops of the chip spreader should be in contact with the rear frame rail of prime mover. If this is not the case, it may be necessary to install some type of frame stop on prime mover.
- 9) Level machine horizontally from left to right and vertically front to rear.
- 10) Install upper chain assemblies located on both front outside corners of machine into/through upper chain keepers of dump body.
- 11) Install lower chain assemblies located on both outside front corners of machine into rub rail bracket grab hooks that were previously installed on dump body.
- 12) Install safety chain located on tailgate hook on short chains located on the rear channel of machine hopper. NOTE: Under NO CIRCUMSTANCES should the entire weight load of the hopper and/or the hoppers load be carried at any time by the winch/cable assemblies. The winch/cable assemblies are ONLY for raising and leveling of hopper when initially installing the chip spreader.
- 13) Although in most cases this mounting procedure should suffice, in some instances it may be necessary to alter the method of installation. Concord Road Equipment Mfg., Inc. in no uncertain terms will be held liable for any/all changes made outside of what has been listed previously. If more is needed, please contact your dealer and/or Concord Road Equipment at 1-800-942-7623.

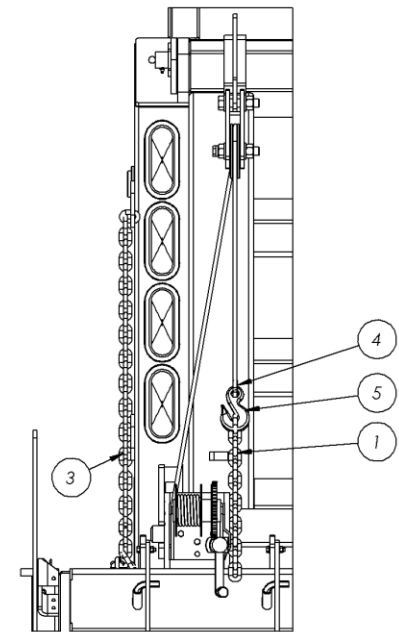
OPERATION AND MAINTANCE INSTRUCTIONS:

100 SERIES UNDER TAILGATE CHIP SPREADER

1. Never overfill hopper of chip spreader. Always discharge material from prime mover dump body to material hopper as required.
2. Open and close sliding discharge gates to obtain desired spread width.
3. Sliding discharge gates should be opened as wide as needed for the type of aggregate material being used.
4. Since this is a gravity feed type chip box, the material depth being spread to the surface is controlled by:
 - a. Main sliding floor adjustable width opening
 - b. Prime mover forward motion
5. To start material flow form material hopper, open the main sliding floor to the desired width through the use of the adjustable sliding floor handles located at either end of the chip spreader. Handles can be pinned at different increments located on sliding floor quadrant.
6. To stop material flow, close main sliding floor at any time by pulling back on sliding floor handles.
7. Varying spread widths can be adjusted by opening/closing sliding discharge gates as required during operation. Never stand directly behind machine and prime mover when it is backing in the reverse direction.
8. Machine should be thoroughly cleaned and washed after each and every use.
9. All fasteners should be checked for proper tightness every 100 hours of use.
10. All cables, pulleys, and winches should be maintained and repaired or replaced if worn, frayed, or otherwise not in good working order.
11. Entire machine should be sprayed with an anti-corrosive lubrication when put into storage for long periods of time.
12. Sliding discharge gate tension can be adjusted by tightening U-bolt clamps located over sliding discharge gate tubes in material hopper.
13. Sliding discharge gate tubes should periodically be lubricated with a light weight oil for smooth operation.
14. Sliding main floor guides should also be periodically lubricated with a light weight oil for smooth operation.
15. **ALWAYS** use genuine Concord Road Equipment Mfg., Inc. parts.
16. As with all equipment, the operator should always use commonsense when operating any equipment.



ITEM NO.	PART NUMBER	Description	QTY.
1	38-326D-14	38-326D 3/8" CHAIN - 14" LONG	2
2	38-326D-30	38-326D 3/8" CHAIN, 30" LONG	2
3	38-326D-42	38-326D 3/8" CHAIN, 42" LONG	2
4	741406	CABLE THIMBLE LOOP	2
5	B24081	3/8" GRAB HOOK	2
6	C001-00454	ASSEMBLY, PULLEY W/ HOOK	2
7	C001-00455	ASSEMBLY, TAKE-UP	2
8	C001-07081	ASSEMBLY, CHIP SPREADER, 108" - CRE-108CS	1



CONCORD ROAD EQUIPMENT MFG. INC.

348 CHESTER ST. PAINESVILLE, OH 44077
PH: 440-357-5344 FAX: 440-357-1942

TITLE: CRE-108CS - MOUNTING / INSTALLATION

PART NO. CRE-108CS

SCALE: 1:24

DRAWN BY: MICHAEL DAVIS

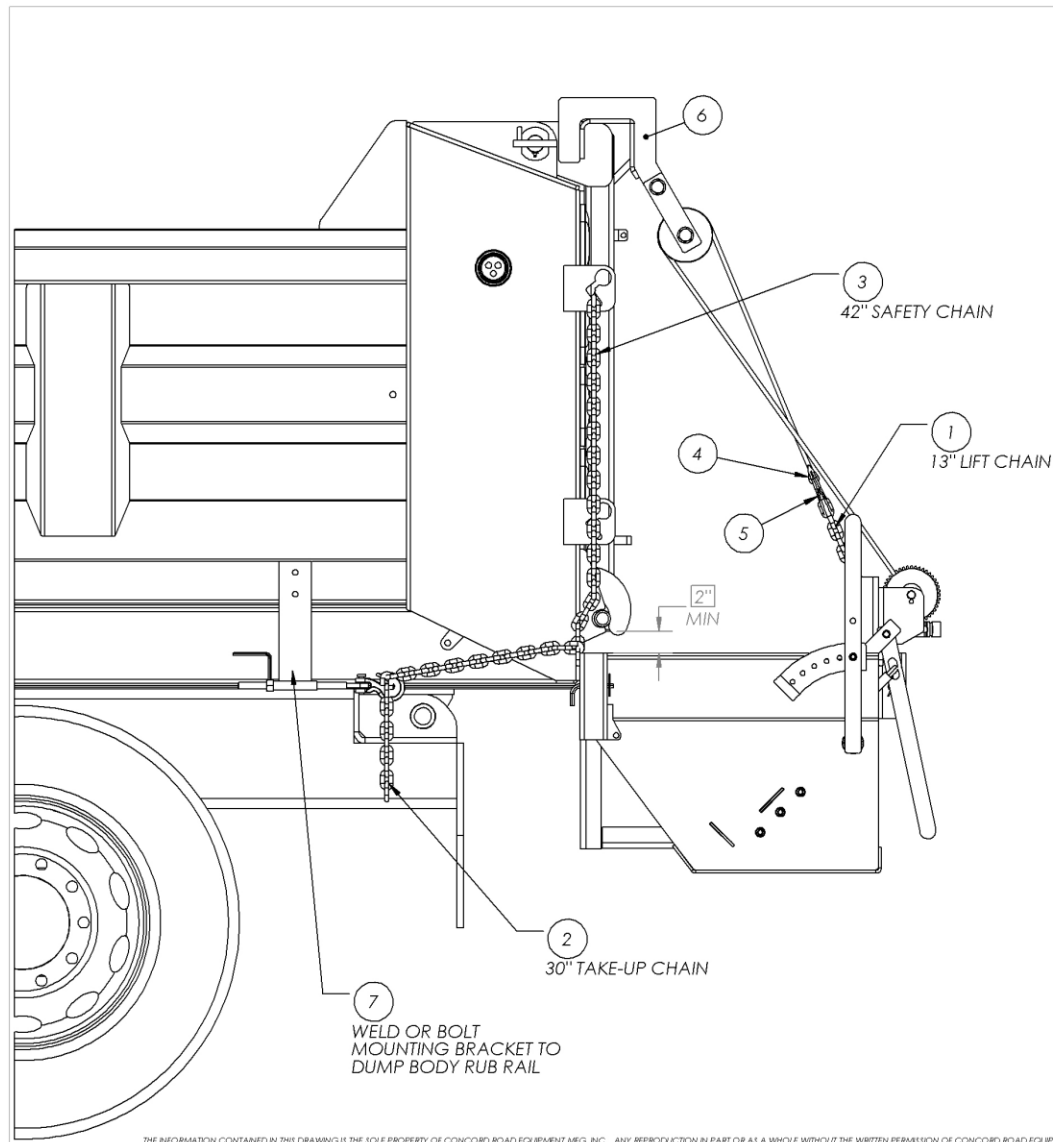
DATE: Thursday, December 15, 2016

CHECKED BY:

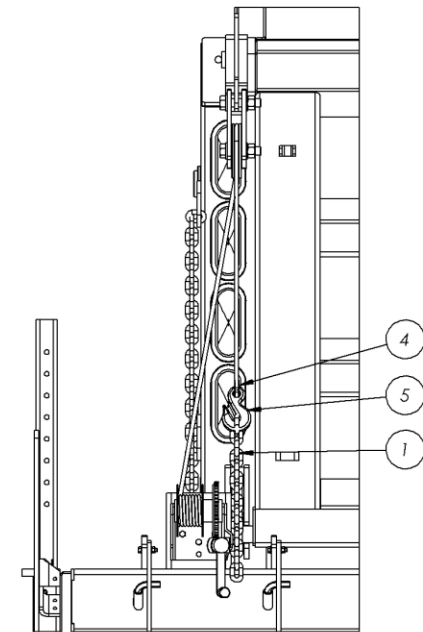
DATE:

THE INFORMATION CONTAINED IN THIS DRAWING IS THE SOLE PROPERTY OF CONCORD ROAD EQUIPMENT MFG. INC.. ANY REPRODUCTION IN PART OR AS A WHOLE WITHOUT THE WRITTEN PERMISSION OF CONCORD ROAD EQUIPMENT MFG. INC. IS PROHIBITED.

100 SERIES UNDER TAILGATE STRAIGHT DROP SPREADERS



ITEM NO.	PART NUMBER	Description	QTY.
1	38-326D-14	38-326D 3/8" CHAIN - 14" LONG	2
2	38-326D-30	38-326D 3/8" CHAIN, 30" LONG	1
3	38-326D-42	38-326D 3/8" CHAIN, 42" LONG	2
4	741406	CABLE THIMBLE LOOP	2
5	B24081	3/8" GRAB HOOK	2
6	C001-00454	ASSEMBLY, PULLEY W/ HOOK	2
7	C001-00455	ASSEMBLY, TAKE-UP	2
8	C001-07096	ASSEMBLY, CHIP SPREADER, 108" - CRE-108CS	1



CONCORD ROAD EQUIPMENT MFG. INC.

348 CHESTER ST. PAINESVILLE, OH 44077
PH: 440-357-5344 FAX: 440-357-1942

TITLE: CRE-120CS - MOUNTING / INSTALLATION

PART NO. CRE-120CS

SCALE: 1:24

DRAWN BY: MICHAEL DAVIS

DATE: Thursday, December 15, 2016

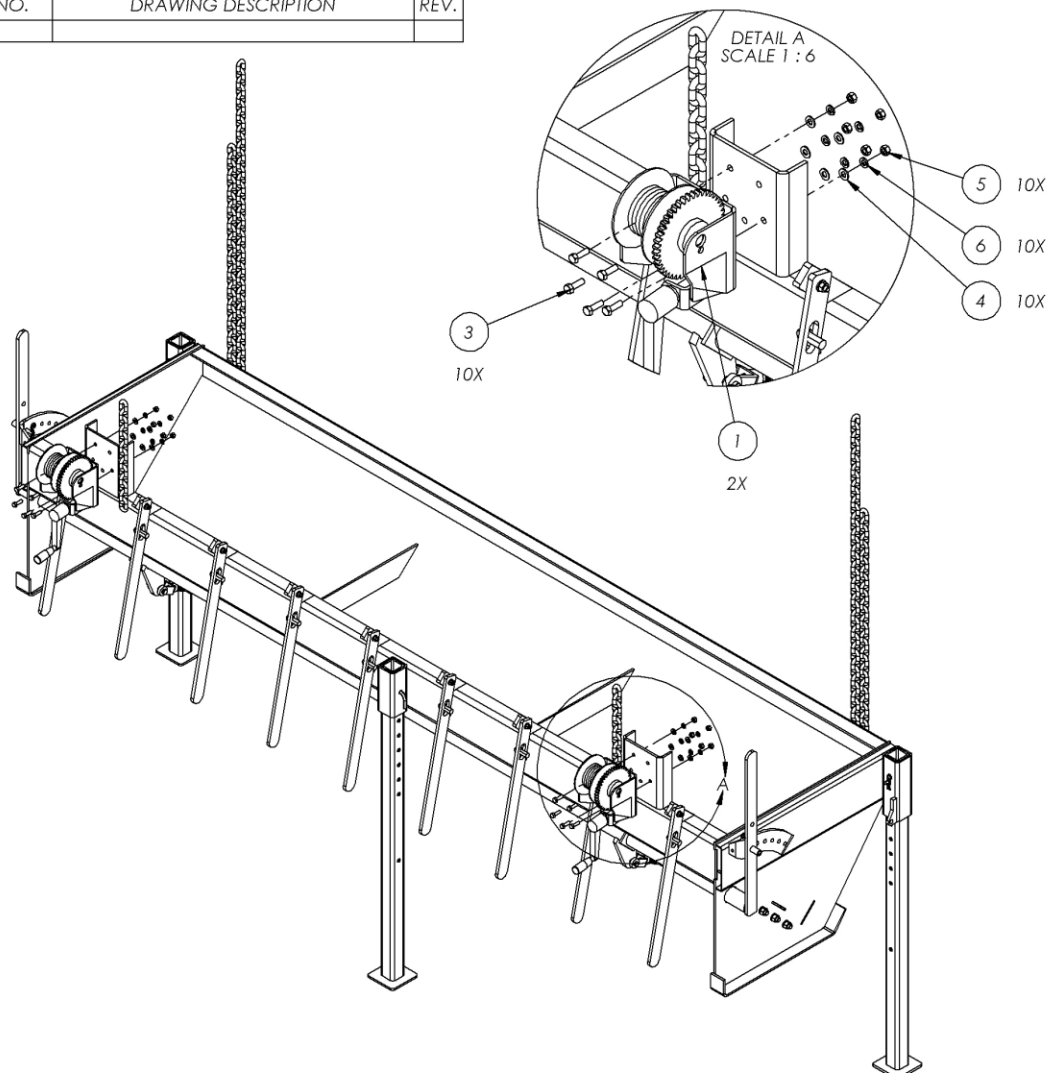
CHECKED BY:

DATE:

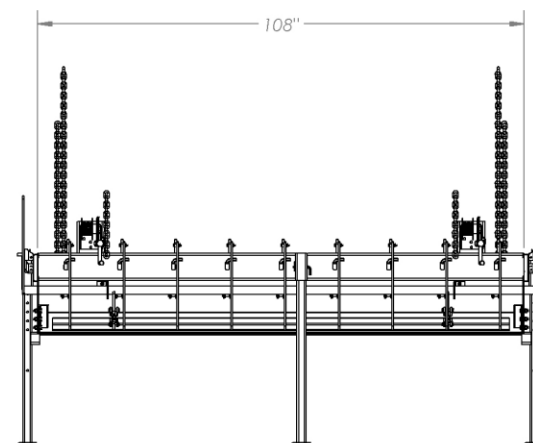
THE INFORMATION CONTAINED IN THIS DRAWING IS THE SOLE PROPERTY OF CONCORD ROAD EQUIPMENT MFG. INC. ANY REPRODUCTION IN PART OR AS A WHOLE WITHOUT THE WRITTEN PERMISSION OF CONCORD ROAD EQUIPMENT MFG. INC. IS PROHIBITED.

100 SERIES UNDER TAILGATE CHIP SPREADERS

REFERENCE DRAWINGS		
DRAWING NO.	DRAWING DESCRIPTION	REV.



ITEM NO.	PART NUMBER	Description	QTY.
1	53513-24	WINCH WITH HANDLE	2
2	C001-07082	WELDMENT, 108" CHIP SPREADER W/ WINCH BRACKET	1
3	CSC5-5161	HEX BOLT, 5/16in - 18 x 1 LONG, GRADE 5	10
4	FWSAE-516	5/16SAE WASHER, STEEL	10
5	HNC5-516	HEX NUT, 5/16-24	10
6	SLW-516	5/16 SPLIT LOCK WASHER, STEEL	10

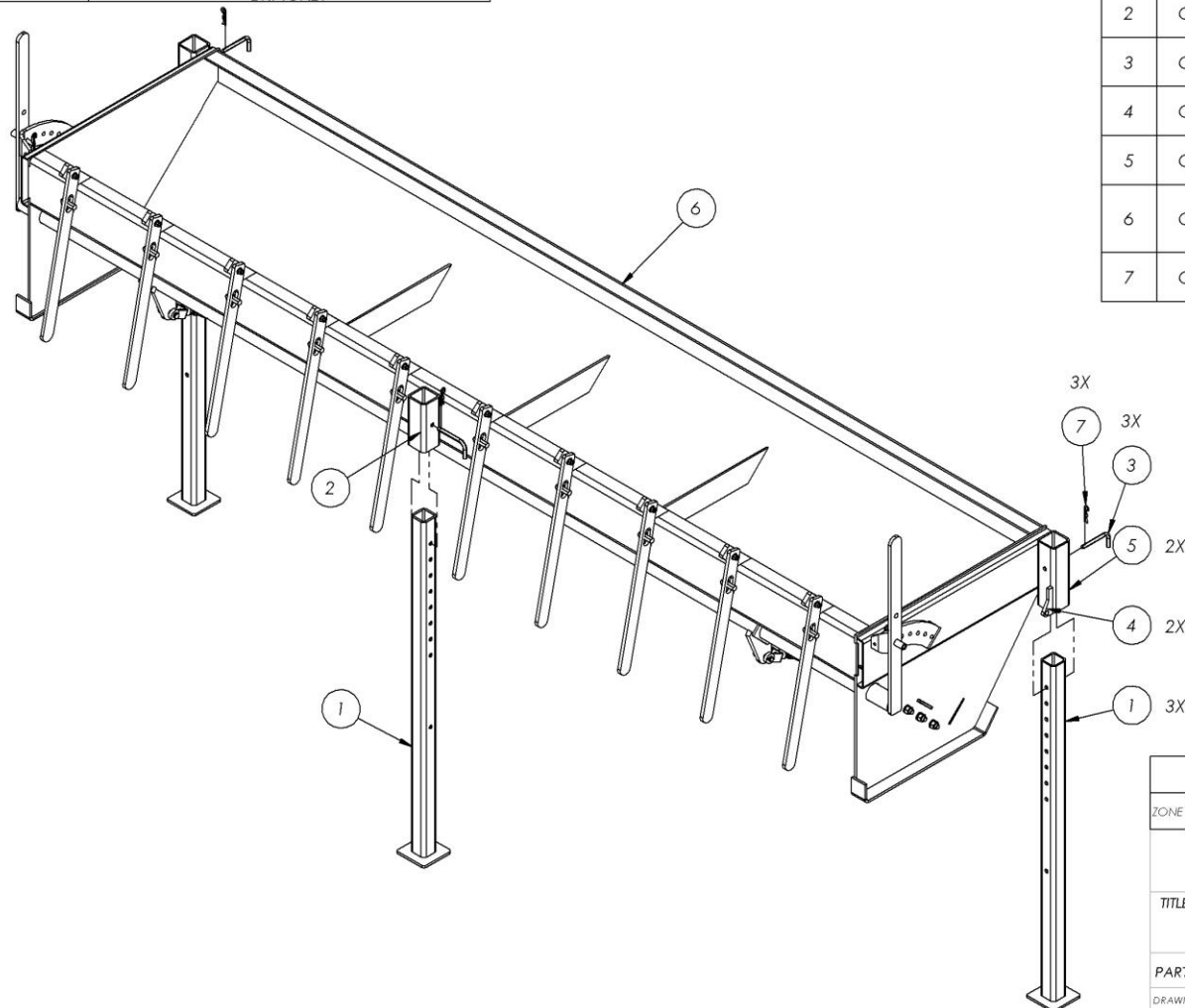


REVISIONS				
ZONE	REV.	DESCRIPTION	DATE	APPROVED
CONCORD ROAD EQUIPMENT MFG. INC.				
348 CHESTER ST. PAINESVILLE, OH 44077				
PH: 440-357-5344 FAX: 440-357-1942				
TITLE:		ASSEMBLY, CHIP SPREADER, 108" - CRE-108CS		
PART NO.		C001-07081	SCALE: 1:24	
DRAWN BY:		MICHAEL DAVIS	DATE: Friday, December 16, 2016	
CHECKED BY:			DATE:	

THE INFORMATION CONTAINED IN THIS DRAWING IS THE SOLE PROPERTY OF CONCORD ROAD EQUIPMENT MFG. INC.. ANY REPRODUCTION IN PART OR AS A WHOLE WITHOUT THE WRITTEN PERMISSION OF CONCORD ROAD EQUIPMENT MFG. INC. IS PROHIBITED.

100 SERIES UNDER TAILGATE STRAIGHT DROP SPREADERS

DRAWING NO.	REFERENCE DRAWINGS
C001-00279	WELDMENT, 120" CHIP SPREADER W/ WINCH BRACKET
C001-07097	WELDMENT, 120" CHIP SPREADER w/ WINCH BRACKET



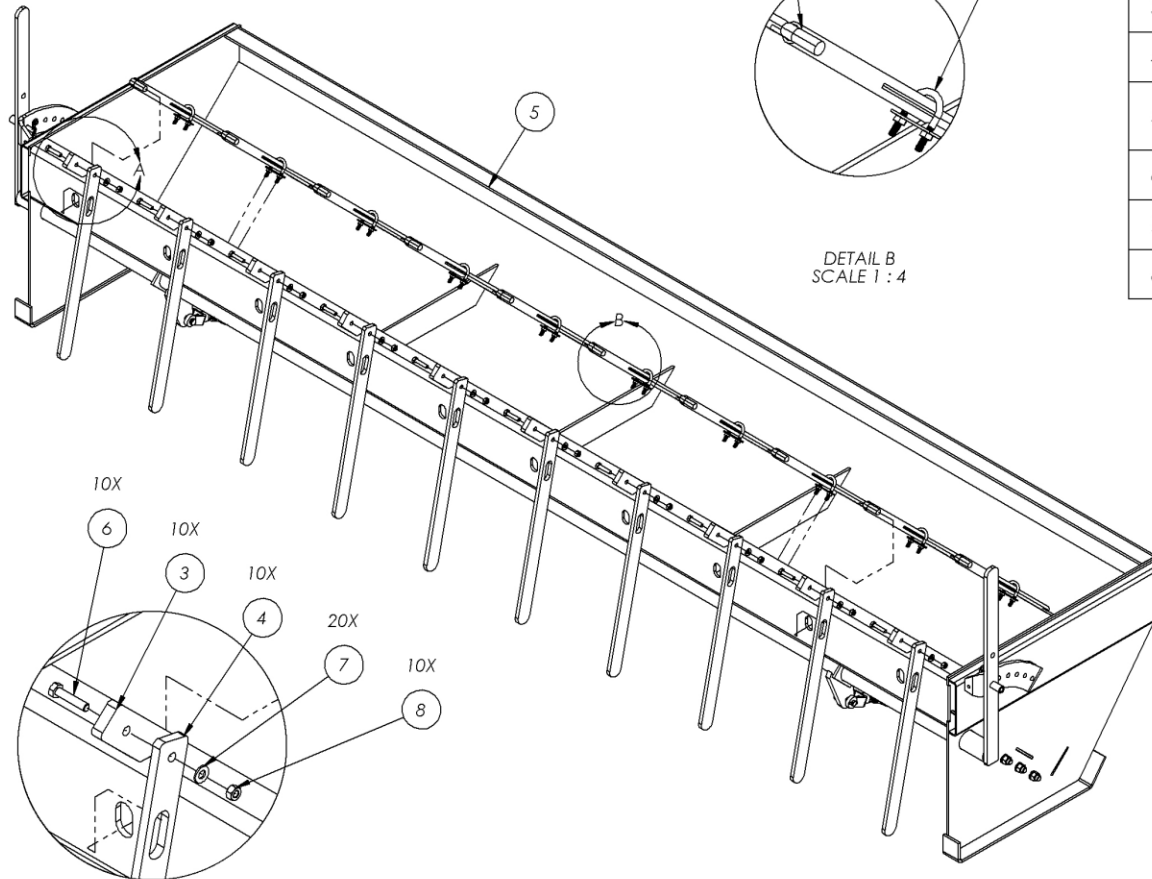
ITEM NO.	PART NUMBER	Description	QTY.
1	C001-00218	WELDMENT, LEG, CHIP SPREADER	3
2	C001-00240	RECEIVER TUBE, SHORT	1
3	C001-00241	ADJUSTMENT PIN, LEG, CHIP SPREADER	3
4	C001-00307	MOUNTING BRACKET, AIR CYLINDER, CHIP SPREADER	2
5	C001-00308	RECEIVER TUBE, LONG	2
6	C001-07099	WELDMENT, SHUT-OFF GATES, 108" CHIP SPREADER	1
7	C060-00208	HAIRPIN - FITS 1/2" TO 3/4" PIN DIAM, 2" LENGTH, 316 S.S.	3

REVISIONS				
ZONE	REV.	DESCRIPTION	DATE	APPROVED
CONCORD ROAD EQUIPMENT MFG. INC.				
348 CHESTER ST. PAINESVILLE, OH 44077				
PH: 440-357-5344 FAX: 440-357-1942				
TITLE: WELDMENT, LEGS, 120" CHIP SPREADER				
SHEET 1 OF 2				
PART NO. C001-07098		SCALE: 1:24		
DRAWN BY: MICHAEL DAVIS		DATE: Friday, December 16, 2016		
CHECKED BY:		DATE:		

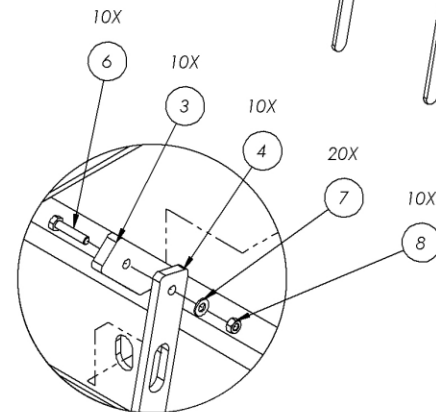
THE INFORMATION CONTAINED IN THIS DRAWING IS THE SOLE PROPERTY OF CONCORD ROAD EQUIPMENT MFG. INC.. ANY REPRODUCTION IN PART OR AS A WHOLE WITHOUT THE WRITTEN PERMISSION OF CONCORD ROAD EQUIPMENT MFG. INC. IS PROHIBITED.

100 SERIES UNDER TAILGATE CHIP SPREADERS

REFERENCE DRAWINGS		
DRAWING NO.	DRAWING DESCRIPTION	REV.
C001-00385	INSTALLATION, LEGS, 120" CHIP SPREADER	
C001-07098	WELDMENT, LEGS, 120" CHIP SPREADER	



ITEM NO.	PART NUMBER	Description	QTY.
1	3043T56	1/4" U-BOLT	10
2	C001-00215	WELDMENT, SHUT-OFF GATE	10
3	C001-00229	PIVOT BRACKET	10
4	C001-00230	PIVOT HANDLE	10
5	C001-07100	WELDMENT, MAIN DOOR & LINKAGE, 120" CHIP SPREADER	1
6	CSC5-516112	HEX BOLT, 5/16in - 18 x 1-1/2 LONG, GRADE 5	10
7	FWSAE-516	5/16SAE WASHER, STEEL	20
8	NNCS-516	NYLOCK HEX NUT, 5/16-18	10



DETAIL A
SCALE 1 : 4

DETAIL B
SCALE 1 : 4

REVISIONS				
ZONE	REV.	DESCRIPTION	DATE	APPROVED
<div>CONCORD ROAD EQUIPMENT MFG. INC.</div> <div>348 CHESTER ST. PAINESVILLE, OH 44077</div> <div>PH: 440-357-5344 FAX: 440-357-1942</div>				
TITLE:		WELDMENT, SHUT-OFF GATES, 120" CHIP SPREADER		
SHEET 1 OF 2				
PART NO.		C001-07099		SCALE: 1:24
DRAWN BY:		MICHAEL DAVIS		DATE: Friday, December 16, 2016
CHECKED				DATE:

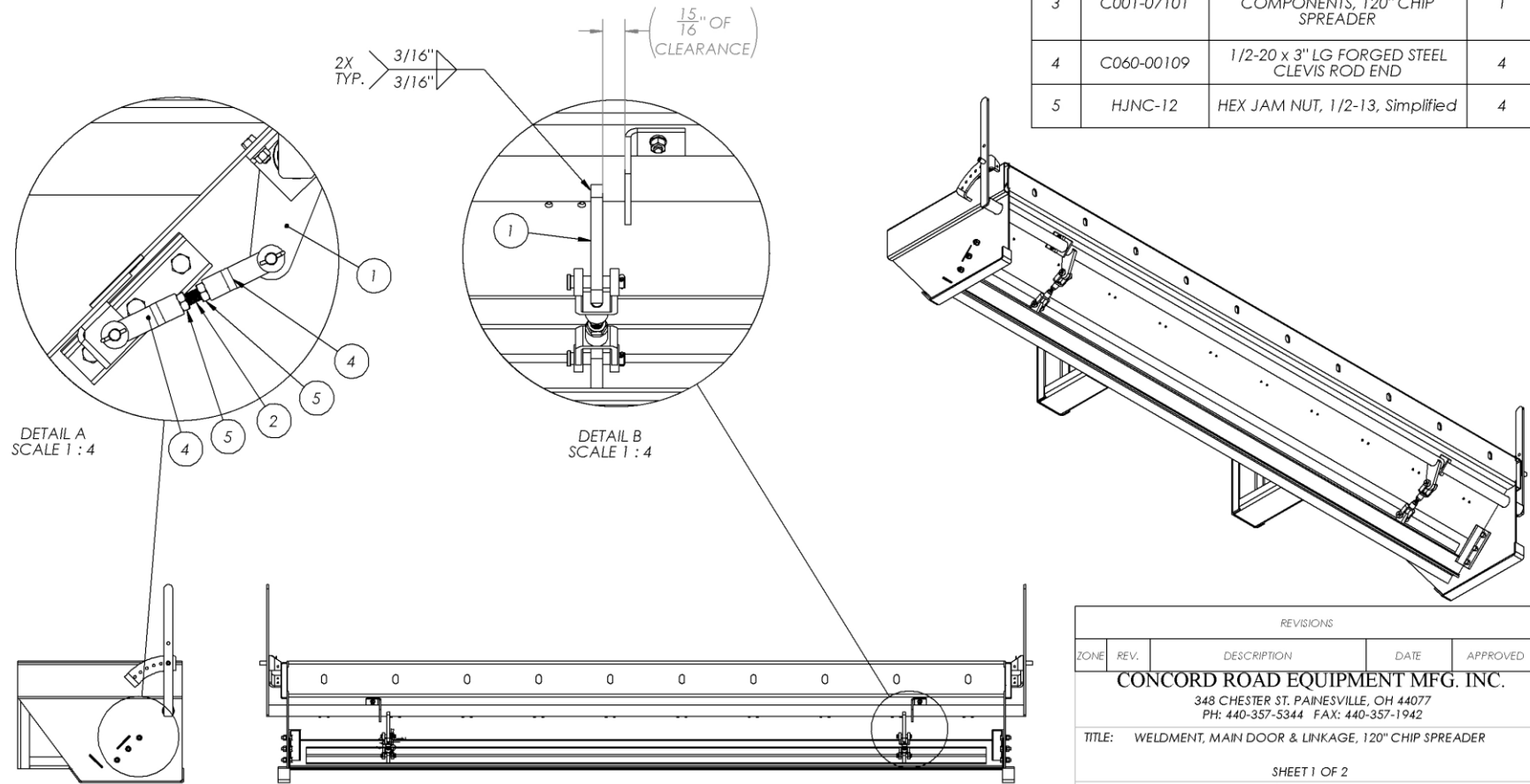
THE INFORMATION CONTAINED IN THIS DRAWING IS THE SOLE PROPERTY OF CONCORD ROAD EQUIPMENT MFG. INC.. ANY REPRODUCTION IN PART OR AS A WHOLE WITHOUT THE WRITTEN PERMISSION OF CONCORD ROAD EQUIPMENT MFG. INC. IS PROHIBITED.

100 SERIES UNDER TAILGATE STRAIGHT DROP SPREADERS

REFERENCE DRAWINGS		
DRAWING NO.	DRAWING DESCRIPTION	REV.
C001-00384	INSTALLATION, SHUT-OFF GATES, 108"	
C001-07099	WELDMENT, SHUT-OFF GATES, 120" CHIP SPREADER	

**ALL VIEWS ARE OF THE UNITS'
MAIN DOOR IN THE CLOSED
POSITION**

ITEM NO.	PART NUMBER	Description	QTY.
1	C001-00238	PIVOT ARM, MAIN DOOR LINKAGE	2
2	C001-00270	THREADED ROD, MAIN LINKAGE DOOR - 1/2-13 x 3-1/2"	2
3	C001-07101	WELDMENT, MAIN DOOR COMPONENTS, 120" CHIP SPREADER	1
4	C060-00109	1/2-20 x 3" LG FORGED STEEL CLEVIS ROD END	4
5	HJNC-12	HEX JAM NUT, 1/2-13, Simplified	4

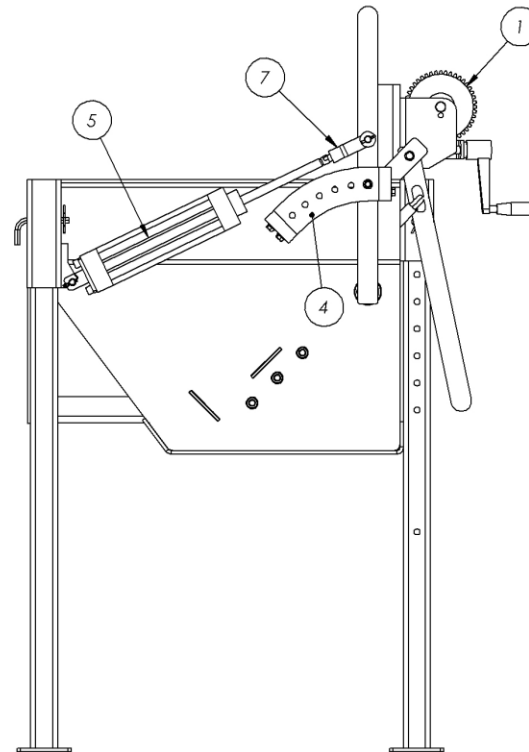
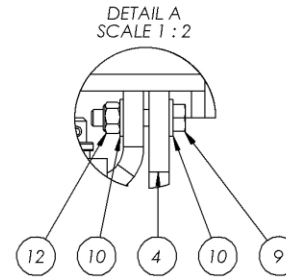
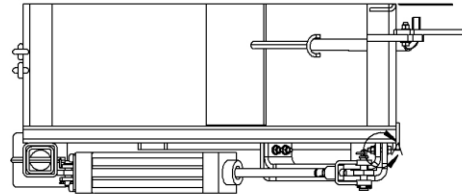


REVISIONS				
ZONE	REV.	DESCRIPTION	DATE	APPROVED
CONCORD ROAD EQUIPMENT MFG. INC.				
348 CHESTER ST. PAINESVILLE, OH 44077				
PH: 440-357-5344 FAX: 440-357-1942				
TITLE: WELDMENT, MAIN DOOR & LINKAGE, 120" CHIP SPREADER				
SHEET 1 OF 2				
PART NO. C001-07100		SCALE: 1:16		
DRAWN BY: MICHAEL DAVIS		DATE: Friday, December 16, 2016		
CHECKED BY:		DATE:		

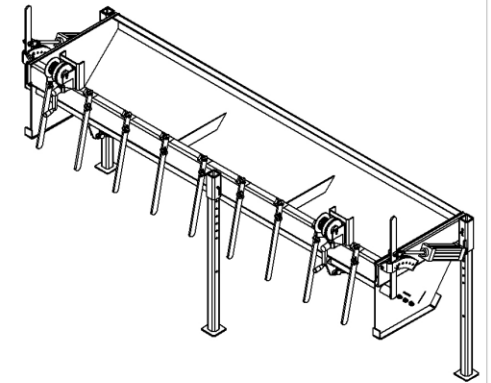
THE INFORMATION CONTAINED IN THIS DRAWING IS THE SOLE PROPERTY OF CONCORD ROAD EQUIPMENT MFG. INC.. ANY REPRODUCTION IN PART OR AS A WHOLE WITHOUT THE WRITTEN PERMISSION OF CONCORD ROAD EQUIPMENT MFG. INC. IS PROHIBITED.

100 SERIES UNDER TAILGATE CHIP SPREADERS

REFERENCE DRAWINGS		
DRAWING NO.	DRAWING DESCRIPTION	REV.



ITEM NO.	PART NUMBER	Description	QTY.
1	53513-24	WINCH WITH HANDLE	2
2	C001-07082	WELDMENT, 108" CHIP SPREADER W/ WINCH BRACKET	1
3	C001-07089	GUIDE BRACE, CURBSIDE - MAIN GATE AIR CYLINDER	1
4	C001-07090	GUIDE BRACE, STREETSIDE - MAIN GATE AIR CYLINDER	1
5	C020-00008	TGC25008VK TAILGATE CYL W/ MANUAL AIR VALVE	2
6	C020-00008A	AIR CYLINDER SHAFT	2
7	C060-00109	1/2-20 x 3" LG FORGED STEEL CLEVIS ROD END	2
8	CSC5-5161	HEX BOLT, 5/16in - 18 x 1 LONG, GRADE 5	10
9	CSC5-516112	HEX BOLT, 5/16in - 18 x 1-1/2 LONG, GRADE 5	6
10	FWSAE-516	5/16SAE WASHER, STEEL	22
11	HNC5-516	HEX NUT, 5/16-24	10
12	NNCS-516	NYLOCK HEX NUT, 5/16-18	6
13	SLW-516	5/16 SPLIT LOCK WASHER, STEEL	10



REVISIONS				
ZONE	REV.	DESCRIPTION	DATE	APPROVED
CONCORD ROAD EQUIPMENT MFG. INC. 348 CHESTER ST. PAINESVILLE, OH 44077 PH: 440-357-5344 FAX: 440-357-1942				
TITLE: OPTIONAL PARTS FOR CHIP SPREADER, CRE-100 SERIES AIR OPERATED MAIN DOOR WITH ELECTRIC PENDANT				
PART NO. CRE-108AOD			SCALE: 1:24	
DRAWN BY: MICHAEL DAVIS			DATE:	Friday, December 10, 2016
CHECKED:			DATE:	

THE INFORMATION CONTAINED IN THIS DRAWING IS THE SOLE PROPERTY OF CONCORD ROAD EQUIPMENT MFG. INC.. ANY REPRODUCTION IN PART OR AS A WHOLE WITHOUT THE WRITTEN PERMISSION OF CONCORD ROAD EQUIPMENT MFG. INC. IS PROHIBITED.