

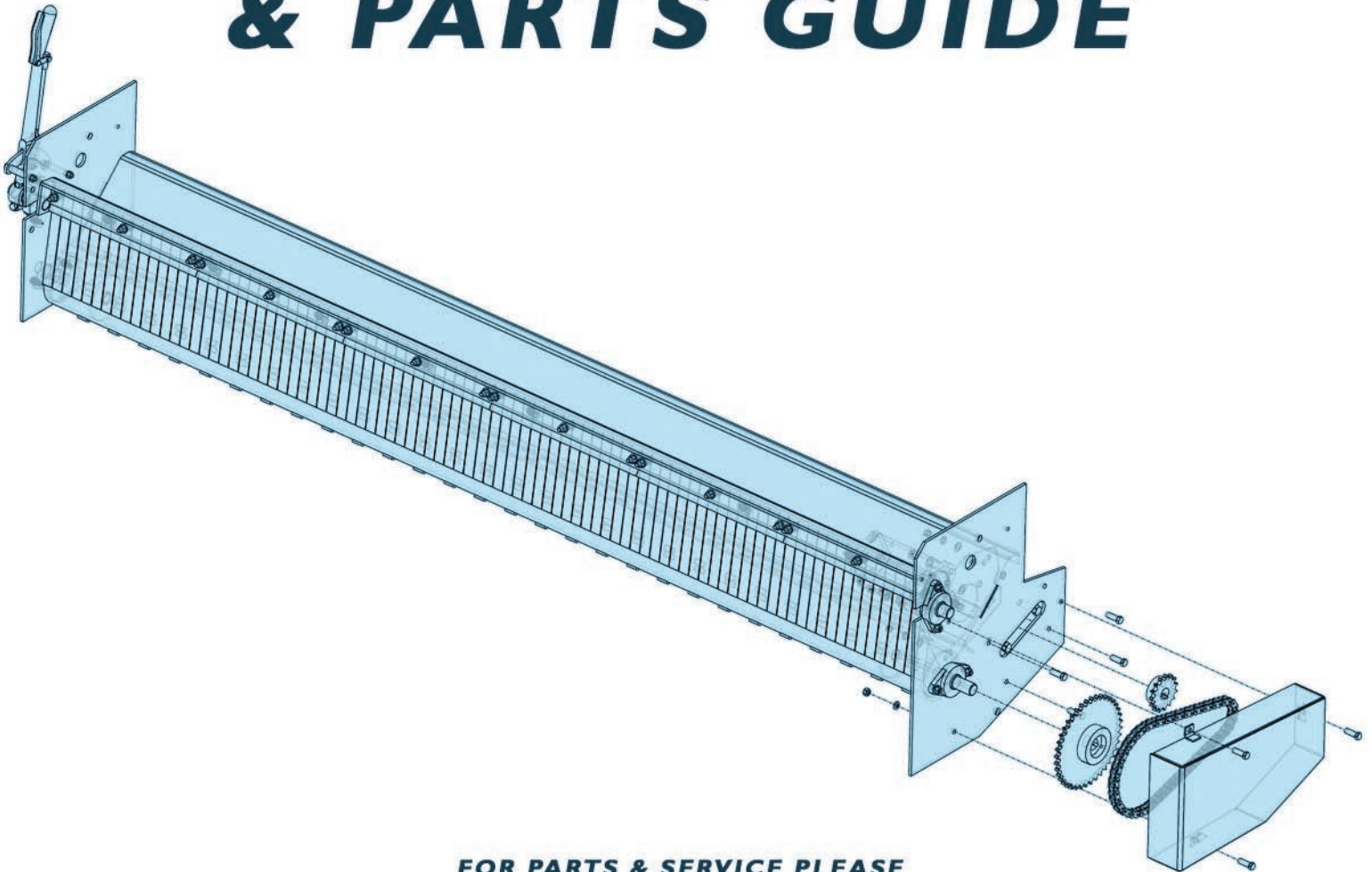
# CONCORD

**ROAD EQUIPMENT, INC.**

## CRE-195

**SERIES STRAIGHT DROP SPREADER**

# **OPERATION MANUAL & PARTS GUIDE**



**FOR PARTS & SERVICE PLEASE  
CONTACT YOUR AUTHORIZED  
CONCORD DEALER**

**CONCORD ROAD EQUIPMENT, MFG  
348 CHESTER STREET  
PAINESVILLE, OHIO 44119**

**1-800-942 ROAD (7623)  
1-440-357-5344**

# **2016**

## TABLE OF CONTENTS

Warranty Registration Form .....	2
Warranty .....	3
Safety Instructions .....	4
Mounting instructions .....	5-6, 8-10
Operation & Maintenance Instructions .....	7
Under Tailgate Straight Drop Spreader Parts List – (Spring Finger CRE-195SF) .....	11-15
Motor Side .....	12
Handle Side .....	13
Auger / Spring Finger .....	14
Option: Dump Over Cover .....	15
Under Tailgate Straight Drop Spreader Parts List – (Solid Back CRE-195SB) .....	16-19
Drive Components .....	17
Idler End .....	18
Hardware & Roller .....	19

## Warranty Registration Record

Please complete the  
Warranty Registration Form for your records.

Model Purchased: \_\_\_\_\_ Serial # \_\_\_\_\_

In Service Date: \_\_\_\_\_

Owners Complete Mailing Address:

---

---

---

---

---

Telephone #: \_\_\_\_\_

Fax #: \_\_\_\_\_

I have read, understand, and will apply the  
contents of the Concord warranty, safety,  
operation and maintenance manual.

---

Owners Signature

---

Owners Name Printed

**CONCORD ROAD EQUIPMENT MFG., INC.**  
**PAINESVILLE, OHIO**

**WARRANTY**

Concord Road Equipment Mfg., Inc. warrants all new CRE products manufactured by this company according to the terms as set forth below, BUT EXCLUDES ANY IMPLIED WARRANTY OF MERCHANTABILITY and there are no warranties which extend beyond the description of the face of this warranty.

Should any Concord Road Equipment product prove defective in material or workmanship, under normal service and use, within a period of one year from date of shipping to the original purchaser, CRE shall repair or replace if the following conditions have been met: the equipment was properly set up, adjusted, used and operated by a trained person. Which on inspection by CRE appears to have been defective in workmanship or material, but the cost of labor in replacement of these parts will be paid by the purchaser and transportation of the equipment to the company's facility will also be the responsibility of the purchaser. This warranty will be effective only if CRE receives written notice of the equipments defect or failure to perform within thirty (30) days of the expiration of the (1) one year warranty period. This warranty does not cover and will not be effective in the event that any defect or failure to perform occurs as a result of a defect in a part accessory sold by this company but produced by another manufacturer. Such merchandise is warranted only through the manufacturer of the part or accessory. This warranty shall be void where equipment has been subject to misuse, neglect, alteration, accident, or when repaired with parts other than genuine CRE Mfg. Inc.

Concord Road Equipment's Mfg., Inc. obligations under this warranty shall be suspended during any period in which it is prevented from fulfilling its responsibilities by forces beyond our control such as lack of supplies, labor disputes, acts of God and transportation inadequacies. Damages for breach of this warranty shall be limited to replacement of the defective parts as set out herein and shall not include consequential damage for injuries to persons, property or loss of profits occasioned by such defects. No representative or other person is authorized or permitted to make any warranty or assume for this company any liability not strictly in accordance with the foregoing.

This warranty shall extend only to the original purchaser of the equipment from Concord Road Equipment Mfg., Inc.

**CONCORD ROAD EQUIPMENT MFG., INC.**  
**195 SERIES UNDER TAILGATE STRAIGHT DROP SPREADER**

**GENERAL**

The 195 series under tailgate “Straight Drop Spreader” has been designed, when properly maintained, to give you years of reliable and dependable service. As with all equipment, you must first familiarize yourself with the operation of the equipment before it is put into service. It is the responsibility of the owner of the equipment to make sure that the person or persons to be operating the equipment read and understand all safety, operations, and maintenance instructions on the equipment and in this manual before using it. Above all, always use good common sense when using your machine.

**SAFETY INSTRUCTIONS:**

- 1) Observe and follow all safety precautions to avoid personal injury and/or damage to the machine.
- 2) Only use this machine for its intended purpose.
- 3) Read and follow all safety, operation and maintenance instructions in this manual before using the machine.
- 4) Do not stand, sit or ride on any part of this machine.
- 5) Keep all body parts, clothing, etc., away from moving parts.
- 6) Never disconnect hydraulic lines with pressure in them or bodily injury can occur.
- 7) Make sure all drive covers, shields, guards, ect. Are in their proper location and in good working condition before using the machine.
- 8) Make sure the machine is securely mounted to the prime mover before each use.
- 9) Never attempt to remove any blockage without first turning off the hydraulic power source and disconnecting the hydraulic hoses from machine.
- 10) Fill out warranty form included with this manual.
- 11) Always use your equipment in a safe and courteous manner.

**MOUNTING INSTRUCTIONS:****195 SERIES UNDER TAILGATE STRAIGHT DROP SPREADERS**

- 1) Before installation of the CRE-195 series spreader, verify the following mounting parts have been included with the unit.
  - a. Weld-on side arm pocket – C001-00695 - Qty: 2
  - b. 1/2" x 2-1/2" x 16" Slide arms – C001-00694 - Qty: 2
  - c. 1/2"-13 x 3" Hex Bolts – CSC5-123 - Qty: 4
  - d. 1/2" Nylok lock nuts – NNC5-1/2 – Qty: 2
  - e. Optional: 1/2"-13 x 1-1/2" Hex Bolts – CSC5-12112 - Qty: 4
  - f. Optional: 1/2" USS Hex Nuts – HNC5-12 – Qty: 4
  - g. Optional: 1/2" Lock washers - SLW-12 – Qty: 4
  - h. Optional: Tailgate enclosures – Qty: 2
- 2) Weld side arm pockets to lower rear corner post of dump body as shown in the mounting drawing. **NOTE:** Pockets can be bolted to rear corner post of body by first welding a minimum of 1/4" plate to pockets, then bolting assembly to corner post by using a minimum of four 3/8" diameter bolts of the proper length. **NOTE:** Make sure the pockets are mounted at the same height on both sides of the dump body.
- 3) Carefully raise spreader and locate the front hopper panel so that it is just below the floor of the dump body and tight against the spreader apron of the dump body. **NOTE:** If the dump body has no spread apron, one should be installed at this time, make sure that the tailgate will swing open and pass over the spreaders' hopper.
- 4) Install slide arm into the slide arm pockets that are now attached to the dump body. Slide arms should extend past (towards front of the vehicle approximately 1/2" to 3/4").
- 5) Slide arm should be offset in the slide arm pockets as shown in the as illustrated with the leading top edge of the slide arm against the **TOP INSIDE** of the pocket, and the rear lower edge of the slide arm against the **LOWER INSIDE** of the pocket.
- 6) With the slide arms installed properly, clamp and drill 9/16" hole through the slide arm and dump body. Install two CSC5-123 bolts and two NNC5-12 Nylok nuts and tighten properly.
- 7) Spreader to Slide Arm Mounting:
  - a. **Bolt-on:**  
Transfer the two holes at the rear of each slide arm to spreader endplates and drill a hole through the slide arm. Install two CSC5-12112 bolts, two SLW-12 lock washers, & two HNC5-12 hex nuts through each arm and spreader end plates, and tighten properly.
  - b. **Weld-on:**  
Fully weld slide arms tot spreader endplates. Try to avoid welding to spreader extension plates.
- 8) If necessary, and if a gap exists between the spreader and dump body spreader apron, weld or bolt a filler plate to the spreader hopper to eliminate any gaps. By not doing so material will fall between dump body and spreader.

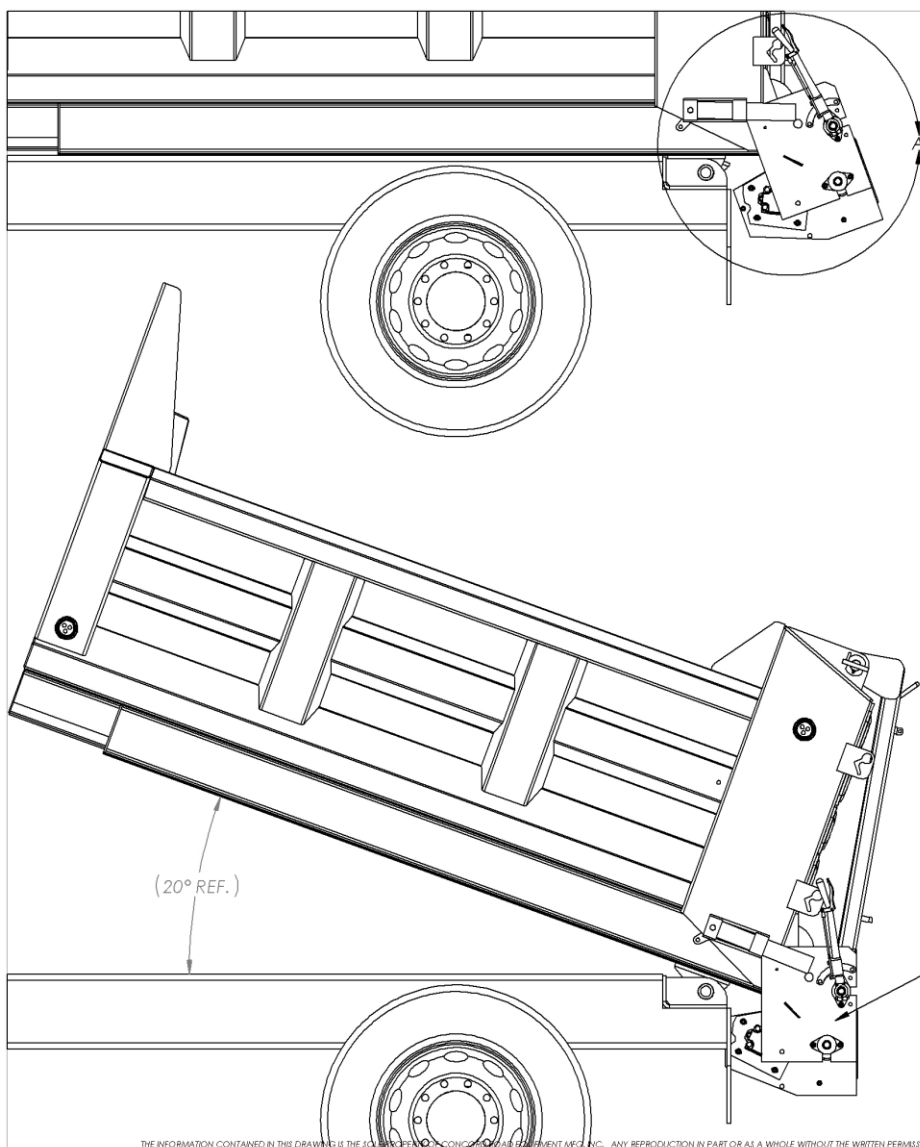
- 9) **Optional Step:** Install tailgate enclosures on inside of tailgate to eliminate spillage of material over endplates of spreader when in use.
- 10) When installation is completed, check to be sure that all fasteners are properly tightened, and all welds are strong.
- 11) Install pressure hoses (**optional**) in hydraulic motor parts, and connect to vehicles hydraulic lines coming from the in-cab spreader control valve.

## OPERATION AND MAINTANCE INSTRUCTIONS:

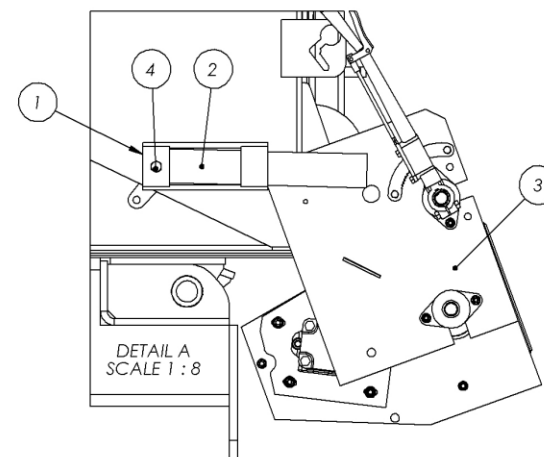
### 195 SERIES UNDER TAILGATE STRAIGHT DROP SPREADERS

- 1) Properly lift, ie; forklift, chain fall, ect., spreader into mounting position, making sure that all lighting is still visible.
- 2) Attach hydraulic hoses to proper hydraulic connections on vehicle.
- 3) Raise bed slowly and visibly inspect machine and vehicle making sure that there are no obstructions, (ie; pintle hooks, fittings, tow hooks, ground clearance, ect.), and that the machine is working freely and securely.
- 4) Tailgate **MUST** be adjusted for control of material entering into machine. Adjust tailgate chains so that the tailgate does not hit the machine.
- 5) To operate machine, adjust spreader control knob, located in vehicle cab, to the desired speed setting and turn on/off level valve to the **ON** position to spread material. When material spreading is to be stopped, turn on/off level to the **OFF** position.
- 6) Never overload material hopper or damage could occur. **ALWAYS** disperse material from vehicle to material spreader on a “as needed” basis.
- 7) To control the discharge rate and/or amount of material leaving the spreader, please see the following:
  - a. 195-SF Models – Adjust the spring finger tension against the roll assembly by moving the adjusting handle located on the driver side of the unit.
  - b. 195-SB Models. – Evenly adjust the two jam nut assemblies located on the lower rear corner of the rear hinged panel assembly.
- 8) After each use, the spreader should be thoroughly cleaned and inspected for any worn, broken, or loose parts.
- 9) All bearing assemblies are of the re-lubable type and should be greased at a minimum of every 40 hours of actual use. (General all-purpose lube can be used.)
- 10) **ALWAYS** remove hydraulic power source and/or disconnected hydraulics from spreader when maintenance procedures are being performed.
- 11) **CHECK** all fasteners frequently.
- 12) **KEEP** body parts & loose clothing free of all moving parts.

**ALWAYS WITHOUT EXCEPTION: USE YOUR CONCORD EQUIPMENT OR ANY EQUIPMENT, IN A SAFE AND CAUTIOUS MANNER.**



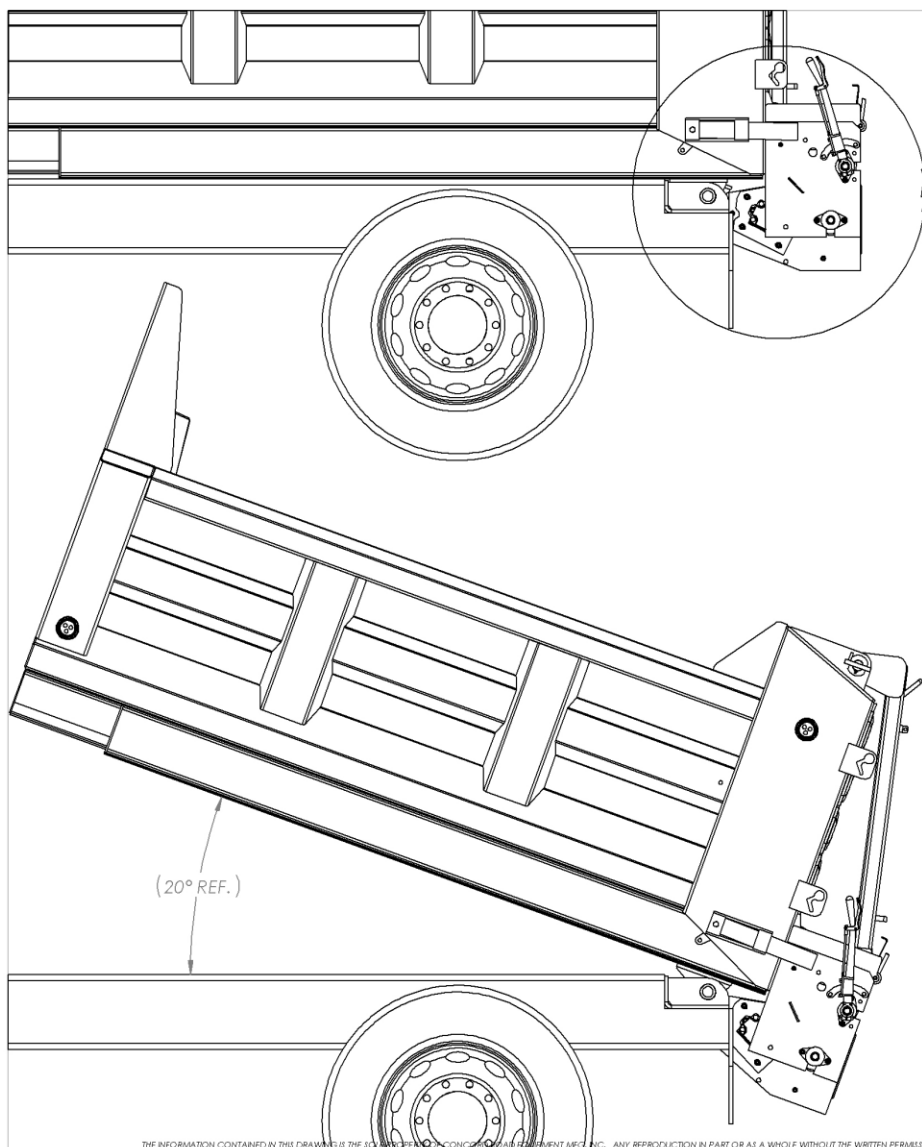
ITEM NO.	PART NUMBER	Description	QTY.
1	C001-00693	SLIDE ARM POCKET WELDMENT	2
2	C001-00694	SLIDE ARM - WELD-ON	1
3	C001-07011	ASSEMBLY, SPREADER - CRE-195 SF 96"	1
4	CSCS-123	HEX BOLT, 1/2in - 13 x 3 LONG, STAINLESS	2
5	HNCS-12	HEX NUT, 1/2-13, STAINLESS	2



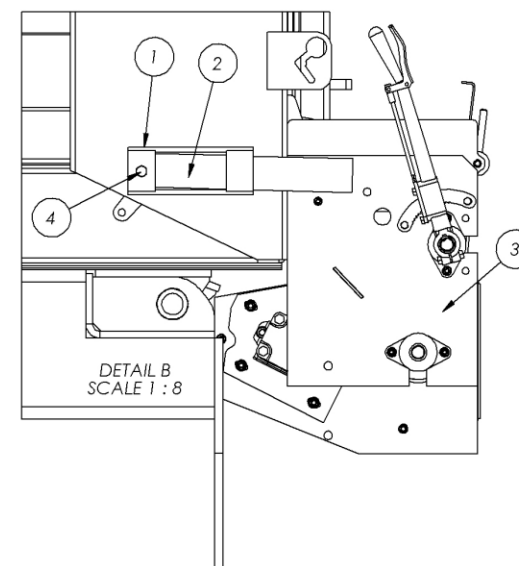
CONCORD ROAD EQUIPMENT MFG. INC.	
348 CHESTER ST. PAINESVILLE, OH 44077 PH: 440-357-5344 FAX: 440-357-1942	
TITLE:	MOUNTING ASSEMBLY, CRE-195SF-96CS
TYPICAL MOUNTING	
PART NO.	CRE-195SF-96CS
SCALE:	1:48
DRAWN BY:	MICHAEL DAVIS
CHECKED BY:	
DATE:	Thursday, November 17, 2016
DATE:	

THE INFORMATION CONTAINED IN THIS DRAWING IS THE SOLE PROPERTY OF CONCORD ROAD EQUIPMENT MFG. INC. ANY REPRODUCTION IN PART OR AS A WHOLE WITHOUT THE WRITTEN PERMISSION OF CONCORD ROAD EQUIPMENT MFG. INC. IS PROHIBITED.

# 195 SERIES UNDER TAILGATE STRAIGHT DROP SPREADERS



ITEM NO.	PART NUMBER	Description	QTY.
1	C001-00693	SLIDE ARM POCKET WELDMENT	2
2	C001-00694	SLIDE ARM - WELD-ON	1
3	C001-07011	WHAT IS IT?	1
4	CSCS-123	HEX BOLT, 1/2in - 13 x 3 LONG, STAINLESS	2
5	HNCS-12	HEX NUT, 1/2-13, STAINLESS	2



## CONCORD ROAD EQUIPMENT MFG. INC.

348 CHESTER ST. PAINESVILLE, OH 44077  
PH: 440-357-5344 FAX: 440-357-1942

TITLE: MOUNTING ASSEMBLY, CRE-195SF-96DC

TYPICAL MOUNTING - (OPTIONAL: DUMP OVER COVER)

PART NO. CRE-195SF-96DC

SCALE: 1:48

DRAWN BY: MICHAEL DAVIS

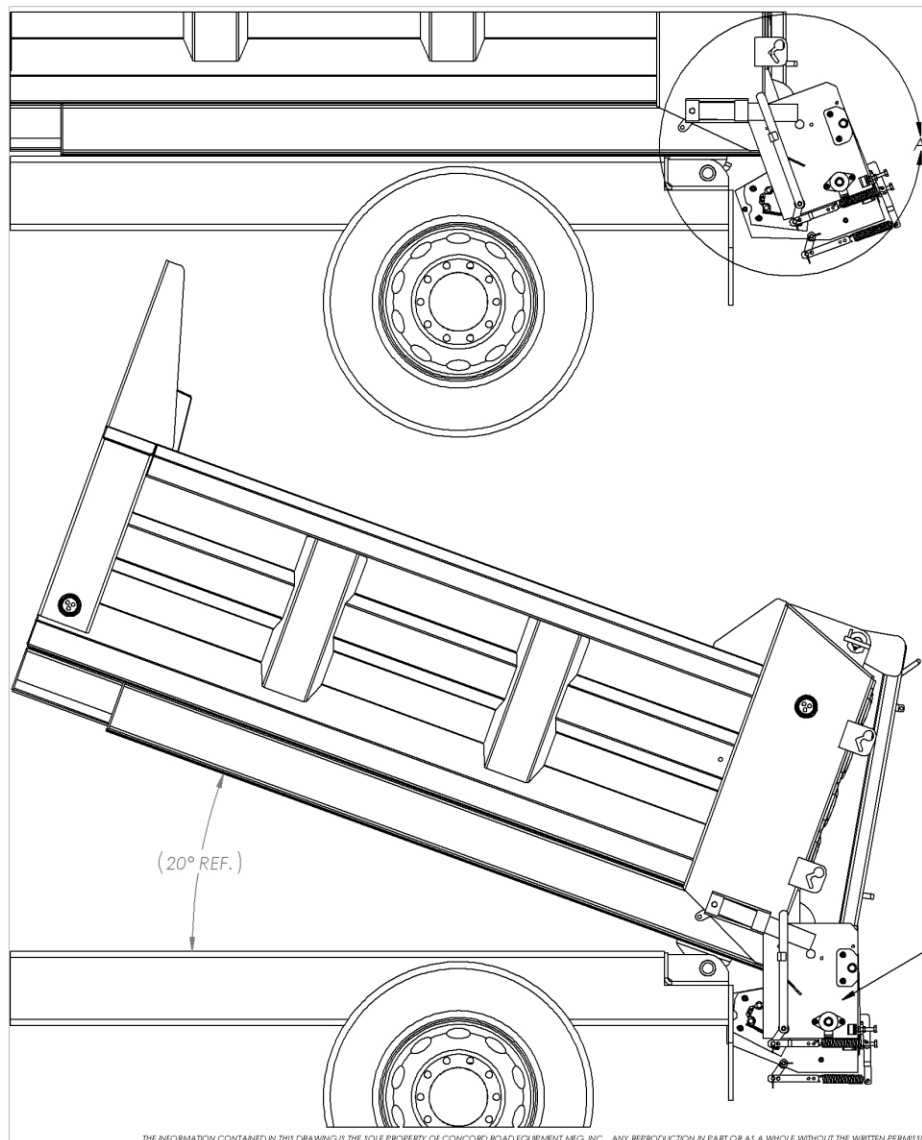
DATE: Thursday, November 17, 2016

CHECKED BY:

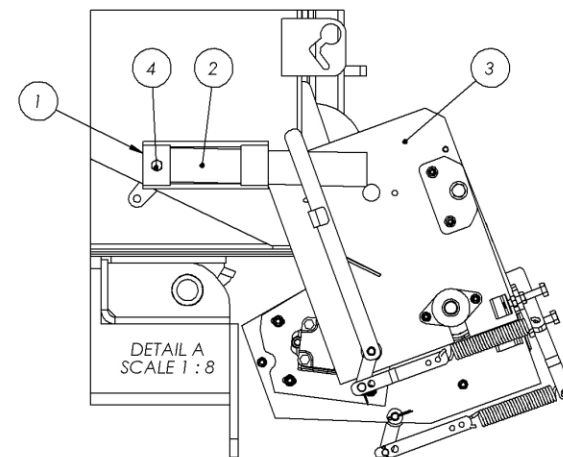
DATE:

THE INFORMATION CONTAINED IN THIS DRAWING IS THE SOLE PROPERTY OF CONCORD ROAD EQUIPMENT MFG. INC. ANY REPRODUCTION IN PART OR AS A WHOLE WITHOUT THE WRITTEN PERMISSION OF CONCORD ROAD EQUIPMENT MFG. INC. IS PROHIBITED.

# 195 SERIES UNDER TAILGATE STRAIGHT DROP SPREADERS



ITEM NO.	PART NUMBER	Description	QTY.
1	C001-00693	SLIDE ARM POCKET WELDMENT	2
2	C001-00694	SLIDE ARM - WELD-ON	1
3	C001-07104	ASSEMBLY, HOPPER	1
4	CSCS-123	HEX BOLT, 1/2in - 13 x 3 LONG, STAINLESS	2
5	HNCS-12	HEX NUT, 1/2-13, STAINLESS	2



## CONCORD ROAD EQUIPMENT MFG. INC.

348 CHESTER ST. PAINESVILLE, OH 44077  
PH: 440-357-5344 FAX: 440-357-1942

TITLE: MOUNTING ASSEMBLY, CRE-195SF-96CS

TYPICAL MOUNTING

PART NO. CRE-195SF-96CS

SCALE: 1:48

DRAWN BY: MICHAEL DAVIS

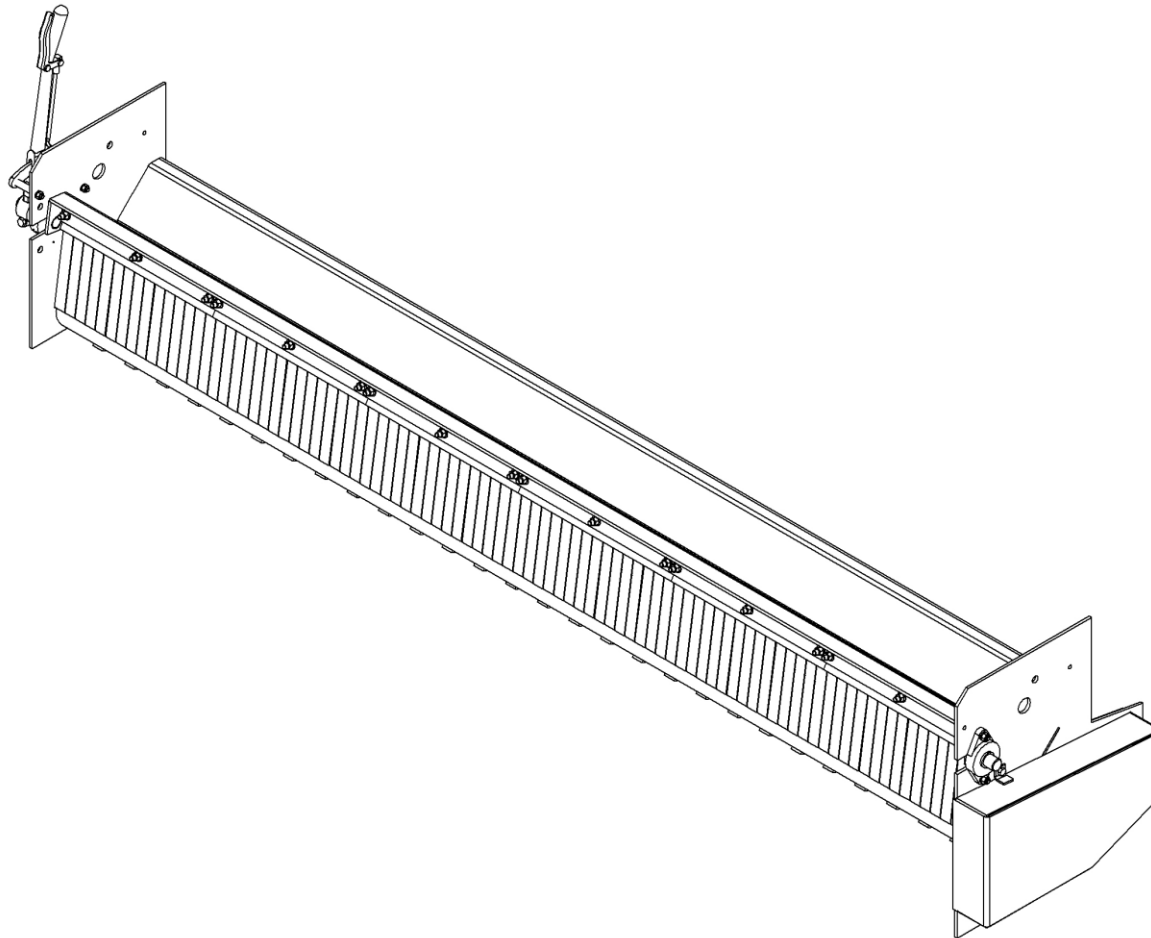
DATE: Monday, December 12, 2016

CHECKED BY:

DATE:

THE INFORMATION CONTAINED IN THIS DRAWING IS THE SOLE PROPERTY OF CONCORD ROAD EQUIPMENT MFG. INC. ANY REPRODUCTION IN PART OR AS A WHOLE WITHOUT THE WRITTEN PERMISSION OF CONCORD ROAD EQUIPMENT MFG. INC. IS PROHIBITED.

# 195 SERIES UNDER TAILGATE STRAIGHT DROP SPREADERS



ITEM NO.	PART NUMBER	Description	QTY.
1	C001-00931	HANDLE SLEEVE, KEYED	1
2	C001-00932	STAND-OFF, RATCHET LEVER ASSEMBLY	2
3	C001-07012	ASSEMBLY, HOPPER	1
4	C001-07013	WELDMENT, CHAIN COVER	1
5	C001-07018	DRIVE ADJUSTMENT PLATE	1
6	C010-00006	HYDRAULIC MOTOR	1
7	C050-00015	SPROCKET, 15T, #50	1
8	C050-00016	SPROCKET, 50BS40X1	1
9	C050-00043A	DRIVE CHAIN, BERMER - INNER LINK	30
10	C050-00043C	DRIVE CHAIN, BERMER - OUTER LINK	30
11	C060-00033	RATCHET LEVER	1
12	C060-00033A	RATCHET LEVER PAWL	1
13	CSC5-12134	HEX BOLT, 1/2in - 13 x 1-3/4 LONG, GRADE 5	2
14	CSC5-38114	HEX BOLT, 3/8in - 16 x 1-1/4 LONG, GRADE 5	7
15	CSC5-5163	HEX BOLT, 5/16in - 18 x 3 LONG, GRADE 5	2
16	FWSAE-38	3/8SAE WASHER, STEEL	4
17	HNC5-12	HEX NUT, 1/2-20	2
18	HNC5-38	HEX NUT, 3/8-24	7
19	HNC5-516	HEX NUT, 5/16-24	2
20	SLW-12	1/2 SPLIT LOCK WASHER, STEEL	2
21	SLW-38	3/8 SPLIT LOCK WASHER, STEEL	7
22	SLW-516	5/16 SPLIT LOCK WASHER, STEEL	2

## CONCORD ROAD EQUIPMENT MFG. INC.

348 CHESTER ST. PAINESVILLE, OH 44077  
PH: 440-357-5344 FAX: 440-357-1942

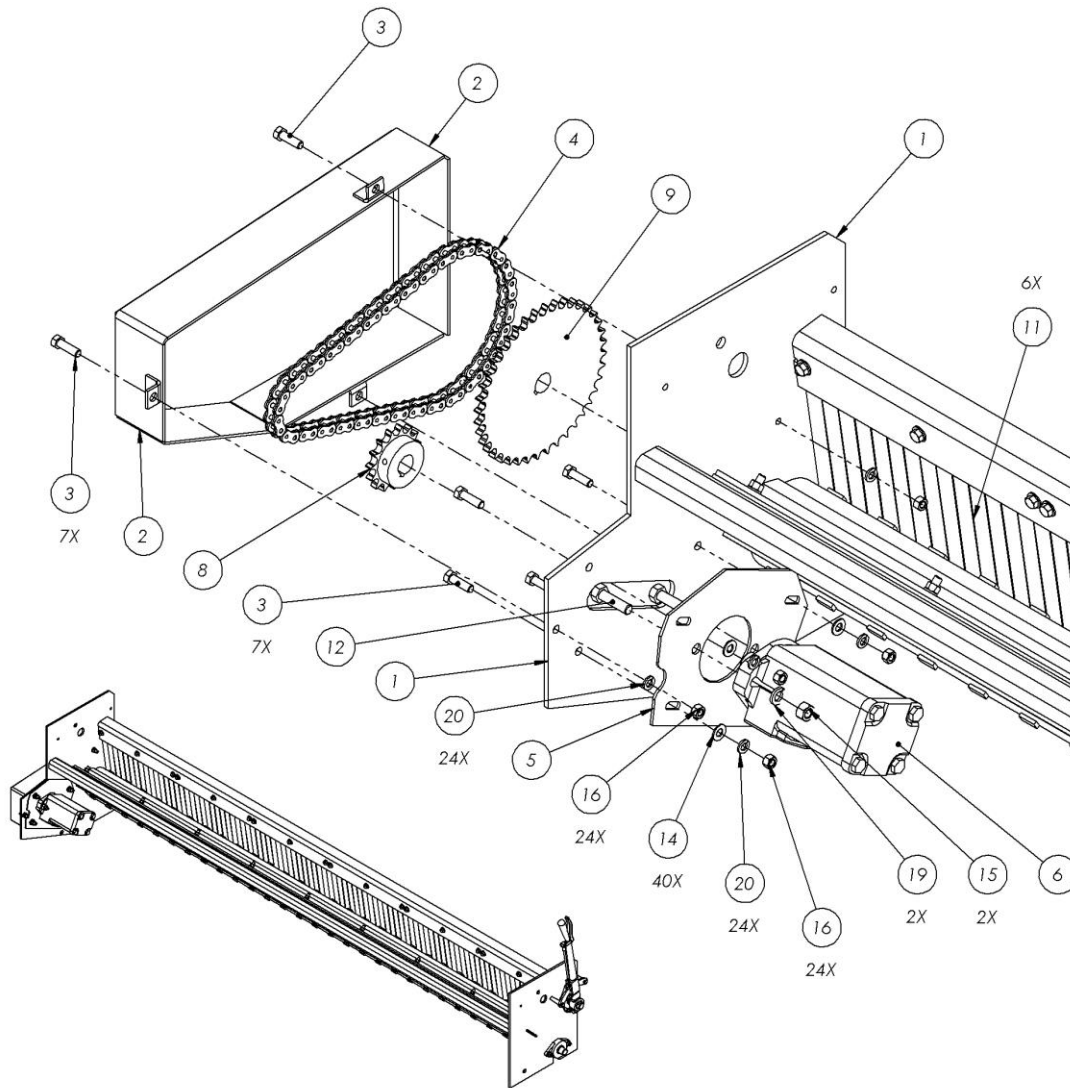
TITLE: ASSEMBLY, STRAIGHT DROP MATERIAL SPREADER - CRE-195SF-96 - PARTS BREAKDOWN

### PARTS LIST

PART NO.	CRE-195SF-96CS	SCALE: 1:16
DRAWN BY:	MICHAEL DAVIS	DATE: Thursday, November 17, 2016
CHECKED BY:		DATE:

THE INFORMATION CONTAINED IN THIS DRAWING IS THE SOLE PROPERTY OF CONCORD ROAD EQUIPMENT MFG. INC.. ANY REPRODUCTION IN PART OR AS A WHOLE WITHOUT THE WRITTEN PERMISSION OF CONCORD ROAD EQUIPMENT MFG. INC. IS PROHIBITED.

## 195 SERIES UNDER TAILGATE STRAIGHT DROP SPREADERS



ITEM NO.	PART NUMBER	Description	QTY.
1	C001-00366	DRIVE END PLATE	1
2	C001-07016	SIDE, TOP	1
3	CSC5-38114	HEX BOLT, 3/8in - 16 x 1-1/4 LONG, GRADE 5	7
4	C050-00043C	DRIVE CHAIN, BERMER - OUTER LINK	30
5	C001-07018	DRIVE ADJUSTMENT PLATE	1
6	C010-00006	HYDRAULIC MOTOR	1
7	C050-00011	FLANGE BEARING, 1" BORE, 2 HOLE W/ GREASE FITTING	4
8	C050-00015	SPROCKET, 15T, #50	1
9	C050-00016	SPROCKET, 50BS40X1	1
10	C050-00043A	DRIVE CHAIN, BERMER - INNER LINK	30
11	C060-00034	SPRING FINGER SECTION	6
12	CSC5-12134	HEX BOLT, 1/2in - 13 x 1-3/4 LONG, GRADE 5	2
13	CSC5-5163	HEX BOLT, 5/16in - 18 x 3 LONG, GRADE 5	2
14	FWSAE-38	3/8SAE WASHER, STEEL	40
15	HNC5-12	HEX NUT, 1/2-20	2
16	HNC5-38	HEX NUT, 3/8-24	24
17	HNC5-516	HEX NUT, 5/16-24	2
18	NNCS-38	NYLOCK HEX NUT, 3/8-16	18
19	SLW-12	1/2 SPLIT LOCK WASHER, STEEL	2
20	SLW-38	3/8 SPLIT LOCK WASHER, STEEL	24
21	SLW-516	5/16 SPLIT LOCK WASHER, STEEL	2

CONCORD ROAD EQUIPMENT MFG. INC.

348 CHESTER ST. PAINESVILLE, OH 44077  
PH: 440-357-5344 FAX: 440-357-1942

TITLE:ASSEMBLY, STRAIGHT DROP MATERIAL SPREADER - CRE-195SF-96 -  
PARTS BREAKDOWN

### MOTOR DRIVE BREAKDOWN

PART NO. CRE-195SF-96

SCALE: 1:16

DRAWN BY: MICHAEL DAVIS

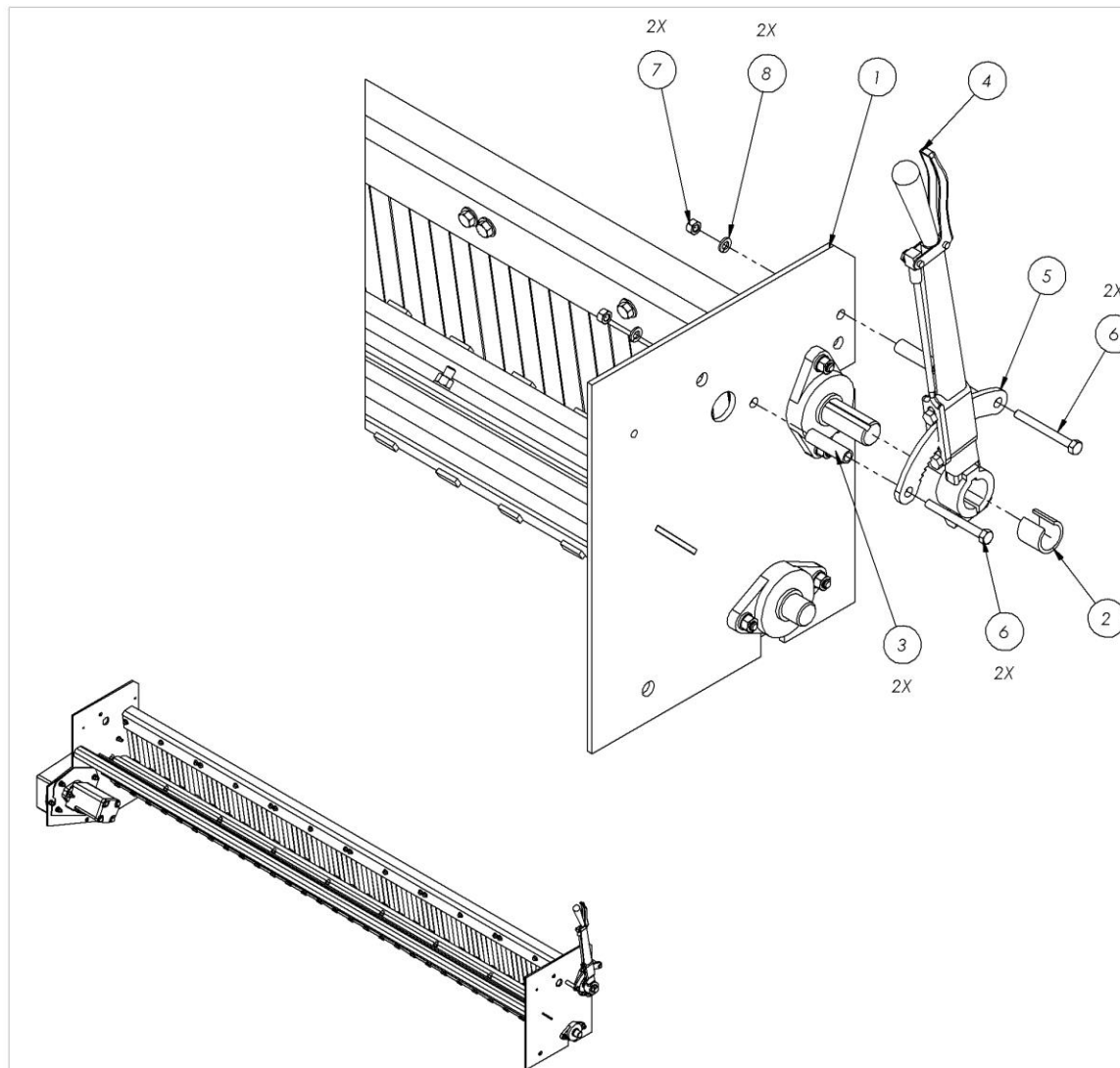
DATE: Thursday, November 17, 2016

CHECKED	
---------	--

DATE: \_\_\_\_\_

THE INFORMATION CONTAINED IN THIS DRAWING IS THE SOLE PROPERTY OF CONCORD ROAD EQUIPMENT MFG. INC.. ANY REPRODUCTION IN PART OR AS A WHOLE WITHOUT THE WRITTEN PERMISSION OF CONCORD ROAD EQUIPMENT MFG. INC. IS PROHIBITED.

# 195 SERIES UNDER TAILGATE STRAIGHT DROP SPREADERS



ITEM NO.	PART NUMBER	Description	QTY.
1	C001-00365	IDLER END PLATE	1
2	C001-00931	HANDLE SLEEVE, KEYED	1
3	C001-00932	STAND-OFF, RATCHET LEVER ASSEMBLY	2
4	C060-00033	RATCHET LEVER	1
5	C060-00033A	RATCHET LEVER PAWL	1
6	CSC5-5163	HEX BOLT, 5/16in - 18 x 3 LONG, GRADE 5	2
7	HNC5-516	HEX NUT, 5/16-24	2
8	SLW-516	5/16 SPLIT LOCK WASHER, STEEL	2

## CONCORD ROAD EQUIPMENT MFG. INC.

348 CHESTER ST. PAINESVILLE, OH 44077  
PH: 440-357-5344 FAX: 440-357-1942

TITLE: ASSEMBLY, STRAIGHT DROP MATERIAL SPREADER - CRE-195SF-96 -  
PARTS BREAKDOWN

HANDLE MOUNTING

PART NO. CRE-195SF-96

SCALE: 1:16

DRAWN BY: MICHAEL DAVIS

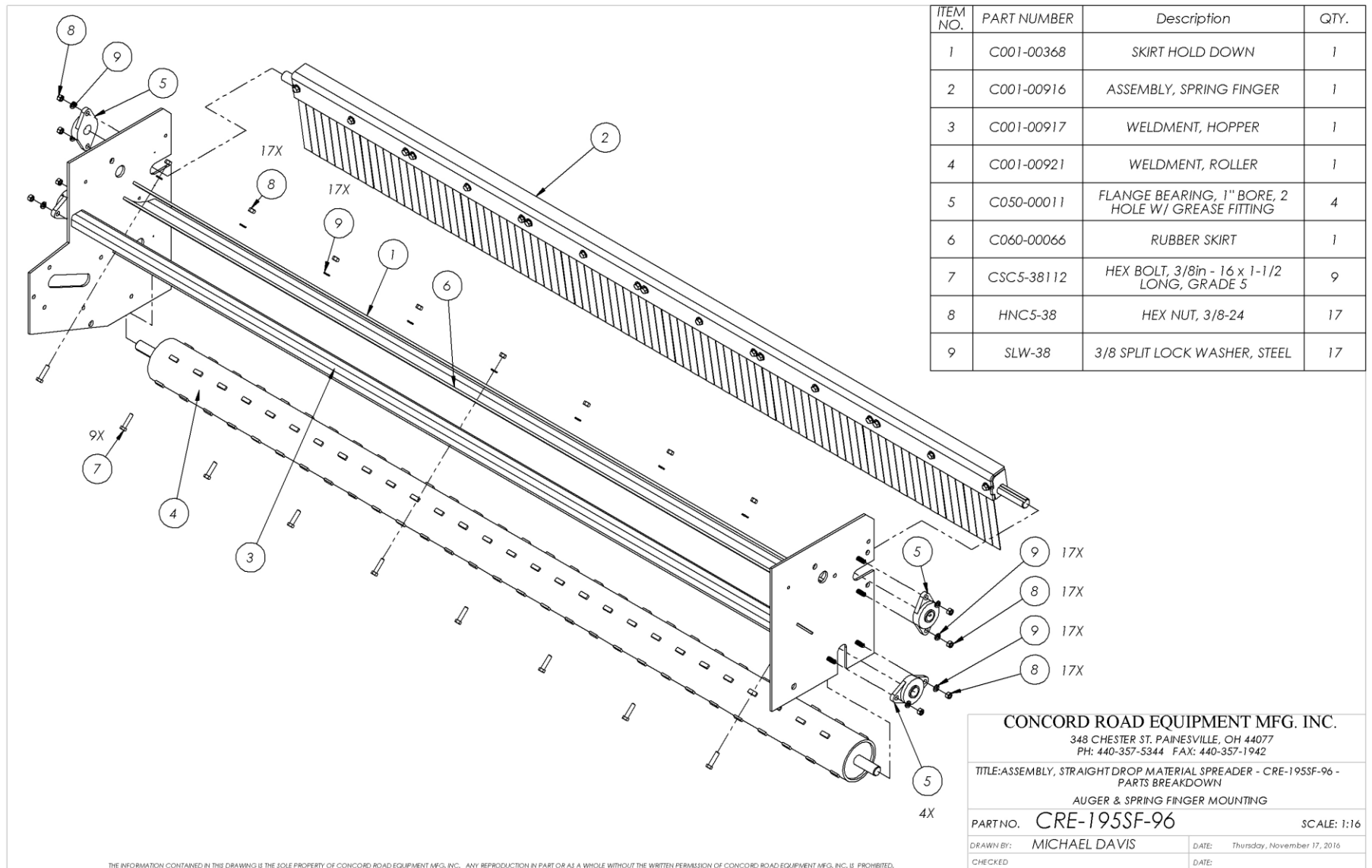
DATE: Thursday, November 17, 2016

CHECKED BY:

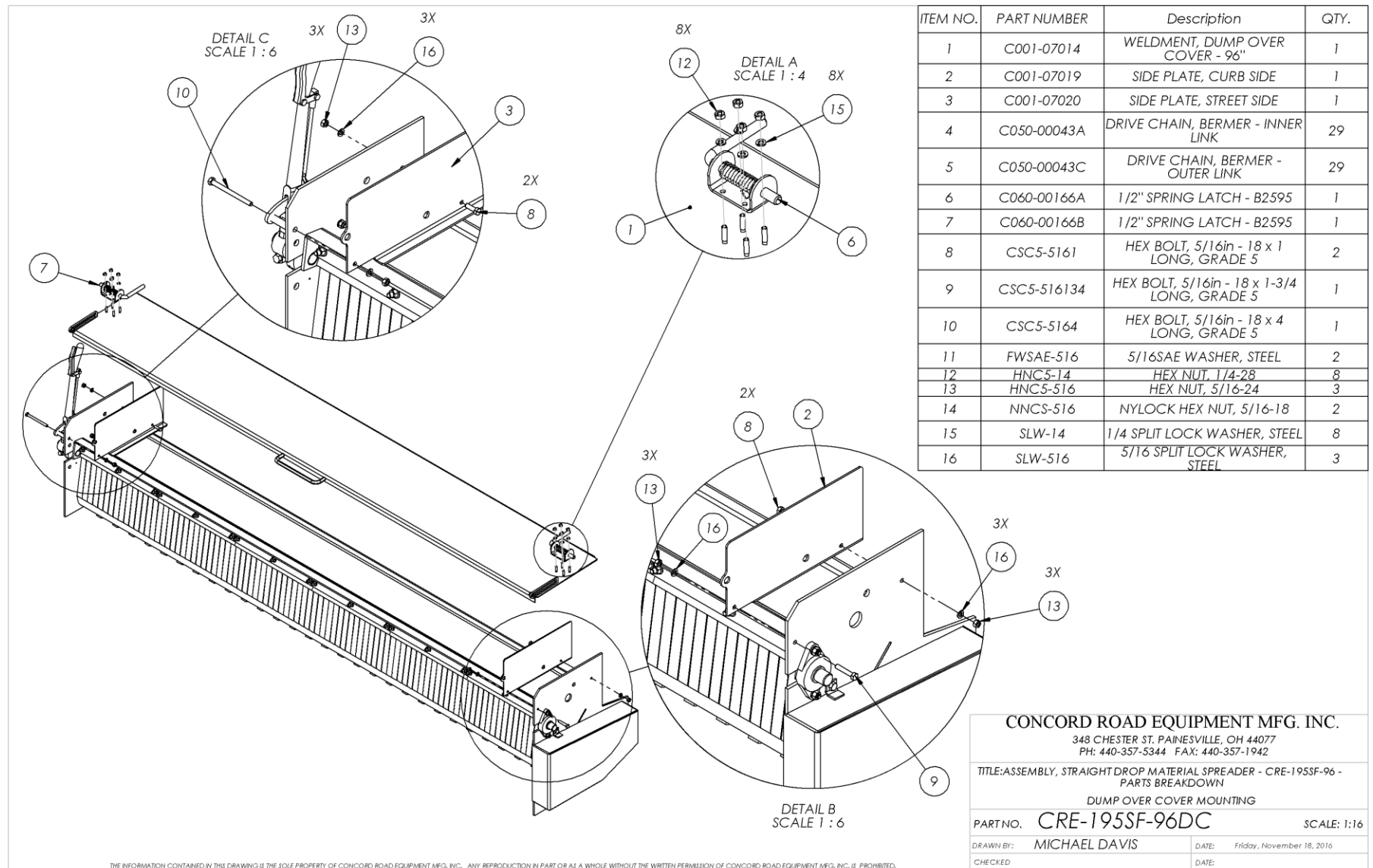
DATE:

THE INFORMATION CONTAINED IN THIS DRAWING IS THE SOLE PROPERTY OF CONCORD ROAD EQUIPMENT MFG. INC. ANY REPRODUCTION IN PART OR AS A WHOLE WITHOUT THE WRITTEN PERMISSION OF CONCORD ROAD EQUIPMENT MFG. INC. IS PROHIBITED.

# 195 SERIES UNDER TAILGATE STRAIGHT DROP SPREADERS



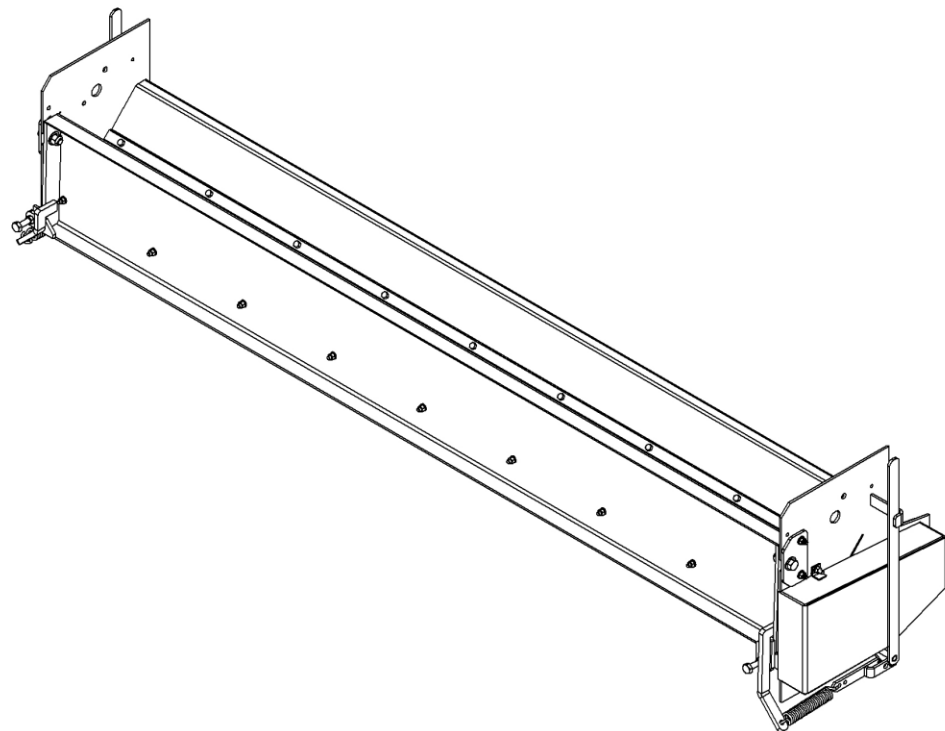
# 195 SERIES UNDER TAILGATE STRAIGHT DROP SPREADERS



# 195 SERIES UNDER TAILGATE STRAIGHT DROP SPREADERS

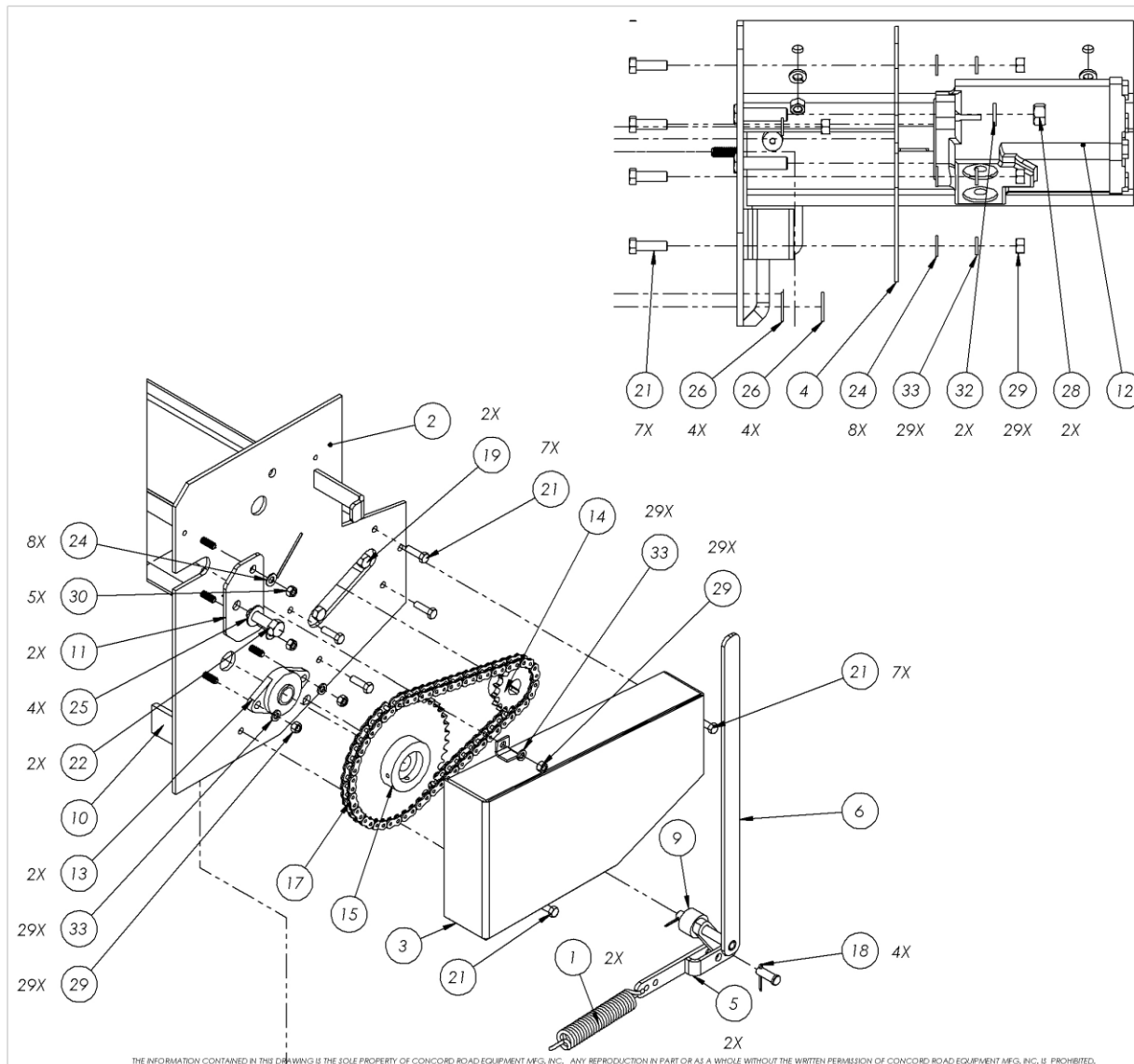
ITEM NO.	PART NUMBER	Description	QTY.
1	9654K391	8" STEEL EXTENSION SPRING	2
2	98306A382	CLEVIS PIN	2
3	C001-00368	SKIRT HOLD DOWN	1
4	C001-00917	WELDMENT, HOPPER - 96"	1
5	C001-07013	WELDMENT, CHAIN COVER	1
6	C001-07018	DRIVE ADJUSTMENT PLATE	1
7	C001-07093	WELDMENT, ROLLER	1
8	C001-07105	WELDMENT, DISCHARGE DOOR, 96" SOLID BACK	1
9	C001-07106	WELDMENT, LINKAGE ADJUSTER ARM - DISCHARGE DOOR	2
10	C001-07108	WELDMENT, STREETSIDE HANDLE, SOLID BACK	1
11	C001-07109	WELDMENT, CURBSIDE HANDLE, SOLID BACK	1
12	C001-07110	HANDLE BUSHING	1
13	C001-07111	WEARPLATE - SOLID BACK SPREADER	1
14	C001-07112	CURBSIDE HANDLE ANGLE	1
15	C001-07113	STREETSIDE HANDLE ANGLE	1
16	C001-07114	ADJUSTER ANGLE	1
17	C001-07115	HANDLE BUSHING, CURBSIDE	1
18	C001-07116	ADJUSTER ANGLE, CURBSIDE	1
19	C001-07117	PIVOT ADAPTER PLATE	2
20	C010-00006	HYDRAULIC MOTOR	1
21	C050-00011	FLANGE BEARING, Ø1" BORE, 2 BOLT	2
22	C050-00015	SPROCKET, 15T, #50	1
23	C050-00016	SPROCKET, 50BS40X1	1
24	C050-00043A	DRIVE CHAIN, BERMER - INNER LINK	30
25	C050-00043C	DRIVE CHAIN, BERMER - OUTER LINK	30
26	C060-00066	RUBBER SKIRT	1
27	C060-00198	COTTER PIN - 1/8" x 1-1/2" CP-18X112	4
28	CSC5-12134	HEX BOLT, 1/2in - 13 x 1-3/4 LONG, GRADE 5	2
29	CSC5-38112	HEX BOLT, 3/8in - 16 x 1-1/2 LONG, GRADE 5	9
30	CSC5-38114	HEX BOLT, 3/8in - 16 x 1-1/4 LONG, GRADE 5	7
31	CSC5-582	HEX BOLT, 5/8in - 11 x 2 LONG, GRADE 5	2
32	CSC8-123FT	HEX BOLT, 1/2in - 13 x 3 LONG, GRADE 8, FULL THREAD	2
33	FWSAE-38	3/8SAE WASHER, STEEL	8
34	FWSAE-58	5/8SAE WASHER, STEEL	4
35	FWSAE-916	9/16SAE WASHER, STEEL	4
36	HJNC-12	HEX JAM NUT, 1/2-13, Simplified	4
37	HNC5-12	HEX NUT, 1/2-20	2
38	HNC5-38	HEX NUT, 3/8-24	29
39	NNCS-38	NYLOCK HEX NUT, 3/8-16	5
40	NNCS-58	NYLOCK HEX NUT, 5/8-11	2
41	SCHCSCREW 0.375-16x1.25x1.25-HX-N		9
42	SLW-12	1/2 SPLIT LOCK WASHER, STEEL	2
43	SLW-38	3/8 SPLIT LOCK WASHER, STEEL	29

THE INFORMATION CONTAINED IN THIS DRAWING IS THE SOLE PROPERTY OF CONCORD ROAD EQUIPMENT MFG. INC.. ANY REPRODUCTION IN PART OR AS A WHOLE WITHOUT THE WRITTEN PERMISSION OF CONCORD ROAD EQUIPMENT MFG. INC. IS PROHIBITED.



F				
ZONE	REV.	DESCRIPTION	DATE	APPROVED
<b>CONCORD ROAD EQUIPMENT MFG. INC.</b> 348 CHESTER ST. PAINESVILLE, OH 44077 PH: 440-357-5344 FAX: 440-357-1942				
<b>TITLE:</b> ASSEMBLY, SOLID BACK 96" STRAIGHT DROP SPREADER - CRE-1953B-96CS BILL OF MATERIALS				
<b>PART NO.</b> C140-00025		SCALE: 1:16		
<b>DRAWN BY:</b> MICHAEL DAVIS			<b>DATE:</b> Monday, December 12, 2016	
<b>CHECKED BY:</b>			<b>DATE:</b>	

# 195 SERIES UNDER TAILGATE STRAIGHT DROP SPREADERS



ITEM NO.	PART NUMBER	Description	QTY.
1	9654K391	8" STEEL EXTENSION SPRING	2
2	C001-00917	WELDMENT, HOPPER - 96"	1
3	C001-07013	WELDMENT, CHAIN COVER	1
4	C001-07018	DRIVE ADJUSTMENT PLATE	1
5	C001-07106	WELDMENT, LINKAGE ADJUSTER ARM - DISCHARGE DOOR	2
6	C001-07109	WELDMENT, CURBSIDE HANDLE, SOLID BACK	1
7	C001-07111	WEARPLATE - SOLID BACK SPREADER	1
8	C001-07112	CURBSIDE HANDLE ANGLE	1
9	C001-07115	HANDLE BUSHING, CURBSIDE	1
10	C001-07116	ADJUSTER ANGLE, CURBSIDE	1
11	C001-07117	PIVOT ADAPTER PLATE	2
12	C010-00006	HYDRAULIC MOTOR	1
13	C050-00011	FLANGE BEARING, Ø1" BORE, 2 BOLT	2
14	C050-00015	SPROCKET, 15T, #50	1
15	C050-00016	SPROCKET, 50BS40X1	1
16	C050-00043A	DRIVE CHAIN, BERMER - INNER LINK	30
17	C050-00043C	DRIVE CHAIN, BERMER - OUTER LINK	30
18	C060-00198	COTTER PIN - 1/8" x 1-1/2" CP- 18X112	4
19	CSC5-12134	HEX BOLT, 1/2in - 13 x 1-3/4 LONG, GRADE 5	2
20	CSC5-38112	HEX BOLT, 3/8in - 16 x 1-1/2 LONG, GRADE 5	9
21	CSC5-38114	HEX BOLT, 3/8in - 16 x 1-1/4 LONG, GRADE 5	7
22	CSC5-582	HEX BOLT, 5/8in - 11 x 2 LONG, GRADE 5	2
23	CSC8-123FT	HEX BOLT, 1/2in - 13 x 3 LONG, GRADE 8, FULL THREAD	2
24	FWSAE-38	3/8SAE WASHER, STEEL	8
25	FWSAE-58	5/8SAE WASHER, STEEL	4
26	FWSAE-916	9/16SAE WASHER, STEEL	4
27	HJNC-12	HEX JAM NUT, 1/2-13, Simplified	4
28	HNC5-12	HEX NUT, 1/2-20	2
29	HNC5-38	HEX NUT, 3/8-24	29
30	NNCS-38	NYLOCK HEX NUT, 3/8-16	5
31	NNCS-58	NYLOCK HEX NUT, 5/8-11	2
32	SLW-12	1/2 SPLIT LOCK WASHER, STEEL	2
33	SLW-38	3/8 SPLIT LOCK WASHER, STEEL	29

## CONCORD ROAD EQUIPMENT MFG. INC.

348 CHESTER ST. PAINESVILLE, OH 44077  
PH: 440-357-5344 FAX: 440-357-1942

TITLE: ASSEMBLY, SOLID BACK 96" STRAIGHT DROP SPREADER -  
CRE-195SB-96CS

DRIVE COMPONENTS - EXPLODED VIEWS

PART NO. C140-00025

SCALE: 1:16

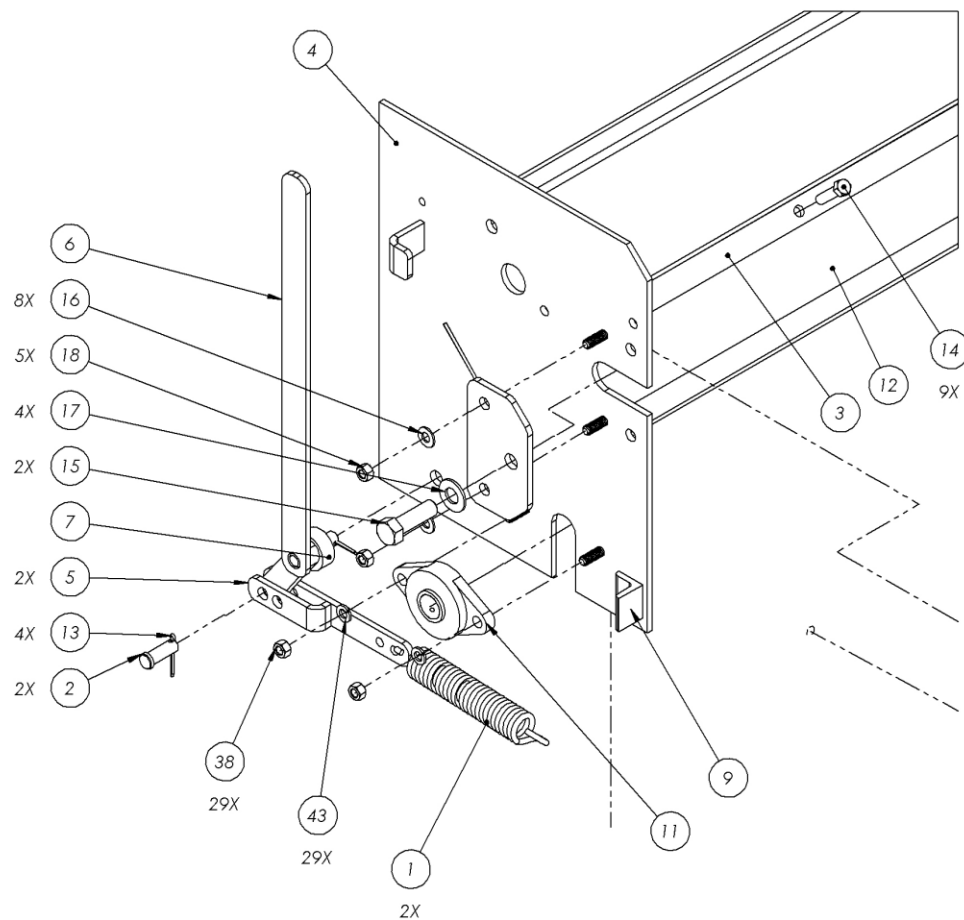
DRAWN BY: MICHAEL DAVIS

DATE: Monday, December 12, 2016

CHECKED  
BY:

DATE:

# 195 SERIES UNDER TAILGATE STRAIGHT DROP SPREADERS

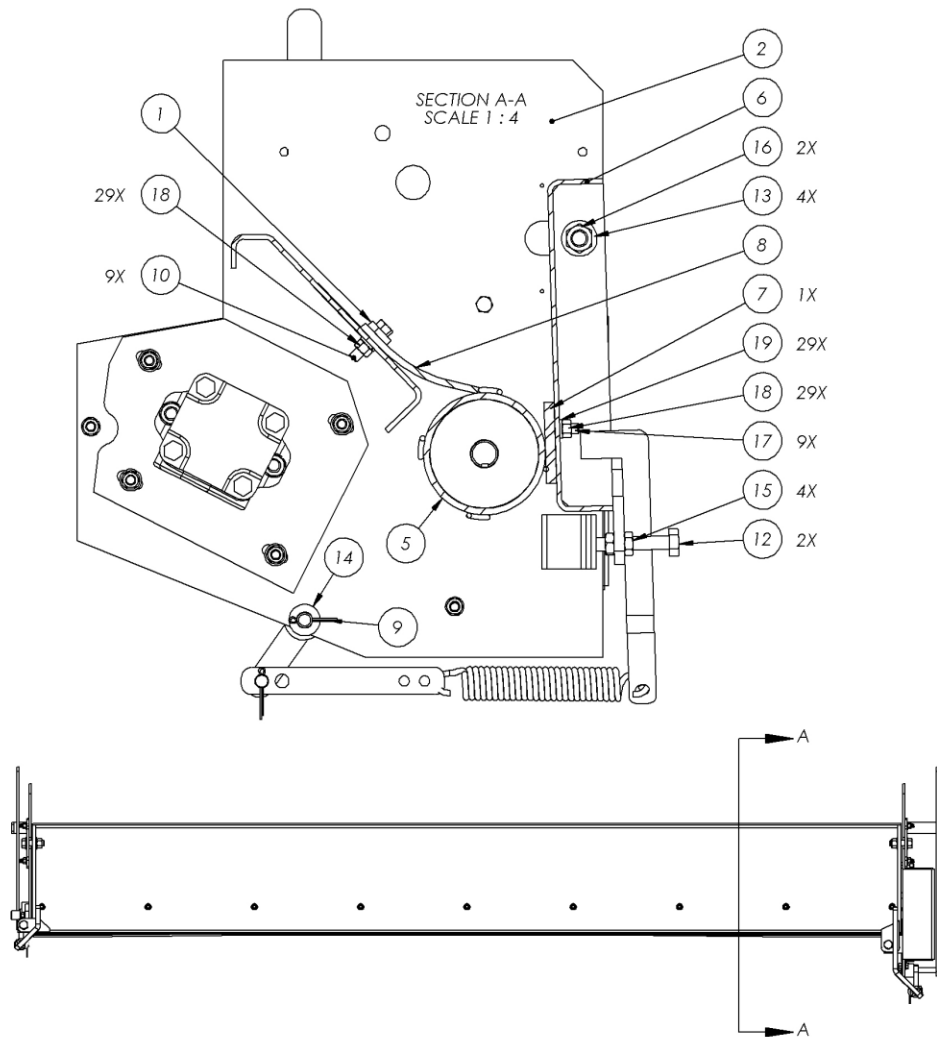


ITEM NO.	PART NUMBER	Description	QTY.
1	9654K391	8" STEEL EXTENSION SPRING	2
2	98306A382	CLEVIS PIN	2
3	C001-00368	SKIRT HOLD DOWN	1
4	C001-00917	WELDMENT, HOPPER - 96"	1
5	C001-07106	WELDMENT, LINKAGE ADJUSTER ARM - DISCHARGE DOOR	2
6	C001-07108	WELDMENT, STREETSIDE HANDLE, SOLID BACK	1
7	C001-07110	HANDLE BUSHING	1
8	C001-07113	STREETSIDE HANDLE ANGLE	1
9	C001-07114	ADJUSTER ANGLE	1
10	C001-07117	PIVOT ADAPTER PLATE	2
11	C050-00011	FLANGE BEARING, Ø1" BORE, 2 BOLT	2
12	C060-00066	RUBBER SKIRT	1
13	C060-00198	COTTER PIN - 1/8" x 1-1/2" CP-18X112	4
14	CSC5-38112	HEX BOLT, 3/8in - 16 x 1-1/2 LONG, GRADE 5	9
15	CSC5-582	HEX BOLT, 5/8in - 11 x 2 LONG, GRADE 5	2
16	FWSAE-38	3/8SAE WASHER, STEEL	8
17	FWSAE-58	5/8SAE WASHER, STEEL	4
18	NNCS-38	NYLOCK HEX NUT, 3/8-16	5

REVISIONS				
ZONE	REV.	DESCRIPTION	DATE	APPROVED
<b>CONCORD ROAD EQUIPMENT MFG. INC.</b> 348 CHESTER ST. PAINESVILLE, OH 44077 PH: 440-357-5344 FAX: 440-357-1942				
<b>TITLE:</b> ASSEMBLY, SOLID BACK 96" STRAIGHT DROP SPREADER - CRE-195SB-96CS IDLER END - EXPLODED VIEW				
<b>PART NO.</b> C140-00025			<b>SCALE:</b> 1:16	
<b>DRAWN BY:</b> MICHAEL DAVIS		<b>DATE:</b> Monday, December 12, 2016		
<b>CHECKED</b>		<b>DATE:</b>		

THE INFORMATION CONTAINED IN THIS DRAWING IS THE SOLE PROPERTY OF CONCORD ROAD EQUIPMENT MFG. INC.. ANY REPRODUCTION IN PART OR AS A WHOLE WITHOUT THE WRITTEN PERMISSION OF CONCORD ROAD EQUIPMENT MFG. INC. IS PROHIBITED.

# 195 SERIES UNDER TAILGATE STRAIGHT DROP SPREADERS



ITEM NO.	PART NUMBER	Description	QTY.
1	C001-00368	SKIRT HOLD DOWN	1
2	C001-00917	WELDMENT, HOPPER - 96"	1
3	C001-07013	WELDMENT, CHAIN COVER	1
4	C001-07018	DRIVE ADJUSTMENT PLATE	1
5	C001-07093	WELDMENT, ROLLER	1
6	C001-07105	WELDMENT, DISCHARGE DOOR, 96" SOLID BACK	1
7	C001-07111	WEARPLATE - SOLID BACK SPREADER	1
8	C060-00066	RUBBER SKIRT	1
9	C060-00198	COTTER PIN - 1/8" x 1-1/2" CP-18X112	4
10	CSC5-38112	HEX BOLT, 3/8in - 16 x 1-1/2 LONG, GRADE 5	9
11	CSC5-582	HEX BOLT, 5/8in - 11 x 2 LONG, GRADE 5	2
12	CSC8-123FT	HEX BOLT, 1/2in - 13 x 3 LONG, GRADE 8, FULL THREAD	2
13	FWSAE-58	5/8SAE WASHER, STEEL	4
14	FWSAE-916	9/16SAE WASHER, STEEL	4
15	HJNC-12	HEX JAM NUT, 1/2-13, Simplified	4
16	NNCS-58	NYLOCK HEX NUT, 5/8-11	2
17	SCHCSCREW 0.375-16x1.25x1.25-HX-N	HEX DRIVE, FLAT HEAD SCREW, 3/8in-16, STEEL	9
18	HNC5-38	HEX NUT, 3/8in-16, GRADE 5, STEEL	29
19	SLW-38	SPLIT LOCK WASHER, 3/8in, STEEL	29

REVISIONS				
ZONE	REV.	DESCRIPTION	DATE	APPROVED
CONCORD ROAD EQUIPMENT MFG. INC.				
348 CHESTER ST. PAINESVILLE, OH 44077				
PH: 440-357-5344 FAX: 440-357-1942				
TITLE: ASSEMBLY, SOLID BACK 96" STRAIGHT DROP SPREADER - CRE-195SB-96CS				
HARDWARE & ROLLER				
PART NO. C140-00025		SCALE: 1:16		
DRAWN BY: MICHAEL DAVIS		DATE: Monday, December 12, 2016		
CHECKED BY:		DATE:		

THE INFORMATION CONTAINED IN THIS DRAWING IS THE SOLE PROPERTY OF CONCORD ROAD EQUIPMENT MFG. INC. ANY REPRODUCTION IN PART OR AS A WHOLE WITHOUT THE WRITTEN PERMISSION OF CONCORD ROAD EQUIPMENT MFG. INC. IS PROHIBITED.