

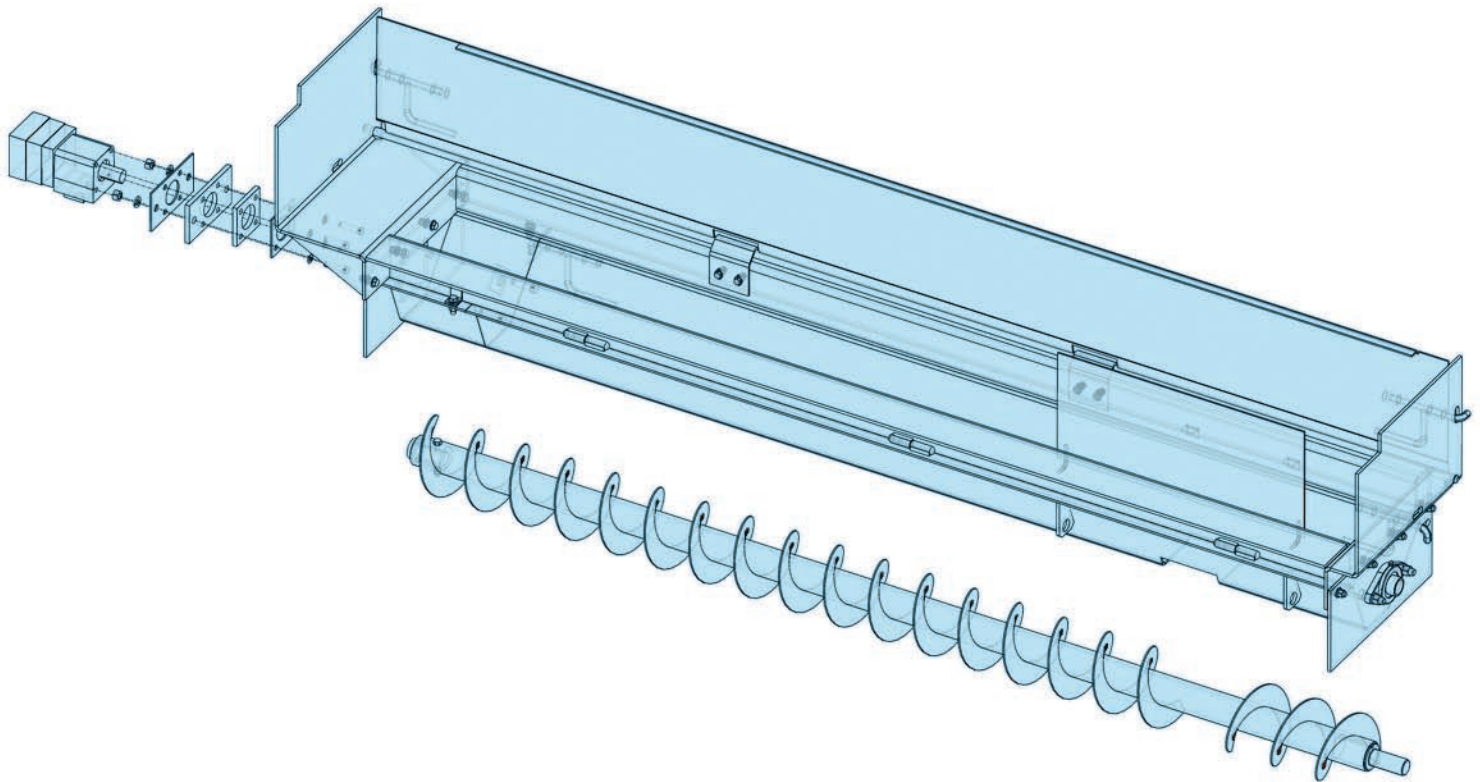
CONCORD

ROAD EQUIPMENT, INC.

CRE-965

SERIES UNDER TAILGATE SPREADER

OPERATION MANUAL & PARTS GUIDE



**FOR PARTS & SERVICE PLEASE
CONTACT YOUR AUTHORIZED
CONCORD DEALER**

**CONCORD ROAD EQUIPMENT, MFG
348 CHESTER STREET
PAINESVILLE, OHIO 44119**

**1-800-942 ROAD (7623)
1-440-357-5344**

2016

TABLE OF CONTENTS

Warranty Registration Form	2
Warranty	3-4
Safety Instructions	5
Under Tailgate Spreader Parts List	5-9
Main Assemblies	5
Motor Side	6-7
Bearing Side.....	8
Auger	9
Spinner Parts List.....	10-11
Mounting Instructions—Spreader	12-13
Mounting instructions—Spinner	14-15
Operations Instructions	16
Maintenance Instructions	17

Warranty Registration Record

Please complete the
Warranty Registration Form for your records.

Model Purchased: _____ Serial # _____

In Service Date: _____

Owners Complete Mailing Address:

Telephone #: _____

Fax #: _____

I have read, understand, and will apply the
contents of the Concord warranty, safety,
operation and maintenance manual.

Owners Signature

Owners Name Printed

CONCORD ROAD EQUIPMENT MFG., INC.
PAINESVILLE, OHIO

WARRANTY

Concord Road Equipment Mfg., Inc. warrants all new CRE products manufactured by this company according to the terms as set forth below, BUT EXCLUDES ANY IMPLIED WARRANTY OF MERCHANTABILITY and there are no warranties which extend beyond the description of the face of this warranty.

Should any Concord Road Equipment product prove defective in material or workmanship, under normal service and use, within a period of one year from date of shipping to the original purchaser, CRE shall repair or replace if the following conditions have been met: the equipment was properly set up, adjusted, used and operated by a trained person. Which on inspection by CRE appears to have been defective in workmanship or material, but the cost of labor in replacement of these parts will be paid by the purchaser and transportation of the equipment to the company's facility will also be the responsibility of the purchaser. This warranty will be effective only if CRE receives written notice of the equipments defect or failure to perform within thirty (30) days of the expiration of the (1) one year warranty period. This warranty does not cover and will not be effective in the event that any defect or failure to perform occurs as a result of a defect in a part accessory sold by this company but produced by another manufacturer. Such merchandise is warranted only through the manufacturer of the part or accessory. This warranty shall be void where equipment has been subject to misuse, neglect, alteration, accident, or when repaired with parts other than genuine CRE Mfg. Inc.

Concord Road Equipment's Mfg., Inc. obligations under this warranty shall be suspended during any period in which it is prevented from fulfilling its responsibilities by forces beyond our control such as lack of supplies, labor disputes, acts of God and transportation inadequacies. Damages for breach of this warranty shall be limited to replacement of the defective parts as set out herein and shall not include consequential damage for injuries to persons, property or loss of profits occasioned by such defects. No representative or other person is authorized or permitted to make any warranty or assume for this company any liability not strictly in accordance with the foregoing.

This warranty shall extend only to the original purchaser of the equipment from Concord Road Equipment Mfg., Inc.

CONCORD ROAD EQUIPMENT MFG., INC.
965 SERIES UNDER TAILGATE SPREADER

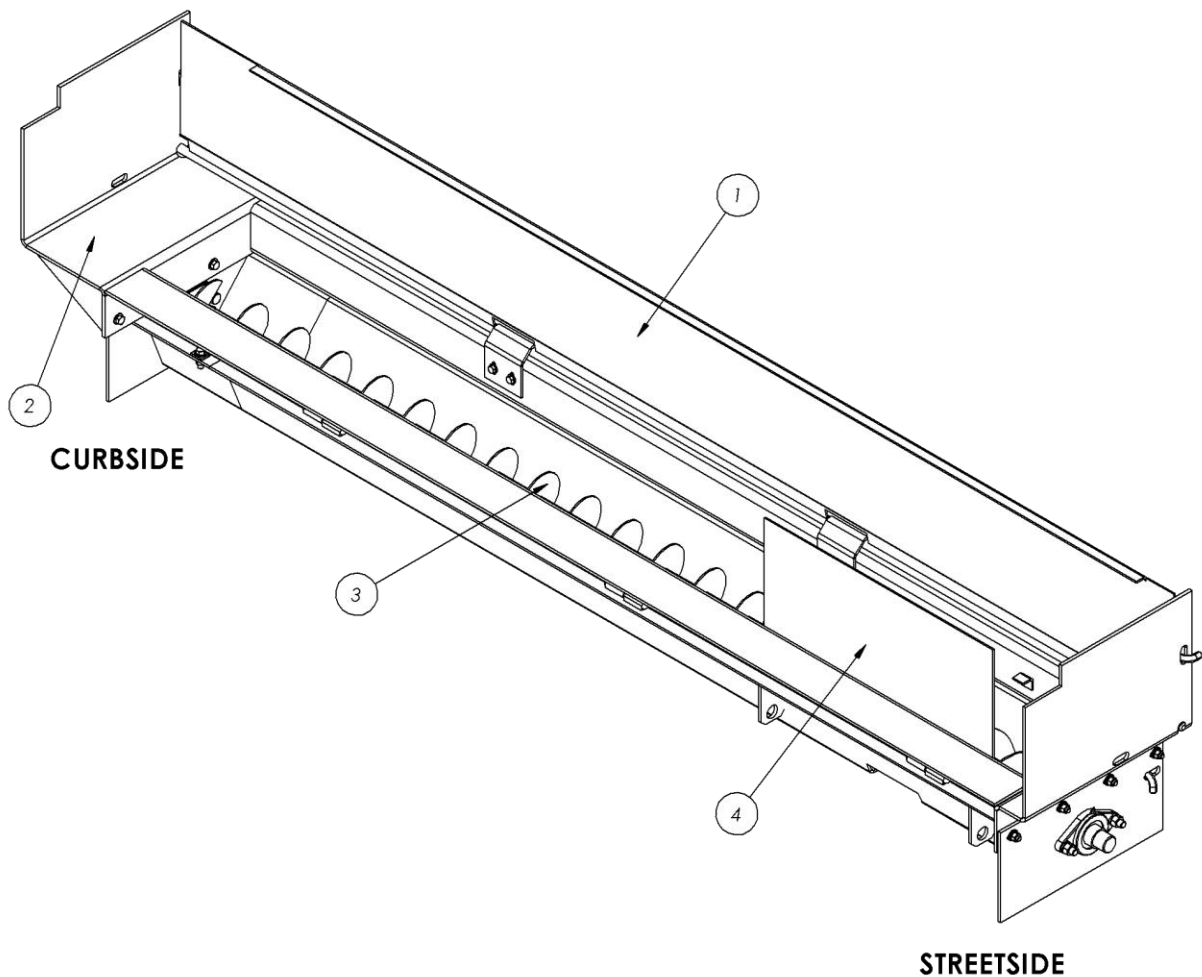
GENERAL

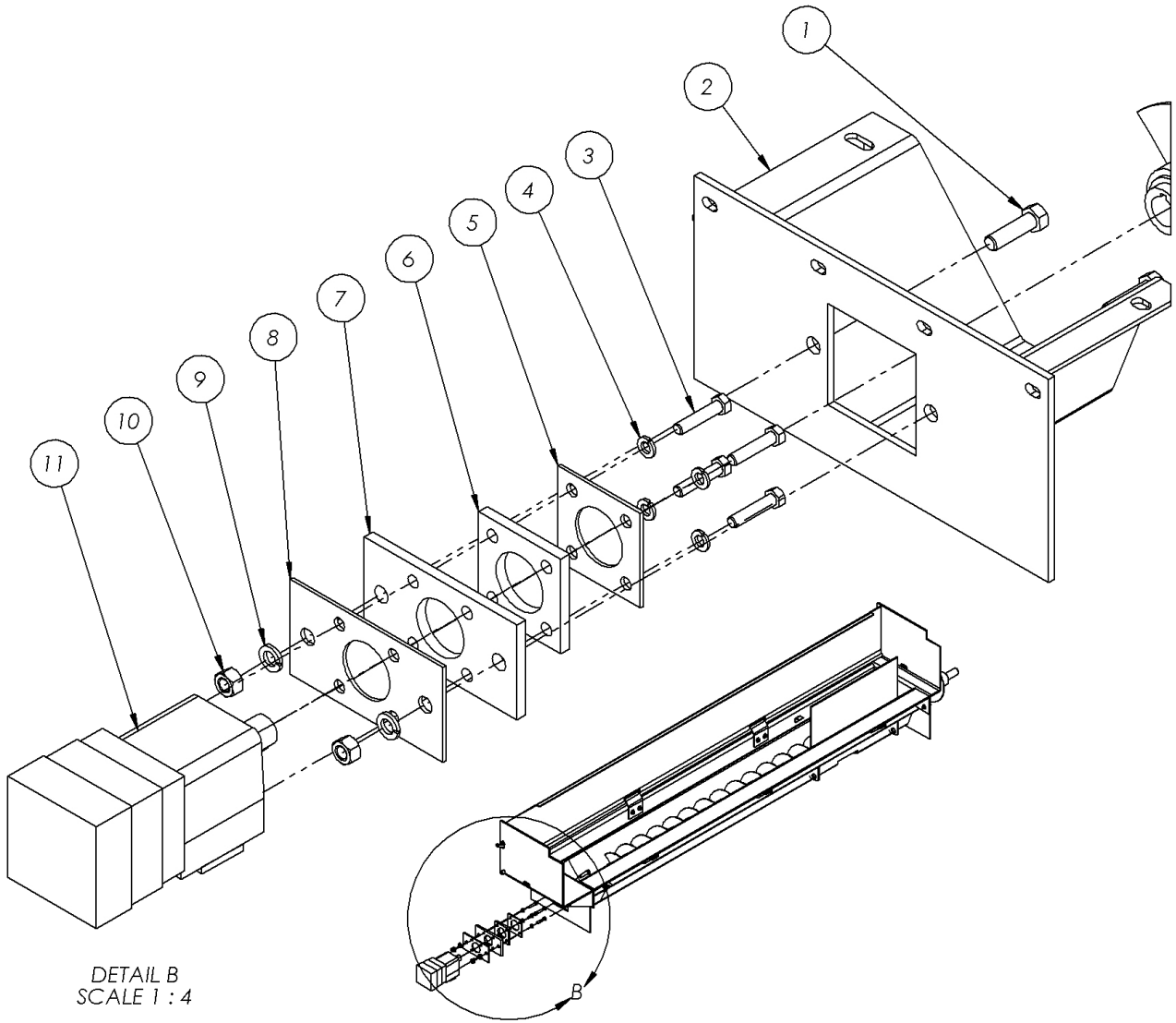
This under tailgate spreader has been designed to, when properly maintained, give you years of reliable and dependable service. As with all equipment, you must familiarize yourself with the operation of the machine BEFORE it is put into service. It is the responsibility of the owner of this machine to make sure that the person or persons operating the machine read and understand all safety, operation and maintenance instructions in this manual. Above all, always use good common sense when using your machine.

SAFETY INSTRUCTIONS:

- 1) Observe and follow all safety precautions to avoid personal injury and/or damage to the machine.
- 2) Read and follow all safety, operation and maintenance instructions in this manual before using the machine.
- 3) Do not stand, sit or ride on any part of this machine.
- 4) Keep all body parts, clothing, etc., away from moving parts.
- 5) All drive covers, shields and guards should be in their proper locations and in good working condition before operating this machine.
- 6) Always turn off hydraulic power source before performing maintenance. Never disconnect pressurized hydraulic lines failure to compile with this warning may result in property damage, serious injury or death.
- 7) Do not attempt to remove any blockage without first turning off the hydraulic power source and disconnecting the hydraulic hoses from machine.
- 8) Fill out warranty form included with this manual.
- 9) Always use your equipment in a safe and courteous manner.

MILD STEEL CONSTRUCTION			
#	PART NUMBER	DESCRIPTION	QTY
1	C001-00202	COVER WELDMENT, 965	1
2	C001-00175	FRAME WELDMENT, 965	1
3	C001-00176	AUGER SHAFT WELDMENT, 965 SINGLE AUGER	1
4	C001-00177	SPLASH GUARD WELDMENT, 965	1
STAINLESS STEEL CONSTRUCTION			
#	PART NUMBER	DESCRIPTION	QTY
1	C001-00202S	COVER WELDMENT, 965	1
2	C001-00175S	FRAME WELDMENT, 965	1
3	C001-00176	AUGER SHAFT WELDMENT, 965 SINGLE AUGER	1
4	C001-00177S	SPLASH GUARD WELDMENT, 965	1





PART LIST – LISTED ON NEXT PAGE

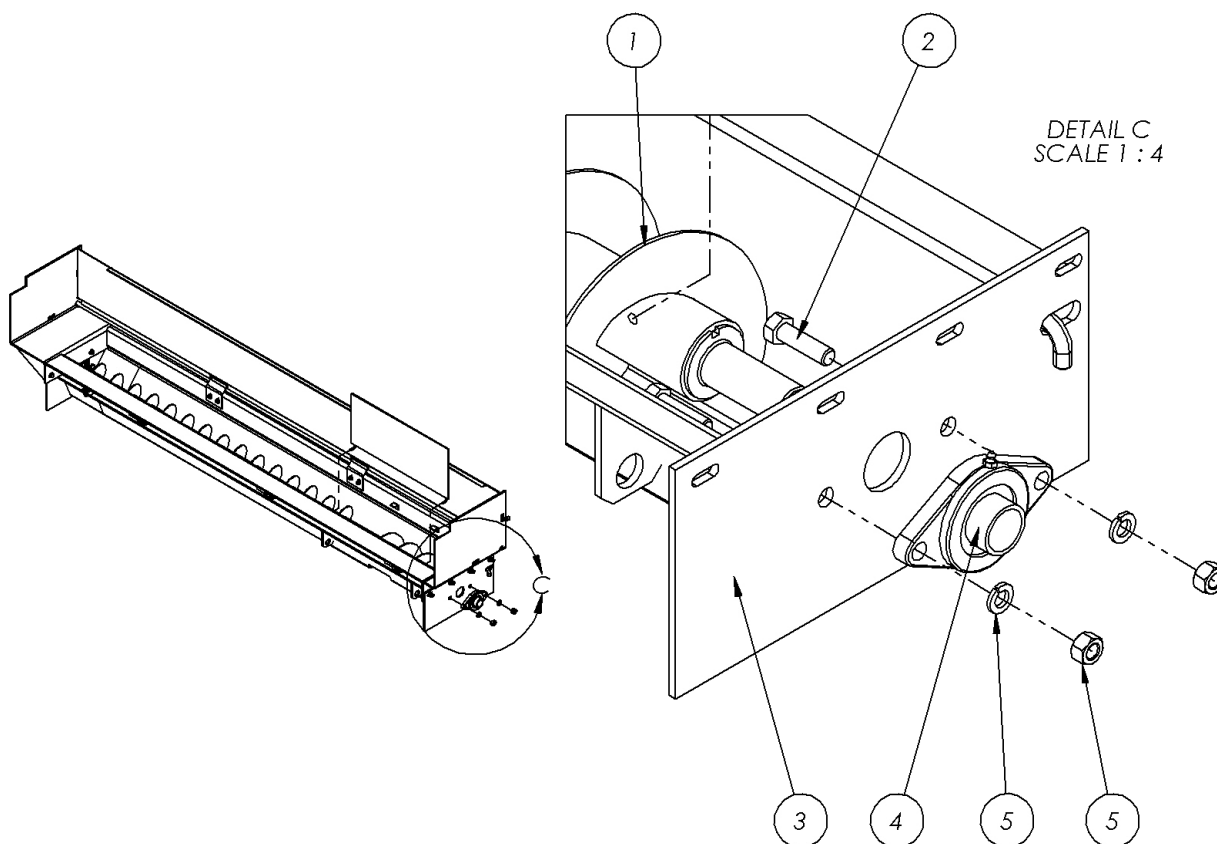
MILD STEEL CONSTRUCTION			
#	PART NUMBER	DESCRIPTION	QTY
1	CSC5-12134	HEX BOLT, 1/2"-13 x 1-3/4" LONG, GRADE 5	4
2	C001-00173	WELDMENT, TROUGH	1
3	CSC5-38134	HEX BOLT, 3/8"-16 x 1-3/4" LONG, GRADE 5	4
4	LW-38	3/8" SPLIT LOCK WASHER, STEEL	4
5	C001-00190	INSIDE MOTOR SHIM PLATE	1
6	C001-00191	INSIDE MOTOR SHIM PLATE GASKET	1
7	C001-00185	MOTOR SHIM PLATE GASKET , OUTSIDE	1
8	C001-00184	MOTOR SHIM PLATE, OUTSIDE	1
9	LW-12	1/2" SPLIT LOCK WASHER, STEEL	2
10	HNC5-12	HEX NUT, 1/2"-20, GRADE 5	2
11	C010-00001	HYDRAULIC MOTOR, 17.9 CUBIC INCH	1
STAINLESS STEEL CONSTRUCTION			
#	PART NUMBER	DESCRIPTION	QTY
1	CSCS-12134	HEX BOLT, 1/2"-13 x 1-3/4" LONG, STAINLESS	4
2	C001-00173S	WELDMENT, TROUGH	1
3	CSCSS-38134	HEX BOLT, 3/8"-16 x 1-3/4" LONG, STAINLESS	4
4	LWSS-38	3/8" SPLIT LOCK WASHER, STAINLESS	4
5	C001-00190S	INSIDE MOTOR SHIM PLATE	1
6	C001-00191	INSIDE MOTOR SHIM PLATE GASKET	1
7	C001-00185	MOTOR SHIM PLATE GASKET , OUTSIDE	1
8	C001-00184S	MOTOR SHIM PLATE, OUTSIDE	1
9	LWSS-12	1/2" SPLIT LOCK WASHER, STAINLESS	2
10	HNCSS-12	HEX NUT, 1/2"-20, STAINLESS	2
11	C010-00001	HYDRAULIC MOTOR, 17.9 CUBIC INCH	1

MILD STEEL CONSTRUCTION

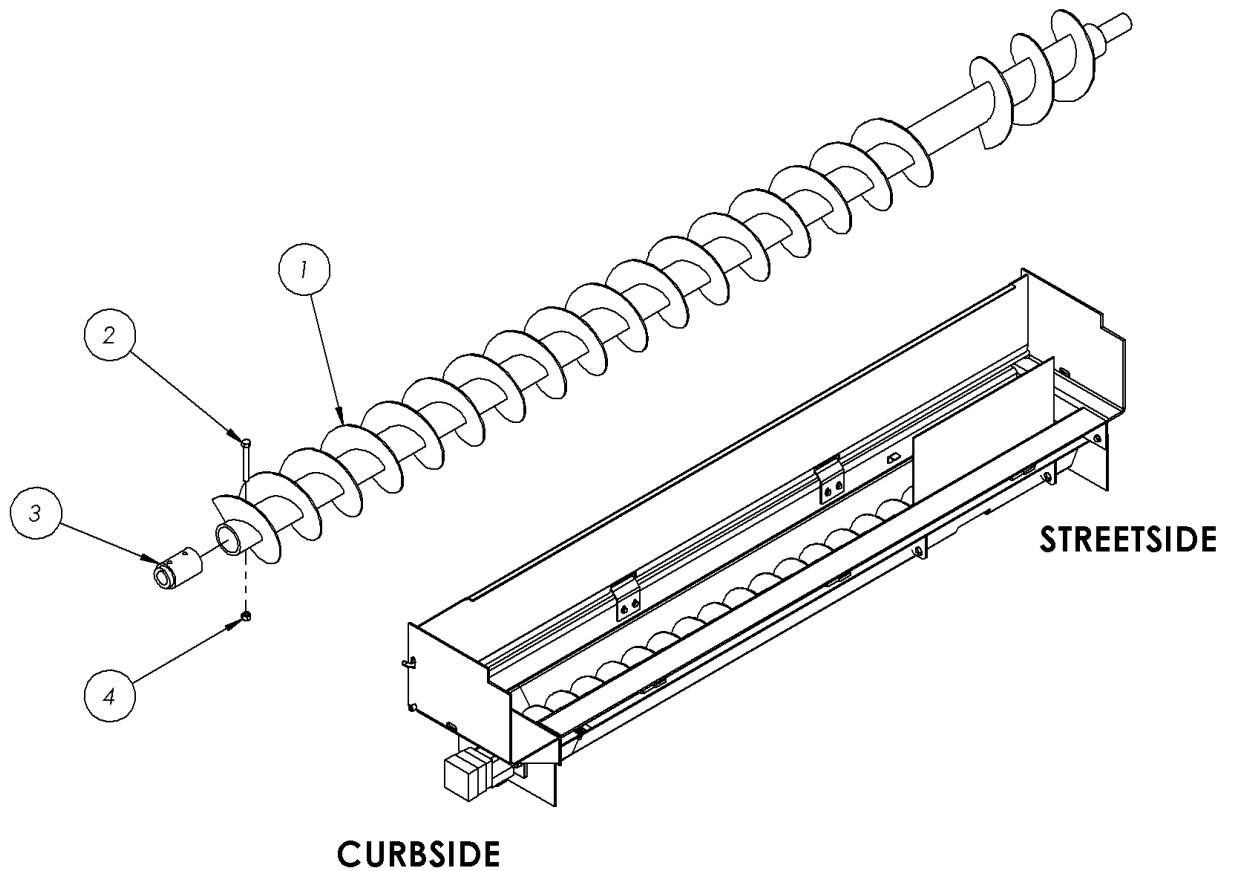
#	PART NUMBER	DESCRIPTION	QTY
1	C001-00176	ASSEMBLY, AUGER SHAFT, 965	1
2	CSC5-12134	HEX BOLT, 1/2"-13 x 1-3/4" LONG, GRADE 5	2
3	C001-00173	WELDMENT, TROUGH	1
4	C050-00001	BEARING, 1-1/4" BORE, 2 BOLT	1
5	LW-12	1/2" SPLIT LOCK WASHER, STEEL	2
6	HNC5-12	HEX NUT, 1/2"-20, GRADE 5	2

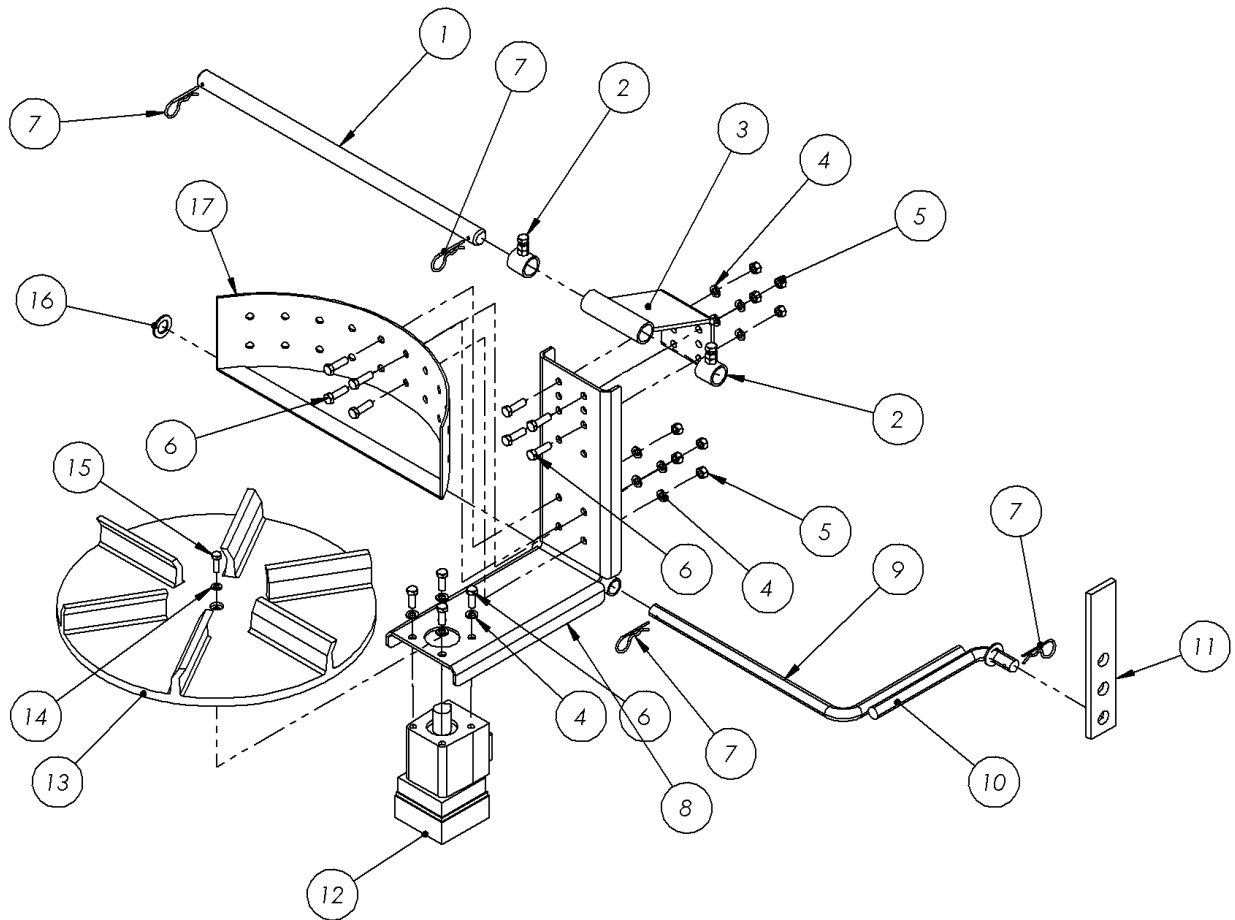
STAINLESS STEEL CONSTRUCTION

#	PART NUMBER	DESCRIPTION	QTY
1	C001-00176	ASSEMBLY, AUGER SHAFT, 965	1
2	CSCS-12134	HEX BOLT, 1/2"-13 x 1-3/4" LONG, STAINLESS	2
3	C001-00173S	WELDMENT, TROUGH	1
4	C050-00001	BEARING, 1-1/4" BORE, 2 BOLT	1
5	LWSS-12	1/2" SPLIT LOCK WASHER, STAINELSS	2
6	HNCSS-12	HEX NUT, 1/2"-20, STAINLESS	2



MILD STEEL CONSTRUCTION			
#	PART NUMBER	DESCRIPTION	QTY
1	C001-00213	WELDMENT, AUGER SHAFT, 965	1
2	CSC5-383	HEX BOLT, 3/8"-16 x 3" LONG, GRADE 5	1
3	C001-00052	AUGER COUPLING, MOTOR SIDE	1
4	NNC5-38	NYLOC NUT, 3/8", STEEL, GRADE 5	1





PART LIST – LISTED ON NEXT PAGE

MILD STEEL CONSTRUCTION			
#	PART NUMBER	DESCRIPTION	QTY
1	C001-00465	PIVOT ROD	1
2	C001-00586	ASSEMBLY, ADJUSTABLE STOP PIPE	2
3	C001-00461	WELDMENT, PIVOT ARM	1
4	LW-38	3/8" SPLIT LOCK WASHER, STEEL	12
5	HNC5-38	HEX NUT, 3/8", GRADE 5	8
6	CSC5-381	HEX BOLT, 3/8"-16 x 1". GRADE 5	12
7	C060-00191	COTTER PIN, FITS 5/8"-7/8" PIN DIA., 2-1/2" LONG	4
8	C001-00463	WELDMENT, SPINNER MOUNTING BASE	1
9	C001-00561	SPINNER LEVELING ARM, LONG	1
10	C001-00562	SPINNER LEVELING ARM, SHORT	1
11	C001-00563	SPINNER LEVELING BRACKET	1
12	C010-00072	HYDRAULIC MOTOR, 3.2 CUBIC INCH	1
13	C050-00002	SPINNER DISK, 20", NON-DIRECTIONAL FINS	1
14	SLW-516	5/16" SPLIT LOCK WASHER, STEEL	1
15	CSC5-5161	HEX BOLT, 5/16-18 x 1", GRADE 5	1
16	FWSAE-34	FLAT WASHER, 3/4", STEEL	1
17	C001-00462	WELDMENT, MATERIAL DEFLECTOR, SHORT	1
18	C001-00473	(OPTIONAL) - SPINNER HANGER EXTENSION	1
19	C001-00595	(OPTIONAL) - WELDMENT, MATERIAL DEFLECTOR, LONG	1
20	C050-00028	(OPTIONAL) - EXTREME DUTY POLY SPINNER	1
STAINLESS STEEL CONSTRUCTION			
#	PART NUMBER	DESCRIPTION	QTY
1	C001-00465S	PIVOT ROD	1
2	C001-00586S	ASSEMBLY, ADJUSTABLE STOP PIPE	2
3	C001-00461S	WELDMENT, PIVOT ARM	1
4	LWSS-38	3/8" SPLIT LOCK WASHER, STAINLESS	12
5	HNCS-38	HEX NUT, 3/8", STAINLESS	8
6	CSCS-381	HEX BOLT, 3/8"-16 x 1". STAINLESS	12
7	C060-00191	COTTER PIN, FITS 5/8"-7/8" PIN DIA., 2-1/2" LONG	4
8	C001-00463S	WELDMENT, SPINNER MOUNTING BASE	1
9	C001-00561S	SPINNER LEVELING ARM, LONG	1
10	C001-00562S	SPINNER LEVELING ARM, SHORT	1
11	C001-00563S	SPINNER LEVELING BRACKET	1
12	C010-00072	HYDRAULIC MOTOR, 3.2 CUBIC INCH	1
13	C050-00002	SPINNER DISK, 20", NON-DIRECTIONAL FINS	1
14	LWSS-516	5/16" SPLIT LOCK WASHER, STAINLESS	1
15	CSCS-5161	HEX BOLT, 5/16-18 x 1", STAINLESS	1
16	FWSS-SS-34	FLAT WASHER, 3/4", STAINLESS	1
17	C001-00462S	WELDMENT, MATERIAL DEFLECTOR, SHORT	1
18	C001-00473S	(OPTIONAL) - SPINNER HANGER EXTENSION	1
19	C001-00595S	(OPTIONAL) - WELDMENT, MATERIAL DEFLECTOR, LONG	1
20	C050-00028	(OPTIONAL) - EXTREME DUTY POLY SPINNER	1

MOUNTING INSTRUCTIONS

965 SERIES UNDER TAILGATE AUGER SPREADER

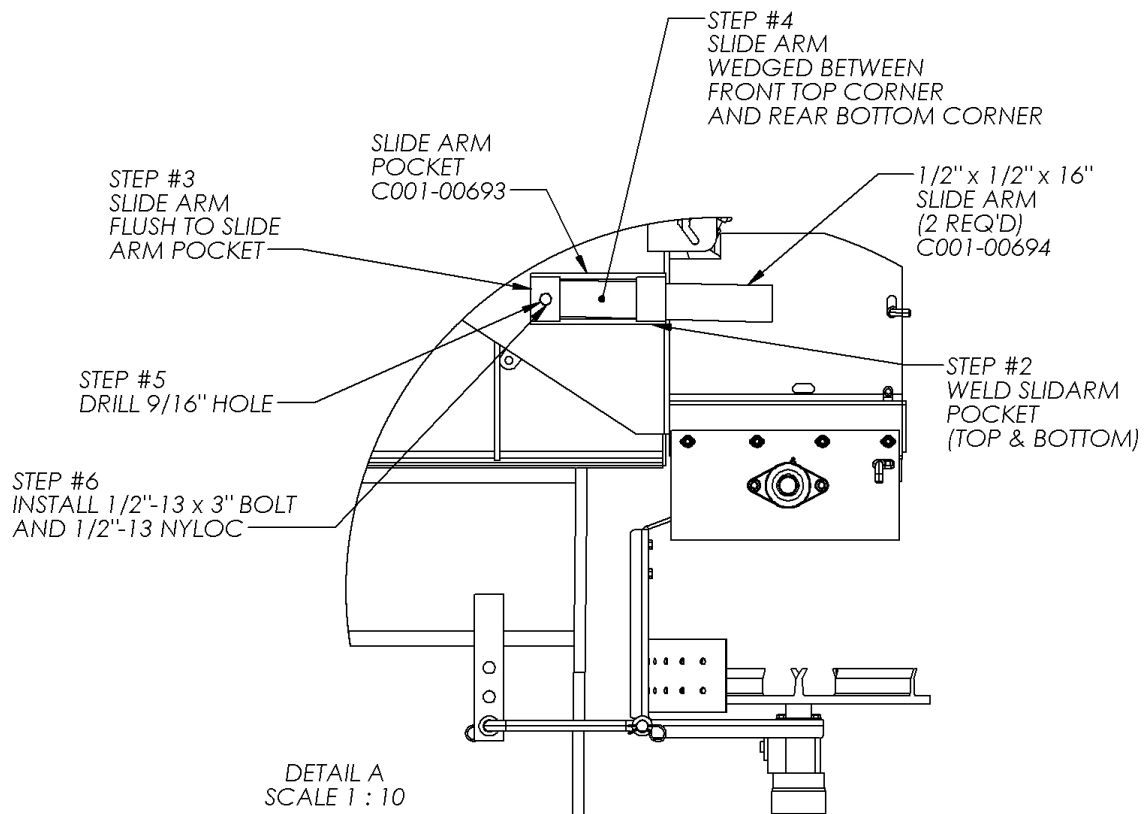
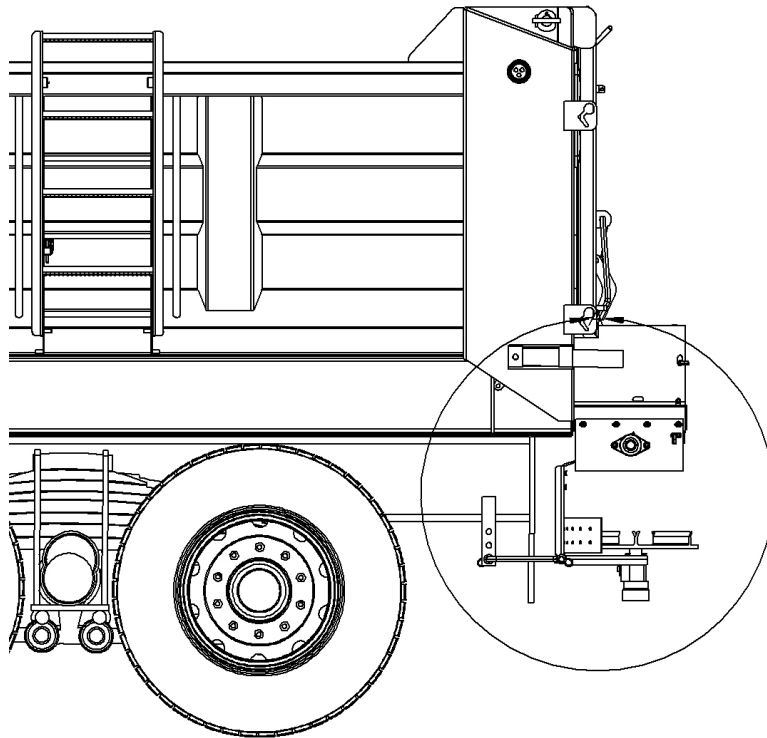
Verify that all necessary components have been delivered before attempting the mounting procedure. Refer to parts list on pages 5-8.

- 1) Weld slide arm pockets (C001-00693 or C001-00693S) to the bottom of the rear corner post of the dump body with the hole in the slide arm pocket towards the front of the vehicle. Refer to installation drawing on page 11.
- 2) Insert slide arm (C001-00694 or C001-00694S) so that leading edge of slide arm is flush to the front edge of the slide arm pocket. Refer to installation drawing.
- 3) Slide arm should be wedged against the top front corner and the bottom rear corner of the slide arm pocket. Refer to installation drawing.
- 4) Using the hole in the slide arm pocket, drill a 9/16" hole through slide arm and dump body rear corner post.
- 5) Install ½" x 3" bolt, and ½" nylok lock nut.
- 6) Repeat steps 2 through 6 on the opposing side of the dump body. Use the same placement of the slide arm pocket as you did during the previous slide arm pocket installation.
- 7) Carefully raise the spreader so that the front of the spreader is flush to the rear apron of the dump body. Space the top of the spreader 1-1/4" below the lower tailgate latch bars. Verify that the cover assembly of the spreader opens without any interference with latch bars. If there is interference, lower the spreader in ¼" increments until there is no interference. The spreader should sit level and fit tightly against the rear apron of the dump body.

NOTE: You may have to weld or bolt a spill plate across the entire length of the spreader front support rail if there are excessive gaps between the spreader and the dump body rear apron.

Again verify that unit is level and fits tightly to the rear apron of the dump body. Weld or bolt the slide arm to the spreader on both sides of the unit. You may have to add shim plates due to varying dump body widths. If bolts are used to install the slide arm pockets to the spreader, use two bolts per side and mount bolts so that the head of the bolt is on the inside of the spreader to avoid any interference with the tailgate.

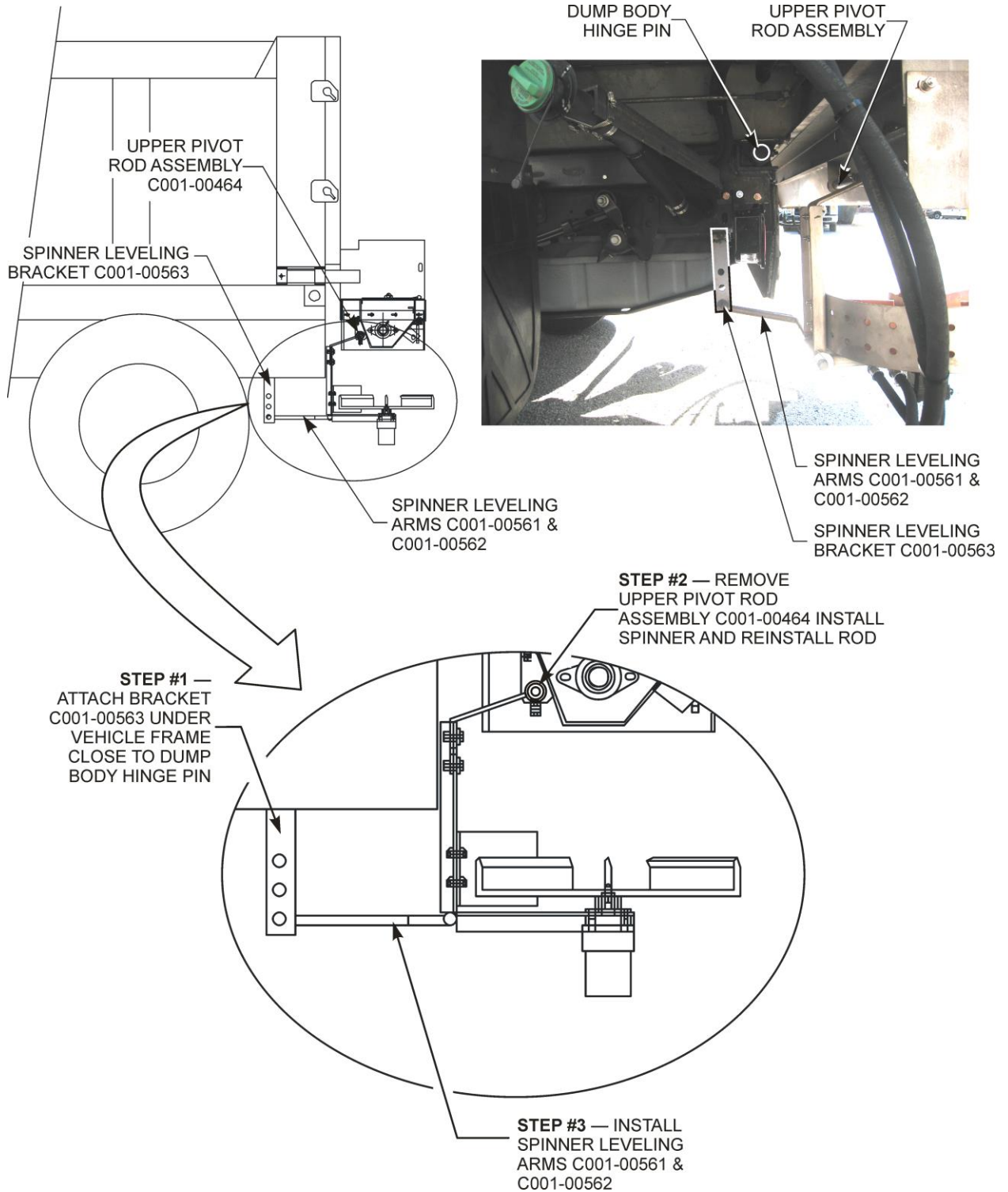
Verify that all bolts are securely fastened and continue to the installation of the spinner assembly.



MOUNTING INSTRUCTIONS:**965 SERIES SPINNER ASSEMBLY:**

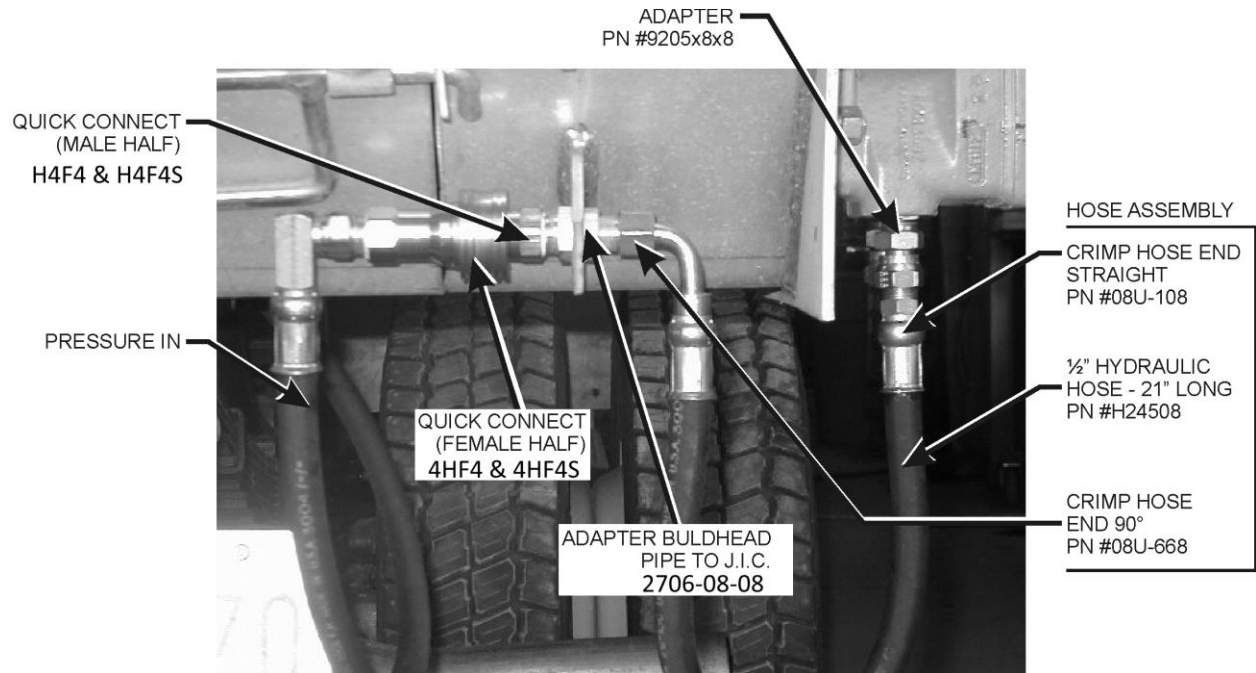
During this process dump body should be in the down position. Verify that all necessary components have been delivered before attempting the mounting procedure. Refer to parts list on page 9.

- 1) Install spinner leveling bracket (C001-00563) underneath vehicle frame and as close as possible to alignment with dump body hinge pins. Refer to installation drawing on page 13.
- 2) Remove upper pivot rod assembly (C001-00464) from spreader and install spinner assembly and reinstall pivot shaft.
- 3) Install the two piece leveling arms by first pinning the long leveling arm (C001-00561) into the L-bracket assembly (C001-00463). Then pin the short leveling arm (C001-00562) through the spinner leveling bracket. Tack weld the two leveling arms together so that the spinner assembly sits in a level position.
- 4) Raise the dump body and check that the spinner assembly remains level throughout the up/down cycle of the dump body. Verify that there is no binding of any parts. If binding occurs, or spinner does not remain level, move leveling arm short to a different hole in the spinner leveling bracket. If necessary, cut the tacks holding the two leveling arms together and reposition to find the best position for the spinner assembly to be level.
- 5) After all adjustments have been made, weld together the two spinner leveling arms. (C001-00561 & C001-00562)



OPERATION:**965 SERIES UNDER TAILGATE SPREADER**

- 1) After installation is completed, check spreader for proper control of auger speed. The auger speed should be able to be varied through the use of a flow control valve which in turn controls the amount of material being discharged to the spinner disk. Auger and spinner speeds should work independently of each other.
- 2) To adjust direction of spread pattern and location, move spinner from left to right or center of discharge hole in trough. Also the deflector on spinner can be moved for spread location.
- 3) After desired spread pattern has been obtained, tighten bolts on lock rings located on pivot shaft to hold spinner assembly in position.



AUGER SAFETY QUICK DISCONNECT ASSEMBLY
MODEL CRE 965 SERIES UNDER TAILGATE AUGER SPREADER

MAINTENANCE:

965 SERIES UNDER TAILGATE AUGER SPREADER

- 1) Lubricate spreader as follows:
 - a. Auger support bearings—every 40 hours, MP type grease.
 - b. Drive sprockets/chains—every 40 hours, SAE #10.
 - c. All hinge/pivot points—every 20 hours, SAE #10.
- 2) Thoroughly clean the spreader and spinner after each use.
- 3) Protective caps should be over quick connect couplers when the equipment is not being used. When the equipment is in service, protective caps and plugs should be locked together so contaminants cannot get into hydraulic components.
- 4) Change the hydraulic filter as recommended by the filters manufacturer to protect not only the components on the equipment, but also the components of your hydraulic system.
- 5) Maintain proper hydraulic oil level in the reservoir of your hydraulic system.

ALWAYS WITHOUT EXCEPTION: USE YOUR CONCORD EQUIPMENT OR ANY EQUIPMENT, IN A SAFE AND CAUTIOUS MANNER.