

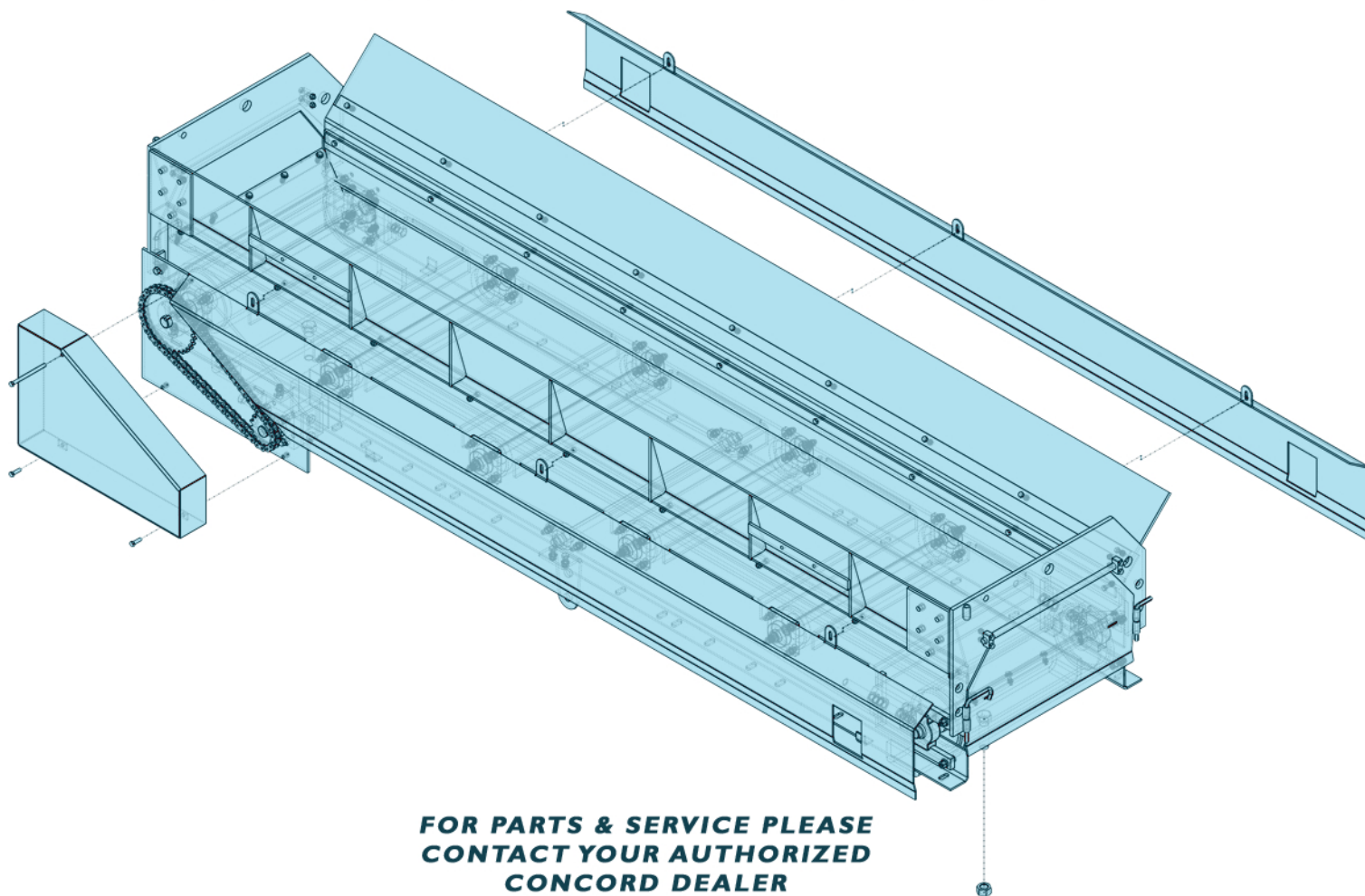


CRE-960

SERIES BERMING MACHINE

OPERATION MANUAL

& PARTS GUIDE



**FOR PARTS & SERVICE PLEASE
CONTACT YOUR AUTHORIZED
CONCORD DEALER**

**CONCORD ROAD EQUIPMENT, MFG
348 CHESTER STREET
PAINESVILLE, OHIO 44119**

**1-800-942 ROAD (7623)
1-440-357-5344**

2018

TABLE OF CONTENTS

Warranty Registration Form.....	2
Warranty	3
Safety Instructions	4
Operating Instructions.....	5-6
Mounting Instructions.....	7-11
Bills of Materials – CRE-960-18B.....	12-13
Hydraulic Hose Assembly – CRE-960-18B.....	14
Bermer Parts Lists – CRE-960-18B	15-18
Cover Assembly	15
Seals Assembly.....	16
Drive Assembly	17
Belt & Roller Assembly.....	18
Bermer Parts Lists – CRE-960-18B	15-18
Bermer Optional Parts Lists	19-28
Rear Lighting Panel – CRE-960-18LG	19
Rear Back Guard Extension – CRE-960-18BG	20
Power Adjustable Discharge Door – CRE-960-18CD	21
48 Inch Fold Up Conveyor Extension – CRE-960-18EX.....	22-24
Self-Contained Portable Power Pack – CRE-960-18HP	25-26
Material Spinner / Sander Assembly	27-28
Steel Spinner – CRE-960-18SP	27-28
Poly Spinner – CRE-960-18PS	27-28
Extreme Duty Spinner – CRE-960-18PSB	27-28
Folding Leg & Winch System – CRE-960-18FL	29
Self-Leveling Mounting System – CRE-960-18SL	10, 14, & 30
60 Inch Adjustable Auger Extension	31

Warranty Registration Record

Please complete the
Warranty Registration Form for your records.

Model Purchased: _____ Serial

In Service Date:

Owners Complete Mailing Address:

Telephone #: _____

Fax #: _____

I have read, understand, and will apply the
contents of the Concord warranty, safety,
operation and maintenance manual.

Owners Signature

Owners Name Printed

CONCORD ROAD EQUIPMENT MFG., INC.
PAINESVILLE, OHIO

WARRANTY

Concord Road Equipment Mfg., Inc. warranties all new CRE products manufactured by this company according to the terms as set forth below, BUT EXCLUDES ANY IMPLIED WARRANTY OF MERCHANTABILITY and there are no warranties which extend beyond the description of the face of this warranty.

Should any Concord Road Equipment product prove defective in material or workmanship, under normal service and use, within a period of one year from date of shipping to the original purchaser, CRE shall repair or replace if the following conditions have been met: the equipment was properly set up, adjusted, used and operated by a trained person. Which on inspection by CRE appears to have been defective in workmanship or material, but the cost of labor in replacement of these parts will be paid by the purchaser and transportation of the equipment to the company's facility will also be the responsibility of the purchaser. This warranty will be effective only if CRE receives written notice of the equipment's defect or failure to perform within thirty (30) days of the expiration of the (1) one year warranty period. This warranty does not cover and will not be effective in the event that any defect or failure to perform occurs as a result of a defect in a part accessory sold by this company but produced by another manufacturer. Such merchandise is warranted only through the manufacturer of the part or accessory. This warranty shall be void where equipment has been subject to misuse, neglect, alteration, accident, or when repaired with parts other than genuine CRE Mfg. Inc.

Concord Road Equipment's Mfg., Inc. obligations under this warranty shall be suspended during any period in which it is prevented from fulfilling its responsibilities by forces beyond our control such as lack of supplies, labor disputes, acts of God and transportation inadequacies. Damages for breach of this warranty shall be limited to replacement of the defective parts as set out herein and shall not include consequential damage for injuries to persons, property or loss of profits occasioned by such defects. No representative or other person is authorized or permitted to make any warranty or assume for this company any liability not strictly in accordance with the foregoing.

This warranty shall extend only to the original purchaser of the equipment from Concord Road Equipment Mfg., Inc.

CONCORD ROAD EQUIPMENT MFG., INC.
960 SERIES UNDER TAILGATE BERMING MACHINE

GENERAL

These 960 series Under tailgate Berming Machines have been designed to, when properly maintained, give you years of reliable and dependable service. As with all equipment, you must familiarize yourself with the operation of the machine BEFORE it is put into service. It is the responsibility of the owner of this machine to make sure that the person or persons to be operating the machine read and understand all safety, operation, and maintenance instructions on the machine and in this manual. Above all, always use good common sense when using your Concord Road Equipment.

SAFETY INSTRUCTIONS:

- 1) Observe and follow all safety precautions to avoid personal injury and/or damage to the machine.
- 2) Read and follow all safety, operation, and maintenance instructions in this manual before using this machine.
- 3) Never perform any maintenance on this machine while it is running. Always make sure that the machine has been disconnected from its hydraulic power source before any maintenance is performed.
- 4) Do not allow riding on any part of this machine.
- 5) Keep all body parts, clothing, etc., away from moving parts.
- 6) Never disconnect hydraulic lines with pressure in them or bodily injury can occur.
- 7) All drive covers, shields and guards should be in proper location and in good working condition before using the machine.
- 8) Make sure that the machine is securely mounted to prime mover before each use.
- 9) Do not attempt to remove any blockage without first turning off hydraulic power source and removing hydraulic hoses from machine.
- 10) Always use your Concord Road Equipment in a safe and courteous manner.

CONCORD ROAD EQUIPMENT MFG., INC.
960 SERIES UNDER TAILGATE BERMING MACHINE

OPERATING INSTRUCTIONS:

- 1) Lift berming machine into mounting position. Make sure all fasteners are properly installed.
- 2) Attach hydraulic hoses to proper hydraulic fittings on vehicle.
- 3) Raise bed and visually inspect machine and vehicle making sure there are NO obstructions (i.e. pintle hooks, fittings, tow hooks, ground clearance, etc.) and that the machine is working freely and securely.
- 4) Tailgate **MUST** be adjusted for control of material going into berming machine. Adjust chains so tailgate does NOT hit extension on machine.
- 5) Check ALL door pins for proper installation.
- 6) To operate machine from inside truck, turn adjustment knob (black) to # 10 position with lever in OFF position and hydraulic valve on machine in desired open position. Operating lever in cab will control machine.
- 7) To operate machine from rear of truck, put ALL cab controls in the ON position. Use valve on rear of berming machine for OFF and ON.
- 8) Direction of belt can be changed by switching quick disconnects located on the lower left center side of machine. (Remember: shut off hydraulic power before switching quick disconnects!)
- 9) Determine which side the material is going to be discharged from. Remove pins from door and put in open position.
- 10) Install chute on side that material is going to be discharged.
- 11) Raise bed slowly discharging material as it is being dumped into the hopper.
- 12) DO NOT load hopper and raise bed without belt moving. Damage to machine could occur.
- 13) When moving from one job to another, keep bed in DOWN position and pins in doors of hopper.
- 14) After daily use, machine **MUST** be cleaned out and washed thoroughly. Allow water to track on rollers to prevent buildup of material dust and particles on the drive and idle rollers.
- 15) This machine is equipped with easily accessible bearings. For service and replacement remove three 5/16" hex nuts from protective covers and lift covers from machine. Service bearings as necessary.

- 16) Adjustments for belt tension are located on idler end, also protected by cover. When adjusting the tension belt, both sides **MUST** be adjusted equally as this also controls tracking of the belt. If belt is moving too close to the side of the machine, tighten that side to move belt toward the opposite side. This **MUST** be done with the belt moving.
- 17) Make sure lock nuts are tightened and replace covers.
- 18) Check vehicle for visibility of ALL Lights with machine installed.
- 19) Check ALL fasteners frequently when machine is in use.
- 20) KEEP HANDS FREE OF ALL MOVING PARTS**

WARNING!

**NEVER OPEN DUMP BODY TAILGATE MORE THAN HALFWAY INTO
BERMING MACHINE HOPPER. POSSIBLE DAMAGE TO MACHINE OR
BODILY INJURY CAN OCCUR!**

USE YOUR CONCORD MACHINE SAFELY

CONCORD ROAD EQUIPMENT MFG., INC.
960 SERIES UNDER TAILGATE BERMING MACHINE

MOUNTING INSTRUCTIONS:

- 1) Before installation of the CRE-960-18B Berming Machine, verify the following parts are included in the CRE960-18SL Self-leveling Mounting Kit:
 - (2) – C001-00693 – Weldment, slide arm pocket
 - (2) – C001-00695 - Offset slide arm
 - (2) – C001-01207 – Frame pad
 - (2) – CSC5-123 – Hex bolt, ½”-13 x 3” Grade 5
 - (2) – NNC5-12 – 1/2” Nyloc nut
 - (12) – CSC5-38114 – Hex bolt, 3/8”-16 x 1-1/4” Grade 5
 - (12) – FW-SAE-38 – 3/8” Flat washer
 - (12) – HNC5-38 – 3/8” Hex nut, 3/8” Grade 5
 - (4) – CSC5-582 – Hex bolt, 5/8”-11 x 2” Grade 5
 - (4) – NNC5-58 – 5/8” Nyloc nut
 - (1) – C001-01218 – Cross support bar
 - (1) – C001-01212 – Push bar, curbside
 - (1) – C001-01215 – Push bar, streetside
 - (1) – C001-01206 – Weldment, a-frame bracket, curbside
 - (1) – C001-01205 – Weldment, a-frame bracket, streetside
 - (2) - CSC8-12 – Hex Bolt, 1”-8 x 2” Grade 8
 - (2) - NNC5-1 – 1” Nyloc nut
- 2) Remove front and rear covers from berming machine.
- 3) Remove conveyor skirt from berming machine.
- 4) Weld slide arm pockets (C001-00693) to dump body rear corner. NOTE: The slide arm pockets must be positioned the same on either side of the dump body.

- 5) Bolt or weld frame pad (C001-01207) to truck frame as close as possible to centerline of dump body hinge point.
- 6) Attach offset slide arm (C001-00695) to berming machine pivot (1" hole in the top of the berming machine end plates) using 1"x2" bolt (CSC8-12) and 1" nut (NNC5-1). Tighten bolts appropriately allowing slide arms to pivot.
- 7) Raise berming machine allowing slide arms to position into slide arm pockets. (NOTE: A 9/16" through hole must be drilled through the slide arm and dump body.) Install 1/2"x3" bolt (CSC5-123) and 1/2" nut (NNC5-12).
- 8) Install lower A-frame to lower flanges of berming machine. (Note: Lower A-frame brackets must be parallel and in alignment to frame pads). Transfer holes from A-frame (curbside & streetside) to lower flanges of berming machine and drill to 3/8". Re-install A-frames (curbside & streetside) using 3/8" x 1-1/4 bolts (CSC5-38114), 3/8" washer (FW-SAE-38), and 3/8" nut (NNC5-38).
- 9) Install push bars (C001-01212 & C001-01215) to frame pads using 5/8"x2" bolts (CSC5-582), and 5/8" nuts (NNC5-58) with the angle on the bottom and facing outward. With the berming machine in a level position, raise push arms up to lower A-frames until the center 5/8" hole lines up to the center of the A-frame. Transfer and drill a 5/8" hole in push arms and cut off any excess angle. Install 5/8" x 2" bolt (CSC5-582) and 5/8" nut (NNC5-58).
- 10) Install A-frame cross support bar (C001-01218) using 3/8" x 1-1/4 bolts (CSC5-38114), 3/8" washer (FW-SAE-38), and 3/8" nut (NNC5-38). Trim braces as required.
- 11) Install body to conveyor sealing skirt. Trim sealing skirt as necessary to fit contour of dump body apron.
- 12) Verify all pivot bolts are tightened securely while allowing brackets to pivot.
- 13) Raise dump body slowly while making sure no obstacles/obstructions (i.e; pintle hooks, hose connections) are binding or in the path of the machine.
- 14) Attached hydraulic hoses:
 - Pressure hose connects to the pressure side of the trucks hydraulic system.
 - Return hose connects to tee underneath the berming machine, and then to the return side of the truck hydraulics system return line.

CONCORD ROAD EQUIPMENT MFG., INC.
960 SERIES UNDER TAILGATE BERMING MACHINE

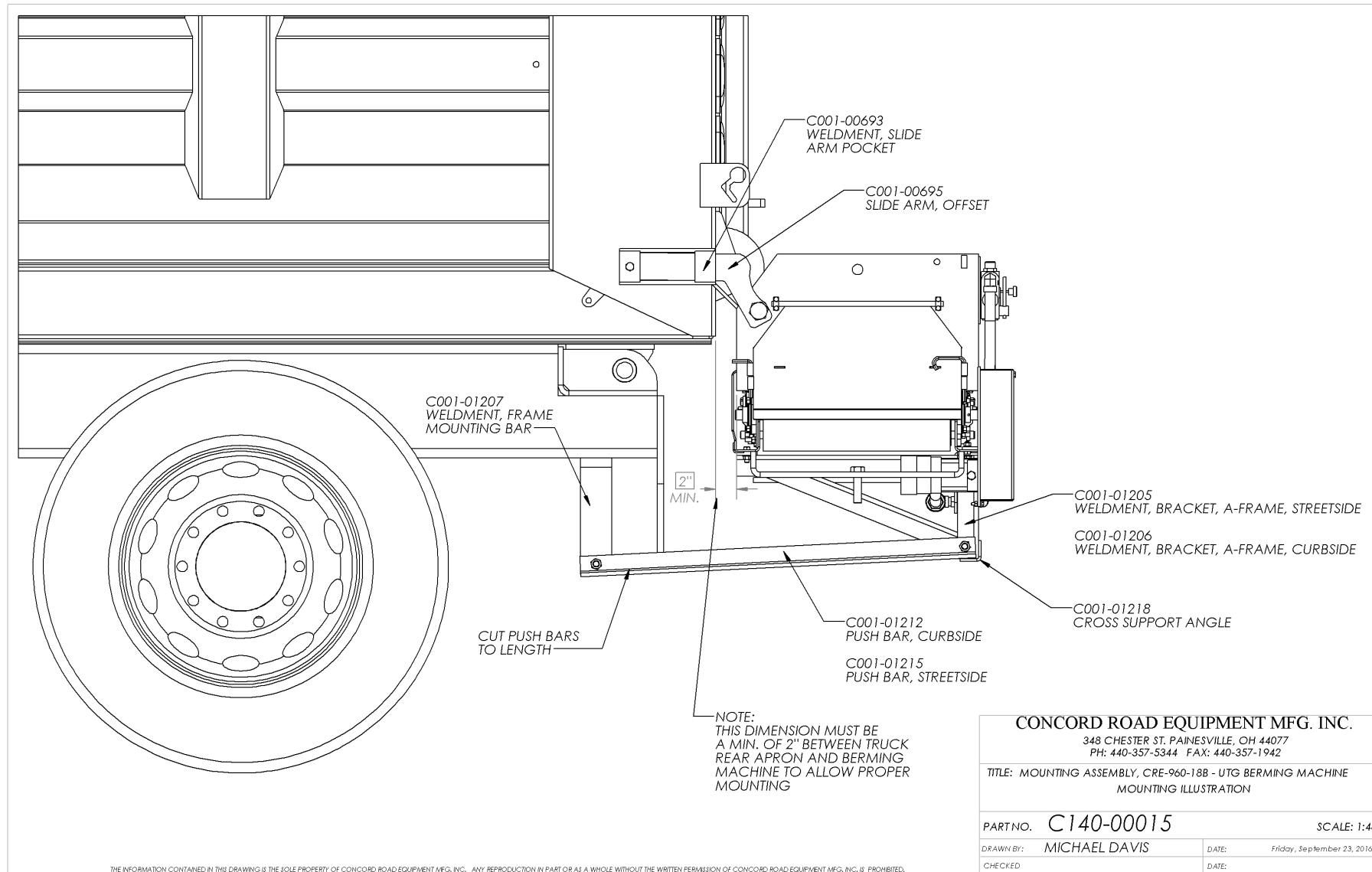
OPTIONAL MOUNTING INSTRUCTIONS:

- 1) Fasten the body side mount plates to the lower dump body rub rail at approximately twelve (12") from the rear of the tailgate. Use ½"x3" bolt (CSC5-123) and ½" nut (NNC5-12)
- 2) Install the take-up adjusting bolts through the body side mount plates. NOTE: The chain hook must be facing the rear of the vehicle.
- 3) Install the chain latch assembly to the berming machine using 1"x2" bolt (CSC8-12) and 1" nut (NNC5-1). NOTE: Make sure that the longest chain is in the upward direction.
- 4) When the berming machine folding leg assemblies are in the standing position, carefully back the vehicle up to the berming machine. Raise the dump body so that the front rubber sealing skirt and upper berming machine flange is in direct contact with the dump body spreader apron.
- 5) Place the tailgate hooks over the top of the dump body tailgate. Take the upper chain of the chain latch assembly and install the upper chain through the top dump body banjo eye so that the machine will raise off the ground when the dump body is lowered.
- 6) Lower the dump body and fold the berming machine legs inward to the working position.
- 7) Place the lower chain of the chain latch assembly into the slip hook located on the take-up adjusting bolts. Tighten until the berming machine is securely against the dump body spreader apron.
- 8) NOTE: The berming machine MUST not swing away from the dump body when the dump body is raised.

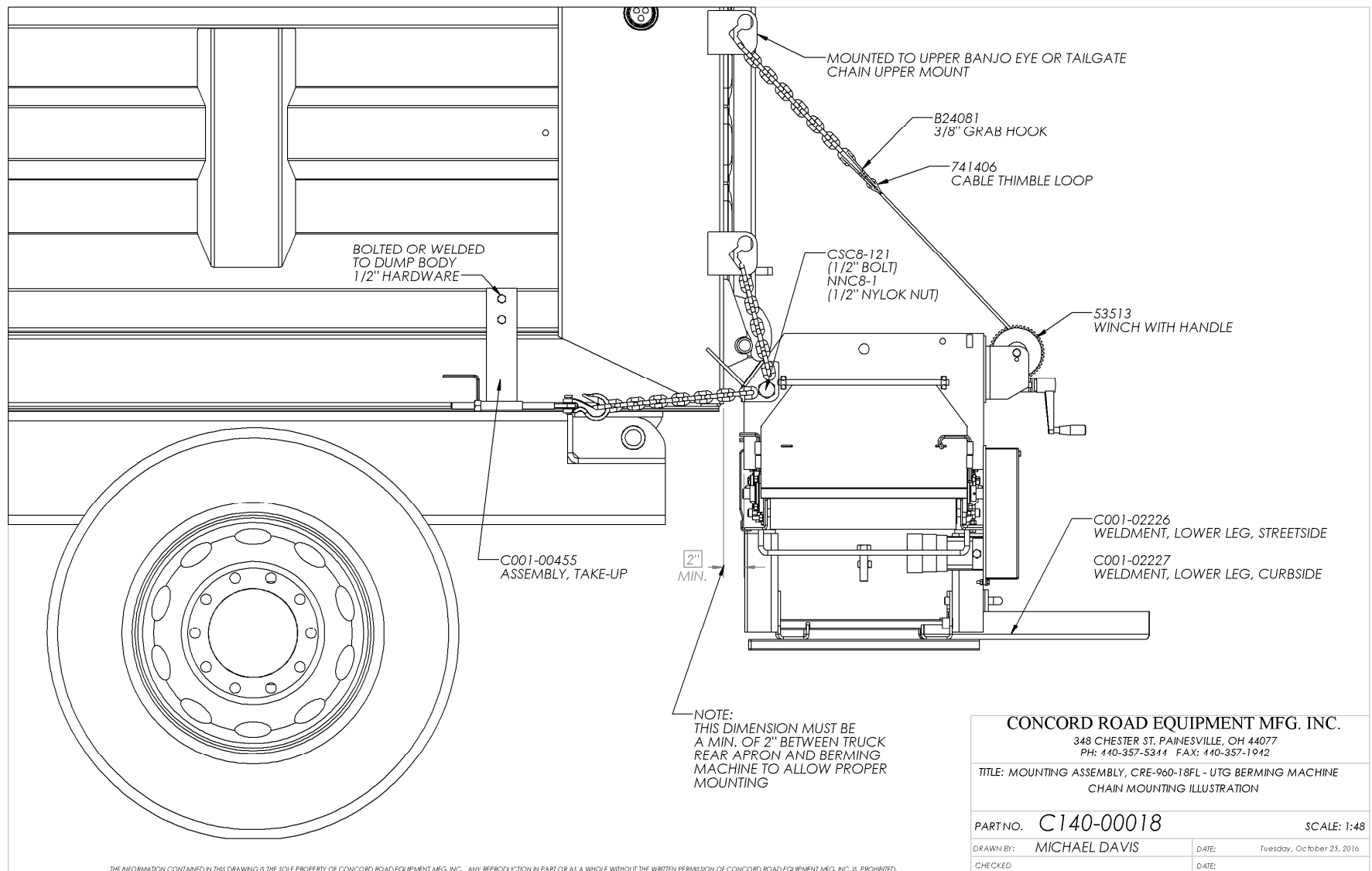
OPTIONAL DISMOUNTING INSTRUCTIONS:

- 9) Reverse the above steps 4 through 7 to remove the berming machine from the dump body.

960 SERIES UNDER TAILGATE BERMING MACHINE



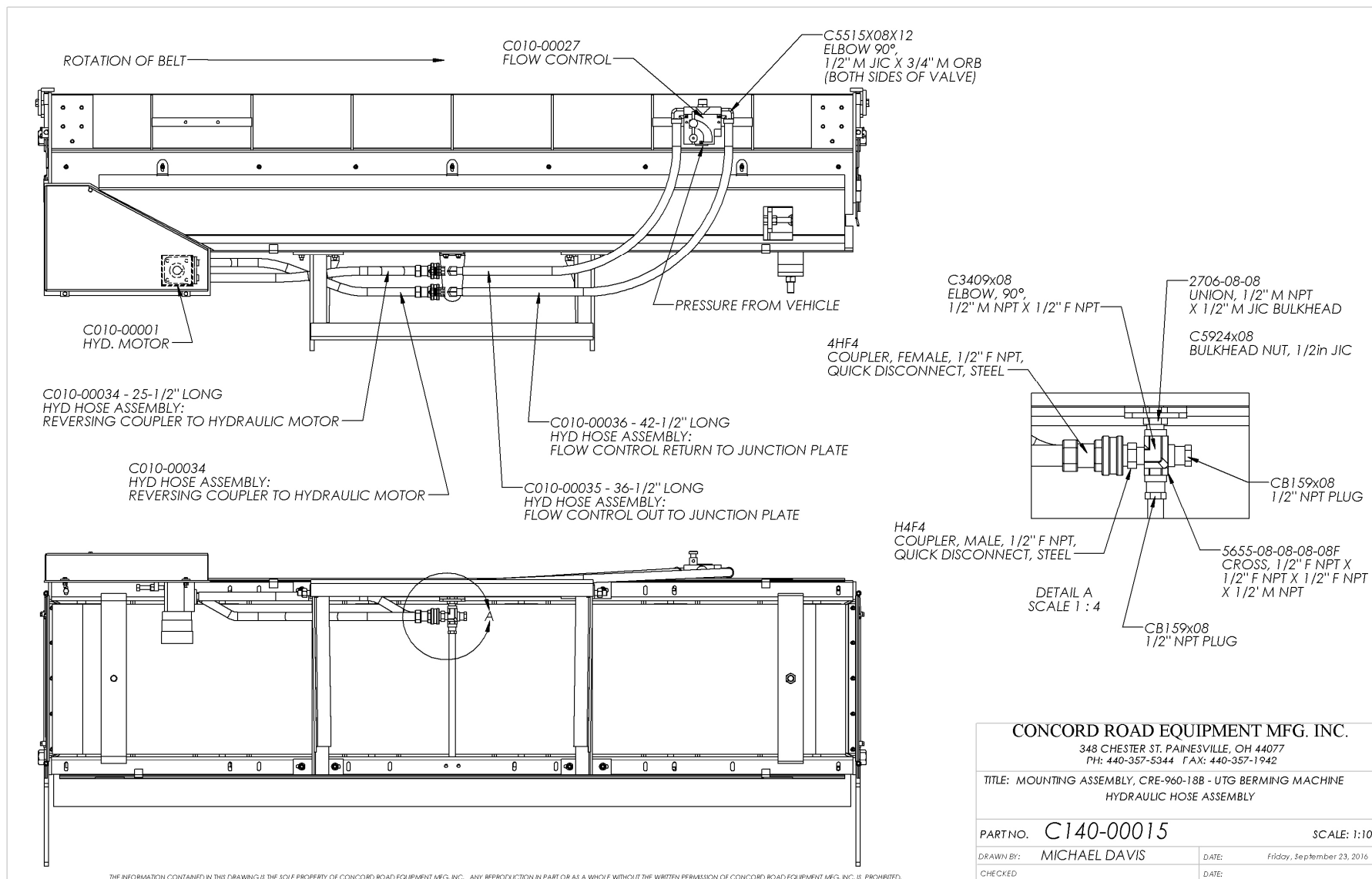
960 SERIES UNDER TAILGATE BERMING MACHINE



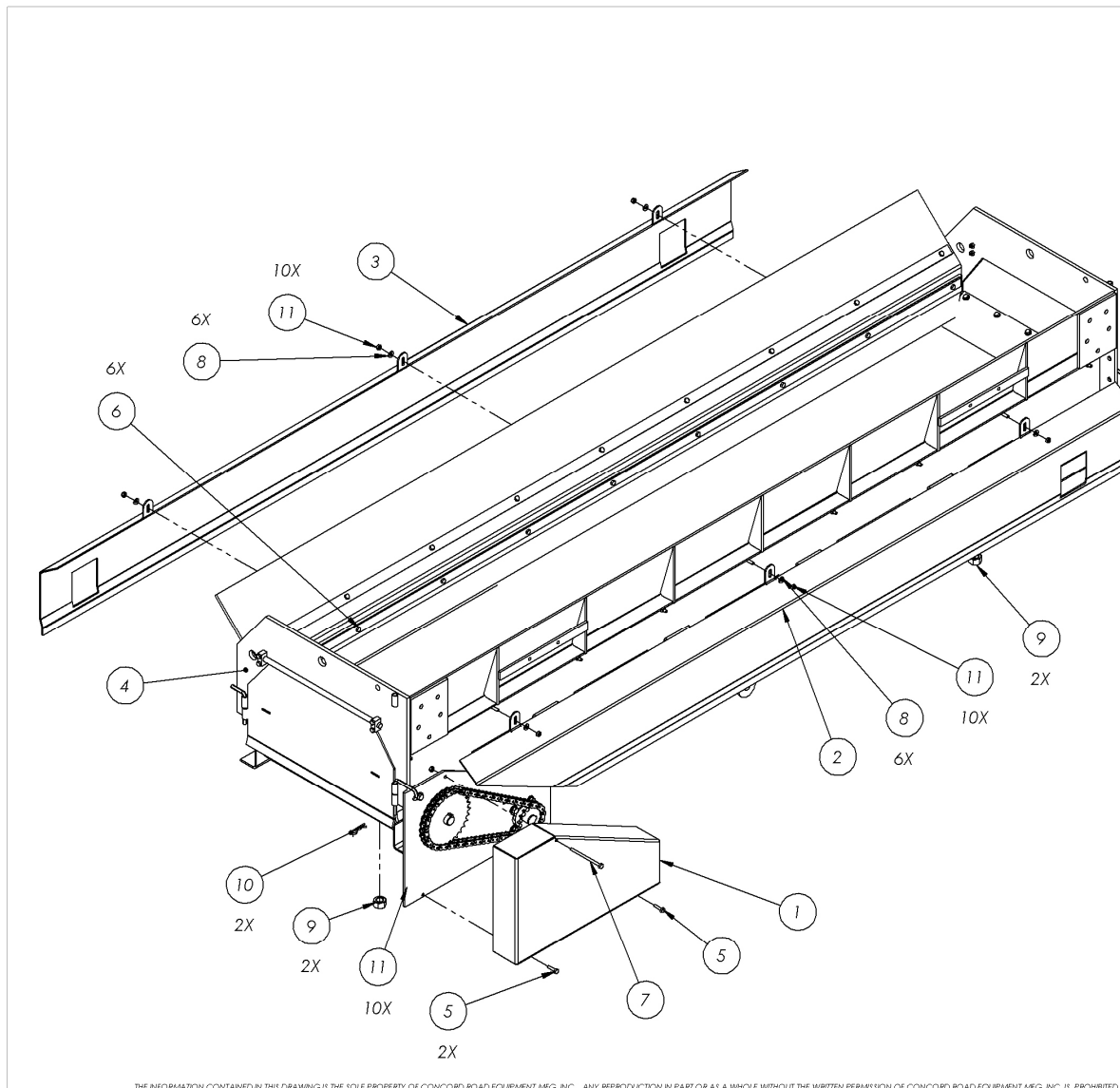
MILD STEEL CONSTRUCTION			
#	PART NUMBER	DESCRIPTION	QTY
1	C001-00425	SPINNER HUB PLATE	1
2	C001-00426	SPINNER DISK	1
3	C001-00431	SPINNER FIN	6
4	C001-00443	SPINNER MOUNTING WELDMENT	1
5	C001-00444	SPINNER DEFLECTOR ASSEMBLY	1
6	C001-00449	SPINNER DOOR MAIN ASSEMBLY - CRE-960-18SP	1
7	C001-00579	WELDMENT, DRIVE ADJUSTMENT PLATE	1
8	C001-00587	SHAFT, LOWER IDLER, 3/4"	1
9	C001-00694	SLIDE ARM	2
10	C001-00695	SLIDE ARM, OFFSET	2
11	C001-01133	WELDMENT, DRIVE COVER	1
12	C001-01134	WELDMENT, DRIVE PLATE	1
13	C001-01135	ASSEMBLY, DOOR	2
14	C001-01136	WELDMENT, CHUTE	1
15	C001-01142	WELDMENT, MOUNTING BRACKET, CHUTE	1
16	C001-01147	BACK BEARING COVER	1
17	C001-01164	COVER, FRONT BEARING	1
18	C001-01166	HOPPER SKIRT HOLD DOWN	3
19	C001-01166	HOPPER SKIRT HOLD DOWN	2
20	C001-01175	OFFSET PIN, DOOR	2
21	C001-01189	STRAIGHT PIN, DOOR	2
22	C001-01205	WELDMENT, BRACKET, A-FRAME, STREET SIDE	1
23	C001-01206	WELDMENT, BRACKET, A-FRAME, CURB SIDE	1
24	C001-01207	WELDMENT, FRAME MOUNTING BAR	2
25	C001-01212	PUSH BAR, CURB SIDE	1
26	C001-01215	PUSH BAR, STREET SIDE	1
27	C001-01218	CROSS SUPPORT ANGLE	1
28	C001-06424	WELDMENT, BERMER - HOPPER	1
30	C010-00001	HYDRAULIC MOTOR, 4 BOLT, 17.9 CUBIC INCH DISPLACEMENT, ROLLER STATOR	1
31	C010-00005	HYDRAULIC MOTOR, 4 BOLT, 4.6 CUBIC INCH DISPLACEMENT	1
32	C010-00027	FLOW CONTROL	1
33	C050-00006	ASSEMBLY, TAKE-UP BEARING	2
34	C050-00008	BEARING, Ø3/4" BORE, 2 BOLT	2
35	C050-00009	BEARING, Ø1" BORE, 4 BOLT	2
36	C050-00015	SPROCKET, 15 TOOTH, Ø1" BORE, #50 CHAIN 5/8" PITCH	1
37	C050-00017	BEARING, Ø3/4" BORE, 4 BOLT	12
38	C050-00020	CONVEYOR BELT, BERMER 96018	1
39	C050-00026	WELDMENT, Ø6" DRIVE ROLLER	1
40	C050-00027	WELDMENT, Ø6" TAKE-UP ROLLER	2
41	C050-00043	ROLLER CHAIN, #50 (OLD CRE# 1000204) 60 LINKS LONG	1
42	C050-00048	VERTICAL PLATE	1
43	C060-00047	BODY SEAL	1
44	C060-00048	INNER HOPPER SKIRT	2
45	C060-00049	DOOR SEALING SKIRT	2
46	C060-00050	HINGE BLOCK, DOOR	2
47	CSC5-123	HEX BOLT, 1/2in - 13 x 3 LONG, GRADE 5	2
48	CSC5-141	HEX BOLT, 1/4in - 20 x 1 LONG, GRADE 5	25
49	CSC5-14112	HEX BOLT, 1/4in - 20 x 1-1/2 LONG, GRADE 5	8
50	CSC5-144	HEX BOLT, 1/4in - 20 x 4 LONG, GRADE 5	2
51	CSC5-381	HEX BOLT, 3/8in-16 - 4 x 1 LONG, GRADE 5	2
52	CSC5-38114	HEX BOLT, 3/8in - 16 x 1-1/4 LONG, GRADE 5	16
53	CSC5-5161	HEX BOLT, 5/16in - 18 x 1 LONG, GRADE 5	16
54	CSC5-582	HEX BOLT, 5/8in - 11 x 2 LONG, GRADE 5	4
55	CSC8-12	HEX BOLT, 1in - 8 x 2 LONG, GRADE 8	1
56	FWSAE-14	FLAT WASHER, SAE 1/4"	5
57	FWSAE-516	FLAT WASHER, SAE 5/16"	12
58	FWSAE-38	FLAT WASHER, SAE 3/4"	12
59	HNC5-12	HEX NUT, 1/2-13, GRADE 5	1
60	HNC5-14	HEX NUT, 1/4-20, GRADE 5	31
61	HNC5-38	HEX NUT, 3/8-16, GRADE 5	58
62	HNC5-516	HEX NUT, 5/16", GRADE 5	12
63	HNC-1	HEX NUT, 1"	1
64	NNC-14	NYLOCK NUT, 1/4-20, STEEL	5
65	NNC-34	NYLOCK NUT, 3/4-10, STEEL	1
66	NNC-58	NYLOCK NUT, 5/8-16, STEEL	4
67	SLW-14	SPLIT LOCK WASHER, 1/4"	3

STAINLESS STEEL CONSTRUCTION			
#	PART NUMBER	DESCRIPTION	QTY
1	C001-00425S	SPINNER HUB PLATE	1
2	C001-00426S	SPINNER DISK	1
3	C001-00431S	SPINNER FIN	6
4	C001-00443S	SPINNER MOUNTING WELDMENT	1
5	C001-00444S	SPINNER DEFLECTOR ASSEMBLY	1
6	C001-00449S	SPINNER DOOR MAIN ASSEMBLY - CRE-960-18SP	1
7	C001-00579S	WELDMENT, DRIVE ADJUSTMENT PLATE	1
8	C001-00587S	SHAFT, LOWER IDLER, 3/4"	1
9	C001-00694S	SLIDE ARM	2
10	C001-00695S	SLIDE ARM, OFFSET	2
11	C001-01133S	WELDMENT, DRIVE COVER	1
12	C001-01134S	WELDMENT, DRIVE PLATE	1
13	C001-01135S	ASSEMBLY, DOOR	2
14	C001-01136S	WELDMENT, CHUTE	1
15	C001-01142S	WELDMENT, MOUNTING BRACKET, CHUTE	1
16	C001-01147S	BACK BEARING COVER	1
17	C001-01164S	COVER, FRONT BEARING	1
18	C001-01166S	HOPPER SKIRT HOLD DOWN	3
19	C001-01166S	HOPPER SKIRT HOLD DOWN	2
20	C001-01175S	OFFSET PIN, DOOR	2
21	C001-01189S	STRAIGHT PIN, DOOR	2
22	C001-01205S	WELDMENT, BRACKET, A-FRAME, STREET SIDE	1
23	C001-01206S	WELDMENT, BRACKET, A-FRAME, CURB SIDE	1
24	C001-01207S	WELDMENT, FRAME MOUNTING BAR	2
25	C001-01212S	PUSH BAR, CURB SIDE	1
26	C001-01215S	PUSH BAR, STREET SIDE	1
27	C001-01218S	CROSS SUPPORT ANGLE	1
28	C001-06424S	WELDMENT, BERMER - HOPPER	1
30	C010-00001	HYDRAULIC MOTOR, 4 BOLT, 17.9 CUBIC INCH DISPLACEMENT, ROLLER STATOR	1
31	C010-00005	HYDRAULIC MOTOR, 4 BOLT, 4.6 CUBIC INCH DISPLACEMENT	1
32	C010-00027S	FLOW CONTROL	1
33	C050-00006	ASSEMBLY, TAKE-UP BEARING	2
34	C050-00008	BEARING, Ø3/4" BORE, 2 BOLT	2
35	C050-00009	BEARING, Ø1" BORE, 4 BOLT	2
36	C050-00015	SPROCKET, 15 TOOTH, Ø1" BORE, #50 CHAIN 5/8" PITCH	1
37	C050-00017	BEARING, Ø3/4" BORE, 4 BOLT	12
38	C050-00020	CONVEYOR BELT, BERMER 96018	1
39	C050-00026S	WELDMENT, Ø6" DRIVE ROLLER	1
40	C050-00027S	WELDMENT, Ø6" TAKE-UP ROLLER	2
41	C050-00043	ROLLER CHAIN, #50 (OLD CRE# 1000204) 60 LINKS LONG	1
42	C050-00048S	VERTICAL PLATE	1
43	C060-00047	BODY SEAL	1
44	C060-00048	INNER HOPPER SKIRT	2
45	C060-00049	DOOR SEALING SKIRT	2
46	C060-00050S	HINGE BLOCK, DOOR	2
47	CSCS-123	HEX BOLT, 1/2in - 13 x 3 LONG, STAINLESS	2
48	CSCS-141	HEX BOLT, 1/4in - 20 x 1 LONG, STAINLESS	25
49	CSCS-14112	HEX BOLT, 1/4in - 20 x 1-1/2 LONG, STAINLESS	8
50	CSCS-144	HEX BOLT, 1/4in - 20 x 4 LONG, STAINLESS	2
51	CSCS-381	HEX BOLT, 3/8in-16 - 4 x 1 LONG, STAINLESS	2
52	CSCS-38114	HEX BOLT, 3/8in - 16 x 1-1/4 LONG, STAINLESS	16
53	CSCS-5161	HEX BOLT, 5/16in - 18 x 1 LONG, STAINLESS	16
54	CSCS-582	HEX BOLT, 5/8in - 11 x 2 LONG, STAINLESS	4
55	CSCS-12	HEX BOLT, 1in - 8 x 2 LONG, STAINLESS	1
56	FWSS-14	FLAT WASHER, SAE 1/4", STAINLESS	5
57	FWSS-516	FLAT WASHER, SAE, 5/16", STAINLESS	12
58	FWSS-38	FLAT WASHER, SAE, 3/4", STAINLESS	12
59	HNCS-12	HEX NUT, 1/2-13, STAINLESS	1
60	HNCS-14	HEX NUT, 1/4-20, STAINLESS	31
61	HNCS-38	HEX NUT, 3/8-16, STAINLESS	58
62	HNCS-516	HEX NUT, 5/16", STAINLESS	12
63	HNC8-1	HEX NUT, 1", GRADE 8	1
64	NNCS-14	NYLOCK NUT, 1/4-20, STAINLESS	5
65	NNCS-34	NYLOCK NUT, 3/4-10, STAINLESS	1
66	NNCS-58	NYLOCK NUT, 5/8-16, STAINLESS	4
67	LWSS-14	SPLIT LOCK WASHER, 1/4", STAINLESS	3

960 SERIES UNDER TAILGATE BERMING MACHINE



960 SERIES UNDER TAILGATE BERMING MACHINE



ITEM NO.	PART NUMBER	Description	QTY.
1	C001-01133	WELDMENT, DRIVE COVER	1
2	C001-01147	BACK BEARING COVER	1
3	C001-01164	FRONT BEARING COVER	1
4	C001-06421	ASSEMBLY, BERMER 96018 - SEALS & CHUTE	1
5	CSC5-141	HEX BOLT, 1/4in - 20 x 1 LONG, GRADE 5	2
6	CSC5-14112	HEX BOLT, 1/4in - 20 x 1-1/2 LONG, GRADE 5	6
7	CSC5-144	HEX BOLT, 1/4in - 20 x 4 LONG, GRADE 5	1
8	FWSAE-14	1/4SAE WASHER, STEEL	6
9	HNC5-34	HEX NUT, 3/4-16	2
10	HPC-18X11516	1/2" to 3/4"	2
11	NNC5-14	NYLOCK NUT, 1/4"	10

CONCORD ROAD EQUIPMENT MFG. INC.

348 CHESTER ST. PAINESVILLE, OH 44077
PH: 440-357-5344 FAX: 440-357-1942

TITLE: MOUNTING ASSEMBLY, CRE-960-18B - UTG BERMING MACHINE
BERMER COVER(S) ASSEMBLY

PART NO. **C140-00015**

SCALE: 1:48

DRAWN BY: **MICHAEL DAVIS**

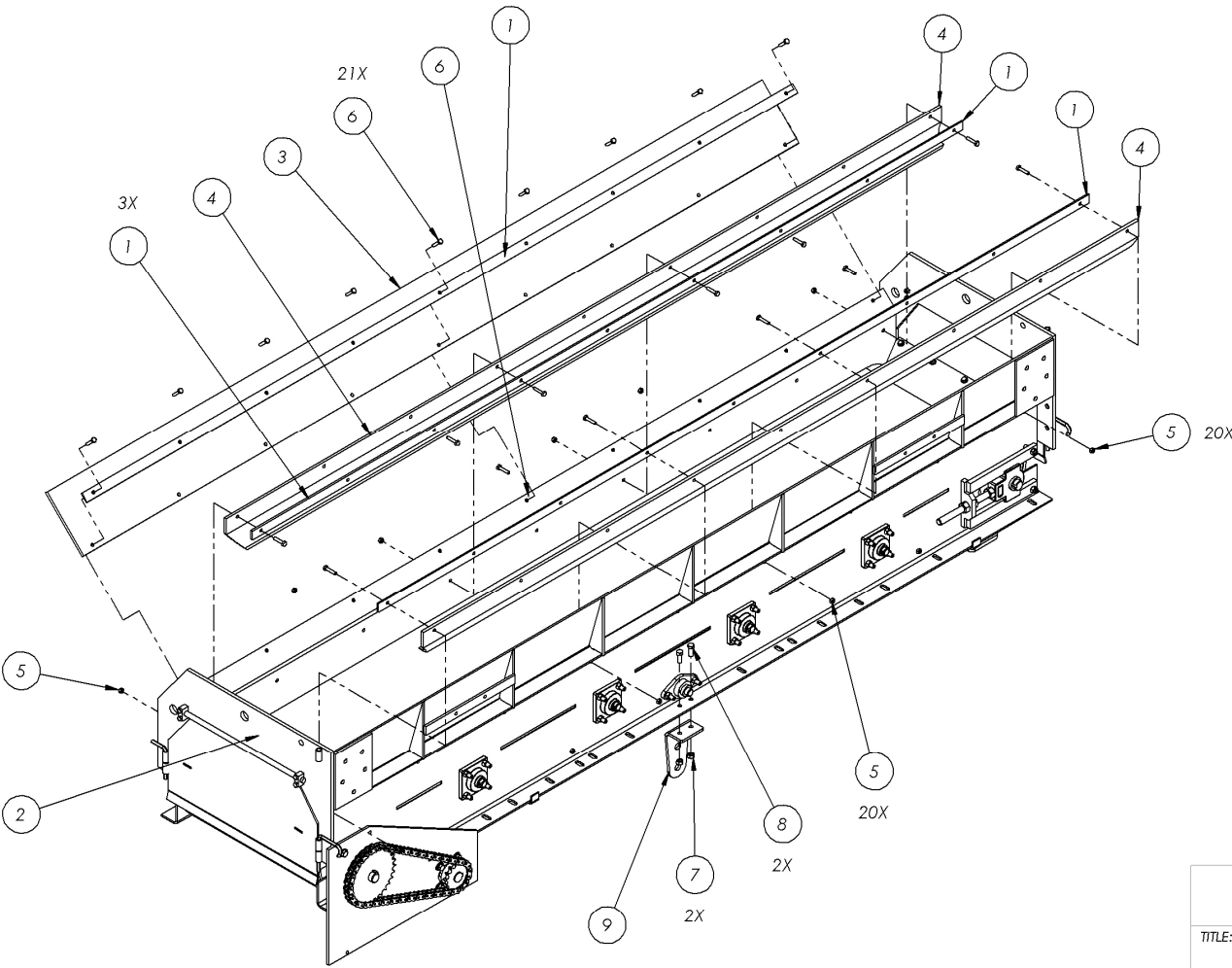
DATE: Friday, March 17, 2017

CHECKED BY:

DATE:

THE INFORMATION CONTAINED IN THIS DRAWING IS THE SOLE PROPERTY OF CONCORD ROAD EQUIPMENT MFG. INC.. ANY REPRODUCTION IN PART OR AS A WHOLE WITHOUT THE WRITTEN PERMISSION OF CONCORD ROAD EQUIPMENT MFG. INC. IS PROHIBITED.

960 SERIES UNDER TAILGATE BERMING MACHINE

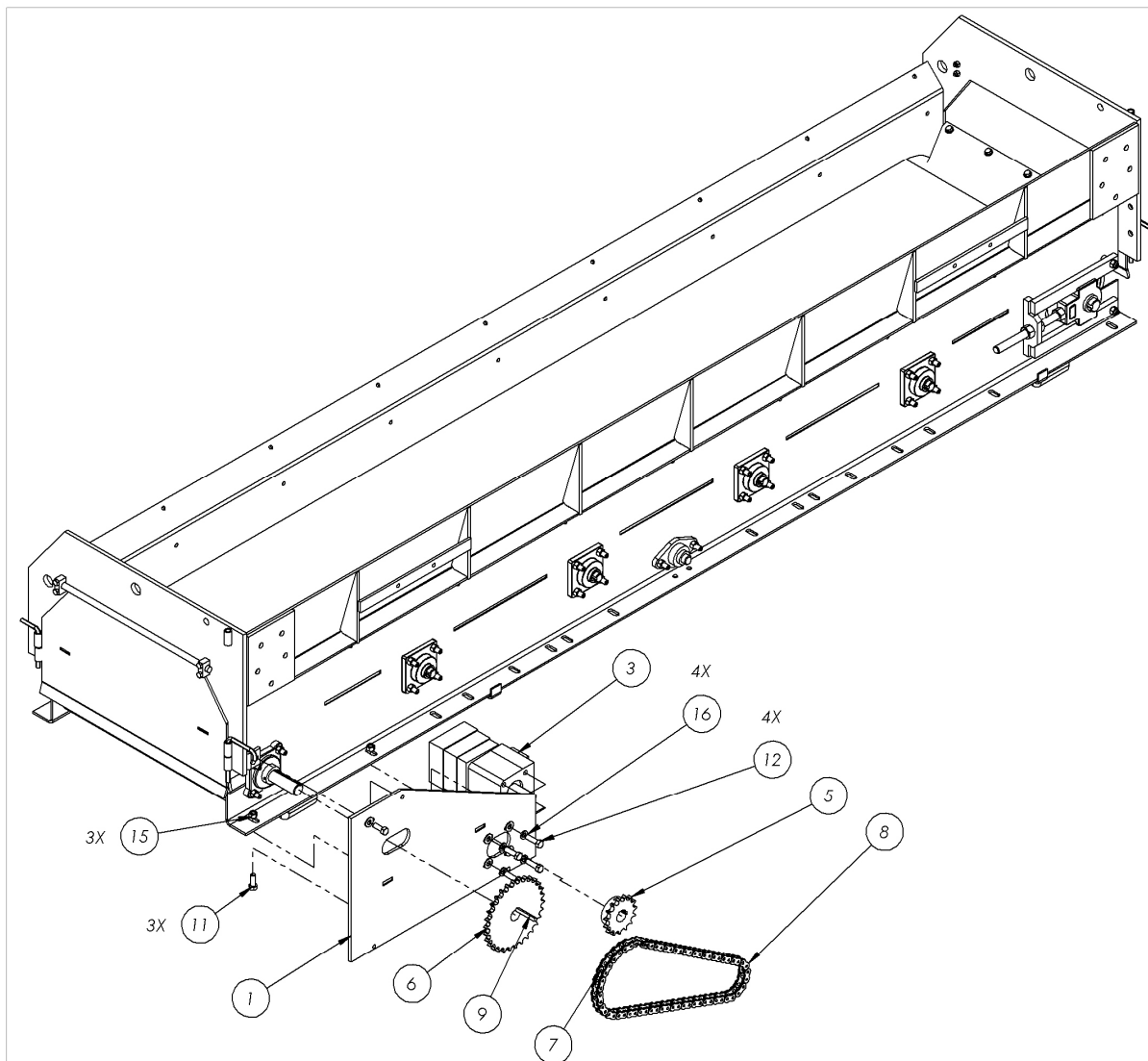


ITEM NO.	PART NUMBER	Description	QTY.
1	C001-01166	HOLD-DOWN, BODY SEAL	3
2	C001-06422	ASSEMBLY, BERMER 96018 - DRIVE SYSTEM	1
3	C060-00047	BERMER BODY SEAL	1
4	C060-00048	BERMER INNER HOPPER SKIRT	2
5	NNC5-14	NYLOCK NUT, 1/4"	20
6	CSC5-14114	HEX BOLT, 1/4in - 20 x 1-1/4 LONG, GRADE 5	21
7	NNC5-38	NYLOCK NUT, 3/8-16	2
8	CSC5-381	HEX BOLT, 3/8in - 16 x 1 LONG, GRADE 5	2
9	C001-01167	HOSE SUPPORT DETAIL	1

CONCORD ROAD EQUIPMENT MFG. INC.	
348 CHESTER ST. PAINESVILLE, OH 44077	
PH: 440-357-5344 FAX: 440-357-1942	
TITLE: MOUNTING ASSEMBLY, CRE-960-188 - UTG BERMING MACHINE	
BERMER SEAL(S) ASSEMBLY	
PART NO.	C140-00015
SCALE: 1:48	
DRAWN BY:	MICHAEL DAVIS
CHECKED BY:	
DATE:	Friday, March 17, 2017
DATE:	

THE INFORMATION CONTAINED IN THIS DRAWING IS THE SOLE PROPERTY OF CONCORD ROAD EQUIPMENT MFG. INC.. ANY REPRODUCTION IN PART OR AS A WHOLE WITHOUT THE WRITTEN PERMISSION OF CONCORD ROAD EQUIPMENT MFG. INC. IS PROHIBITED.

960 SERIES UNDER TAILGATE BERMING MACHINE



ITEM NO.	PART NUMBER	Description	QTY.
1	C001-01134	WELDMENT, DRIVE PLATE	1
2	C001-06423	ASSEMBLY, BERMER 96018 - HOPPER ROLLERS, BEARINGS, & BELT	1
3	C010-00001	HYDRAULIC MOTOR, 4 BOLT, 17.9 CUBIC INCH DISPLACEMENT, ROLLER STATOR	1
4	C050-00013	MASTER LINK, #50 CHAIN	1
5	C050-00015	SPROCKET, 15T, #50	1
6	C050-00019	SPROCKET, 30 TOOTH, Ø1" BORE, #50 CHAIN 5/8" PITCH	1
7	C050-00043A	DRIVE CHAIN, BERMER - INNER LINK	31
8	C050-00043C	DRIVE CHAIN, BERMER - OUTER LINK	31
9	C060-00040	1/4" x 1/4" x 1-1/8" KEY	1
10	CSC5-123FT	HEX BOLT, 1/2in - 13 x 3 LONG, GRADE 5, FULL THREAD	1
11	CSC5-381	HEX BOLT, 3/8in - 16 x 1 LONG, GRADE 5	3
12	CSC5-38114	HEX BOLT, 3/8in - 16 x 1-1/4 LONG, GRADE 5	4
13	FWSAE-38	3/8SAE WASHER, STEEL	5
14	HNC5-12	HEX NUT, 1/2-20	1
15	NNC5-38	NYLOCK NUT, 3/8-16	3
16	SLW-38	3/8 SPLIT LOCK WASHER, STEEL	4

CONCORD ROAD EQUIPMENT MFG. INC.

348 CHESTER ST. PAINESVILLE, OH 44077
PH: 440-357-5344 FAX: 440-357-1942

TITLE: MOUNTING ASSEMBLY, CRE-960-188 - UTG BERMING MACHINE
BERMER DRIVE ASSEMBLY

PARTNO. **C140-00015**

SCALE: 1:48

DRAWN BY: **MICHAEL DAVIS**

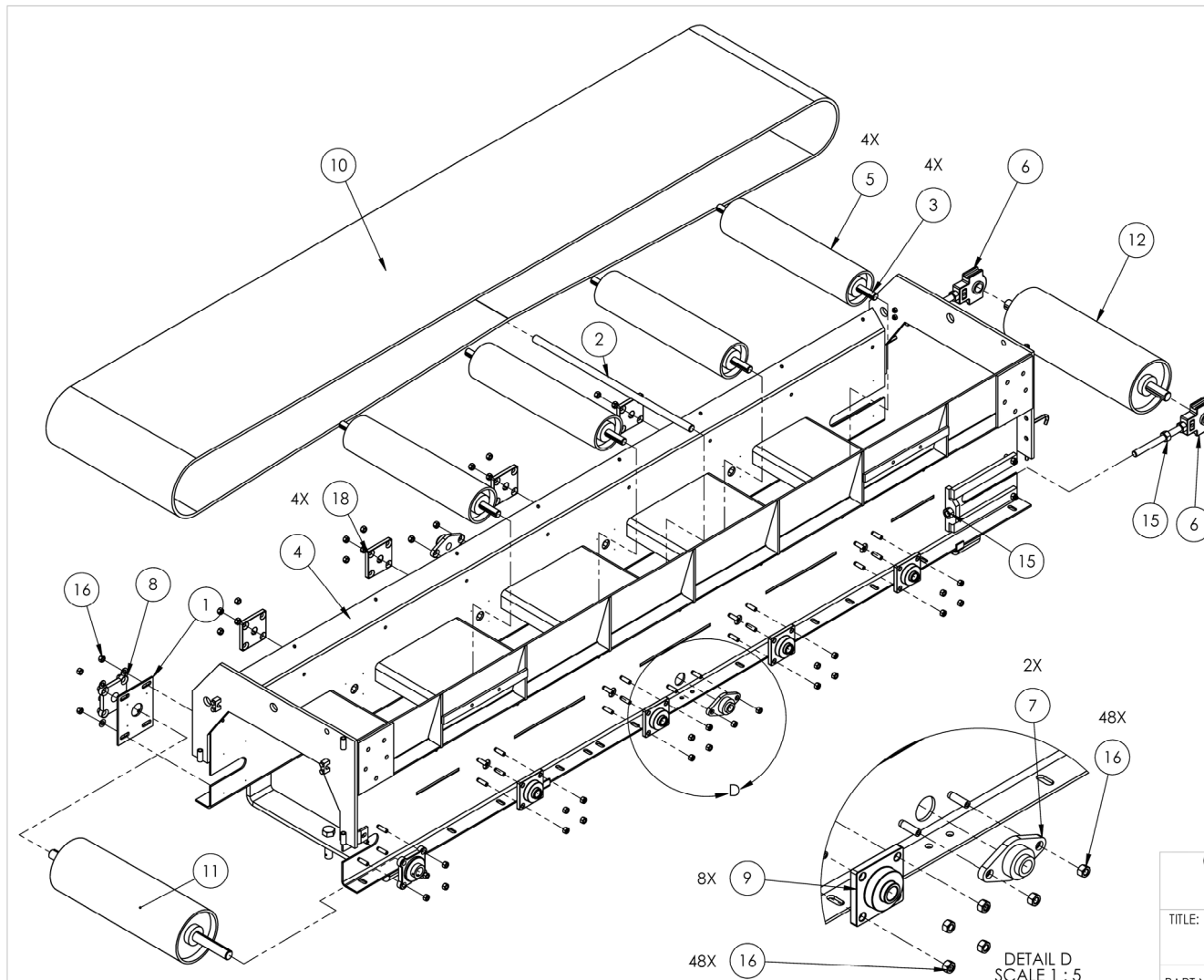
DATE: Friday, March 17, 2017

CHECKED BY:

DATE:

THE INFORMATION CONTAINED IN THIS DRAWING IS THE SOLE PROPERTY OF CONCORD ROAD EQUIPMENT MFG. INC.. ANY REPRODUCTION IN PART OR AS A WHOLE WITHOUT THE WRITTEN PERMISSION OF CONCORD ROAD EQUIPMENT MFG. INC. IS PROHIBITED.

960 SERIES UNDER TAILGATE BERMING MACHINE



ITEM NO.	PART NUMBER	Description	QTY.
1	C001-00579	WELDMENT, DRIVE ADJUSTMENT PLATE	1
2	C001-00587	3/4" LOWER IDLER SHAFT	1
3	C001-01186	SHAFT, IDLER ROLLER, 3/4"	4
4	C001-06424	WELDMENT, BERMER 96018 - HOPPER	1
5	C050-00004	4" IDLER ROLLER	4
6	C050-00006	ASSEMBLY TAKE UP BEARING	2
7	C050-00008	BEARING, Ø3/4" BORE, 2 BOLT	2
8	C050-00009	1" 4-BOLT FLANGE BEARING	2
9	C050-00017	3/4" 4-BOLT FLANGE BEARING	8
10	C050-00020	CONVEYOR BELT, BERMER 96018	1
11	C050-00026	WELDMENT, 6" DRIVE ROLLER	1
12	C050-00027	WELDMENT, 6" TAKE UP ROLLER	1
13	CSC5-123FT	HEX BOLT, 1/2in - 13 x 3 LONG, GRADE 5, FULL THREAD	1
14	HNC5-12	HEX NUT, 1/2-20	1
15	HNC5-58	HEX NUT, 5/8-18	4
16	NNC5-38	NYLOCK NUT, 3/8-16	48
17	FWSAE-38	3/8SAE WASHER, STEEL	4
18	C060-00146	1/4" x 1/4" x 1-1/8" KEY	4

CONCORD ROAD EQUIPMENT MFG. INC.

348 CHESTER ST. PAINESVILLE, OH 44077
PH: 440-357-5344 FAX: 440-357-1942

TITLE: MOUNTING ASSEMBLY, CRE-960-18B - UTG BERMING MACHINE
BERMER ROLLER & BELT ASSEMBLY

PART NO. **C140-00015**

SCALE: 1:48

DRAWN BY: **MICHAEL DAVIS**

DATE: Tuesday, April 3, 2018

CHECKED BY:

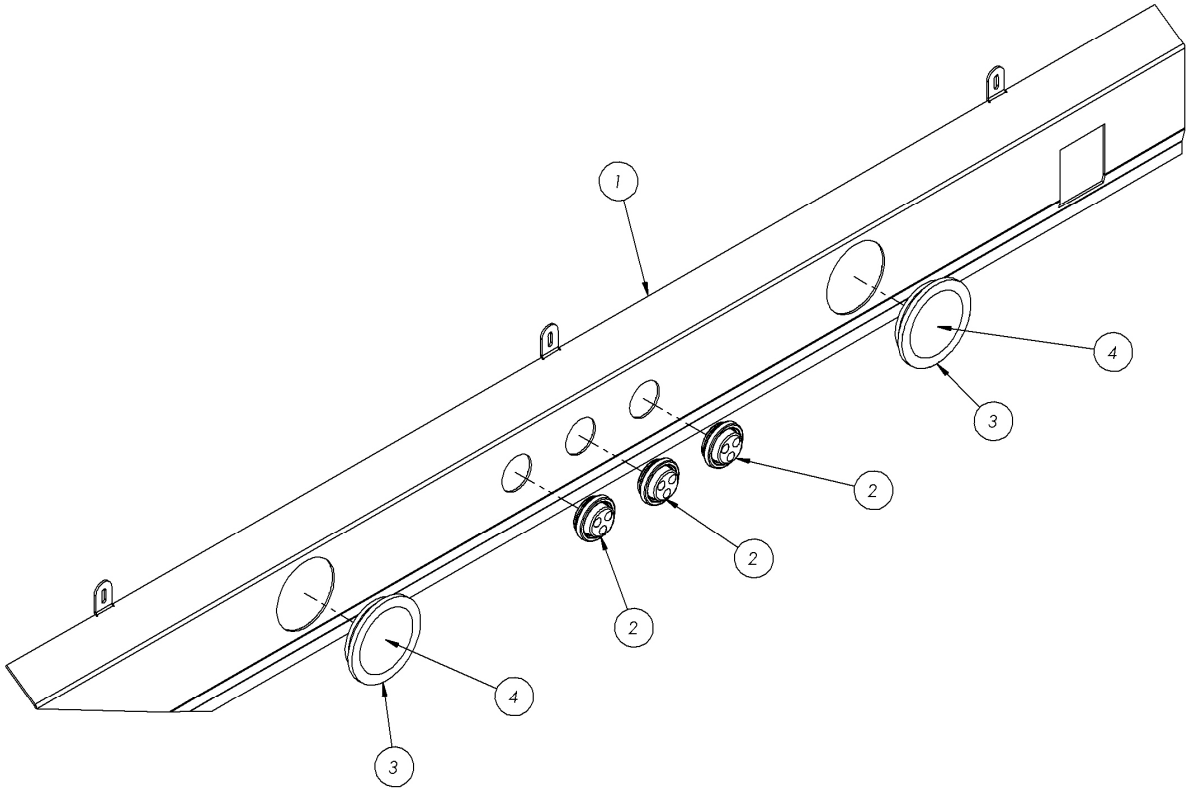
DATE:

THE INFORMATION CONTAINED IN THIS DRAWING IS THE SOLE PROPERTY OF CONCORD ROAD EQUIPMENT MFG. INC.. ANY REPRODUCTION IN PART OR AS A WHOLE WITHOUT THE WRITTEN PERMISSION OF CONCORD ROAD EQUIPMENT MFG. INC. IS PROHIBITED.

960 SERIES UNDER TAILGATE BERMING MACHINE

BERMING MACHINE LIGHTING COLOR CODES	
WIRE COLOR	FUNCTION / CONNECTION
YELLOW	GROUND
BROWN	MARKER
RED	RIGHT
GREEN	LEFT

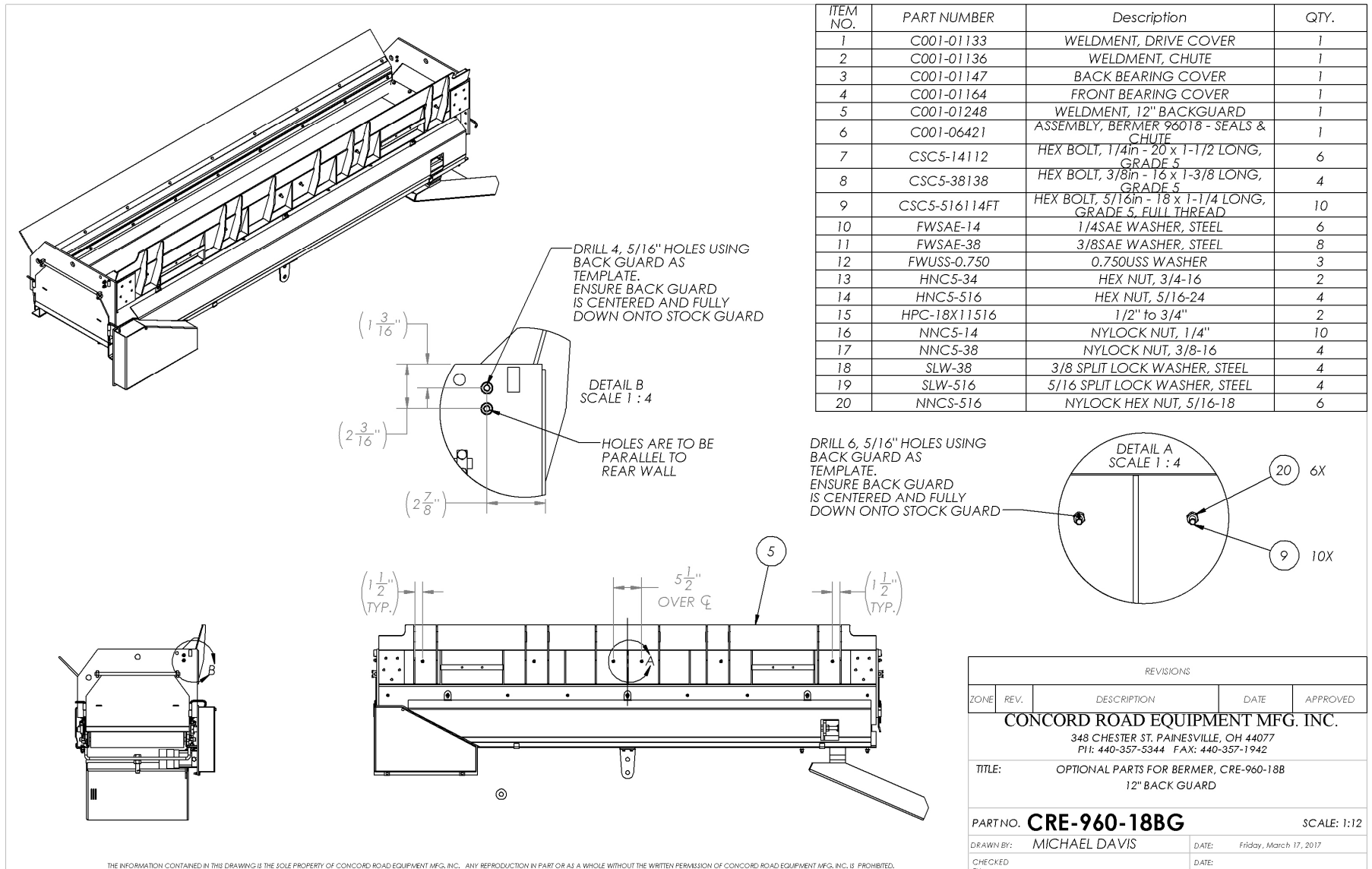
ITEM NO.	PART NUMBER	Description	QTY.
1	C001-01192	BACK BEARING COVER	1
2	C060-00301	2" RED LED CLEARANCE LIGHT - ASSEMBLED - 2" GROMMET	3
3	C060-00308	4" LIGHT GROMMET	2
4	C060-00349	4" ROUND LIGHT, FLAT LENS SYNCH SUPER-LED, RED	2



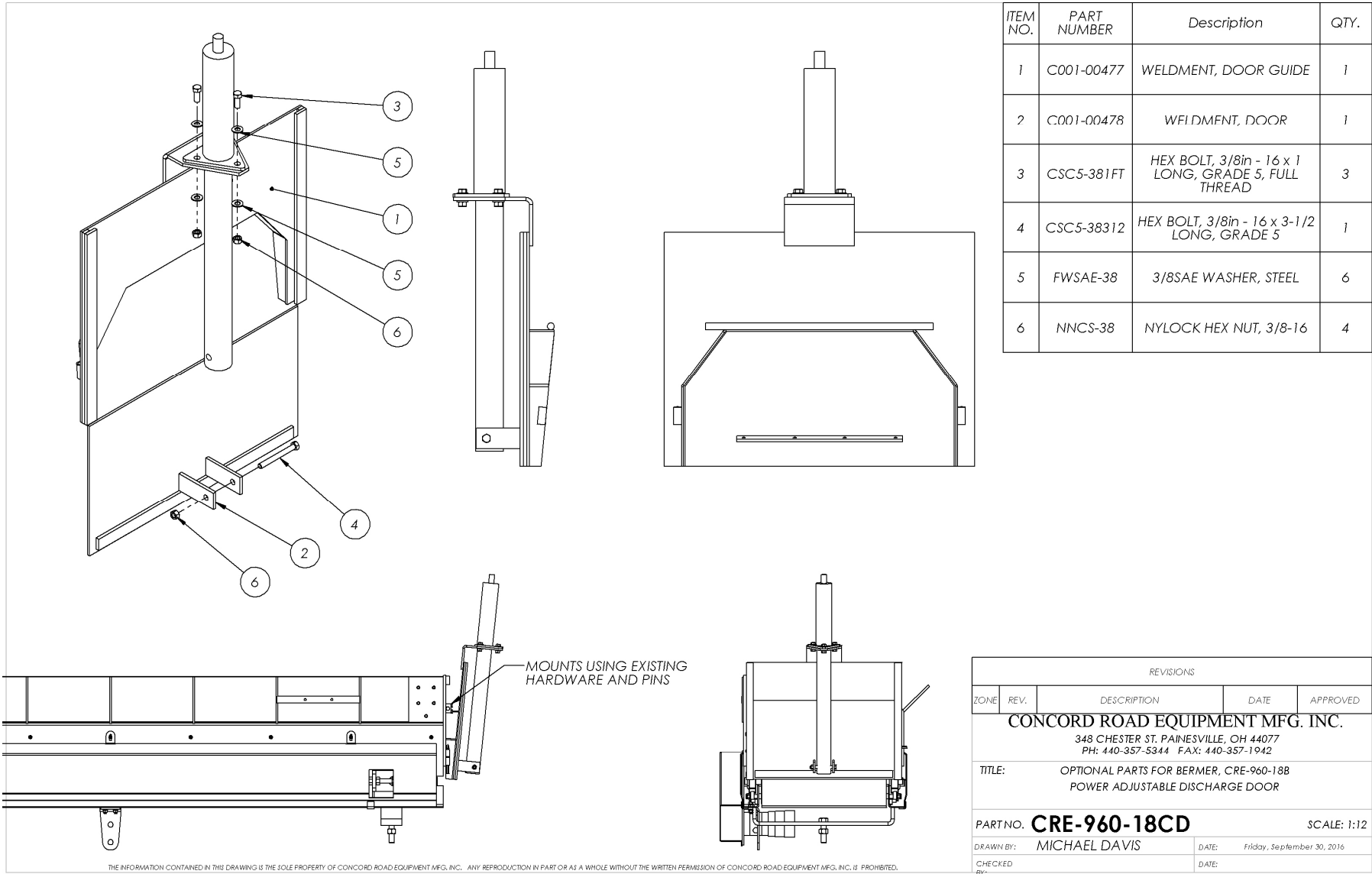
REVISIONS				
ZONE	REV.	DESCRIPTION	DATE	APPROVED
CONCORD ROAD EQUIPMENT MFG. INC. 348 CHESTER ST. PAINESVILLE, OH 44077 PH: 440-357-5344 FAX: 440-357-1942				
TITLE:		OPTIONAL PARTS FOR BERMER, CRE-960-18B REAR LIGHT PANEL		
PART NO.		CRE-960-18LG		SCALE: 1:12
DRAWN BY:		MICHAEL DAVIS	DATE:	Tuesday, October 25, 2016
CHECKED BY:			DATE:	

THE INFORMATION CONTAINED IN THIS DRAWING IS THE SOLE PROPERTY OF CONCORD ROAD EQUIPMENT MFG. INC.. ANY REPRODUCTION IN PART OR AS A WHOLE WITHOUT THE WRITTEN PERMISSION OF CONCORD ROAD EQUIPMENT MFG. INC. IS PROHIBITED.

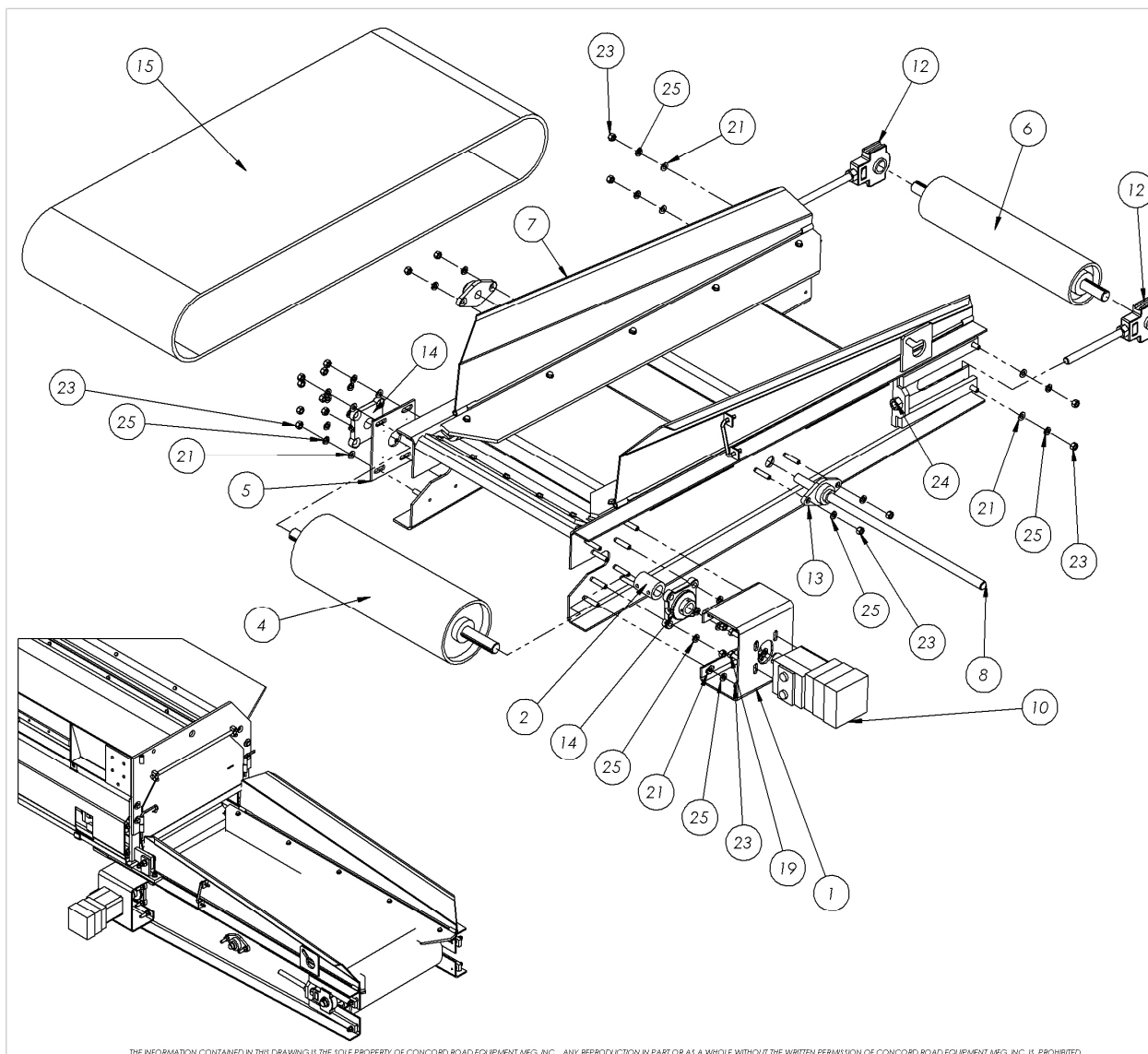
960 SERIES UNDER TAILGATE BERMING MACHINE



960 SERIES UNDER TAILGATE BERMING MACHINE



960 SERIES UNDER TAILGATE BERMING MACHINE



ITEM NO.	PART NUMBER	Description	QTY.
1	C001-00303	MOUNTING BRACKET, HYDRAULIC MOTOR	1
2	C001-00569	DRIVE COUPLER, BERMER EXTENSION SL16RD	1
3	C001-00571	BACK SKIRT, RUBBER	1
4	C001-00578	WELDMENT, 6" DRIVE ROLLER	1
5	C001-00579	WELDMENT, DRIVE ADJUSTMENT PLATE	1
6	C001-00580	WELDMENT, 4" DIA TAKE-UP ROLLER	1
7	C001-00584	WELDMENT, BERMER EXTENSION DOOR INSTALLATION	1
8	C001-00587	3/4" LOWER IDLER SHAFT	1
9	C001-00593	SIDE SKIRT, RUBBER	2
10	C010-00001	HYDRAULIC MOTOR, 4 BOLT, 17.9 CUBIC INCH DISPLACEMENT, ROLLER STATOR	1
11	C050-00004	6" DRIVE ROLLER	1
12	C050-00006	ASSEMBLY TAKE UP BEARING	2
13	C050-00008	BEARING, Ø3/4" BORE, 2 BOLT	2
14	C050-00009	1" 4-BOLT FLANGE BEARING	2
15	C050-00010	CONVEYOR BELT, BERMER EXTENSION	1
16	CSC5-123	HEX BOLT, 1/2in - 13 x 3 LONG, GRADE 5	1
17	CSC5-14114FT	HEX BOLT, 1/4in - 20 x 1-1/4 LONG, GRADE 5, FULL THREAD	5
18	CSC5-141FT	HEX BOLT, 1/4in - 20 x 1 LONG, GRADE 5, FULL THREAD	10
19	CSC5-381FT	HEX BOLT, 3/8in - 16 x 1 LONG, GRADE 5, FULL THREAD	4
20	FWSAE-14	1/4SAE WASHER, STEEL	20
21	FWUSS-0.375	0.375SAE WASHER, STEEL	12
22	HNC5-12	HEX NUT, 1/2-20	1
23	HNC5-38	HEX NUT, 3/8-24	24
24	HNC5-58	HEX NUT, 5/8-18	2
25	SLW-38	3/8 SPLIT LOCK WASHER, STEEL	28

CONCORD ROAD EQUIPMENT MFG. INC.

348 CHESTER ST. PAINESVILLE, OH 44077
PH: 440-357-5344 FAX: 440-357-1942

TITLE: OPTIONAL PARTS FOR BERMER, CRE-960-18B
48" FOLD UP CONVEYOR EXTENSION

PART NO. **CRE-960-18EX**

SCALE: 1:12

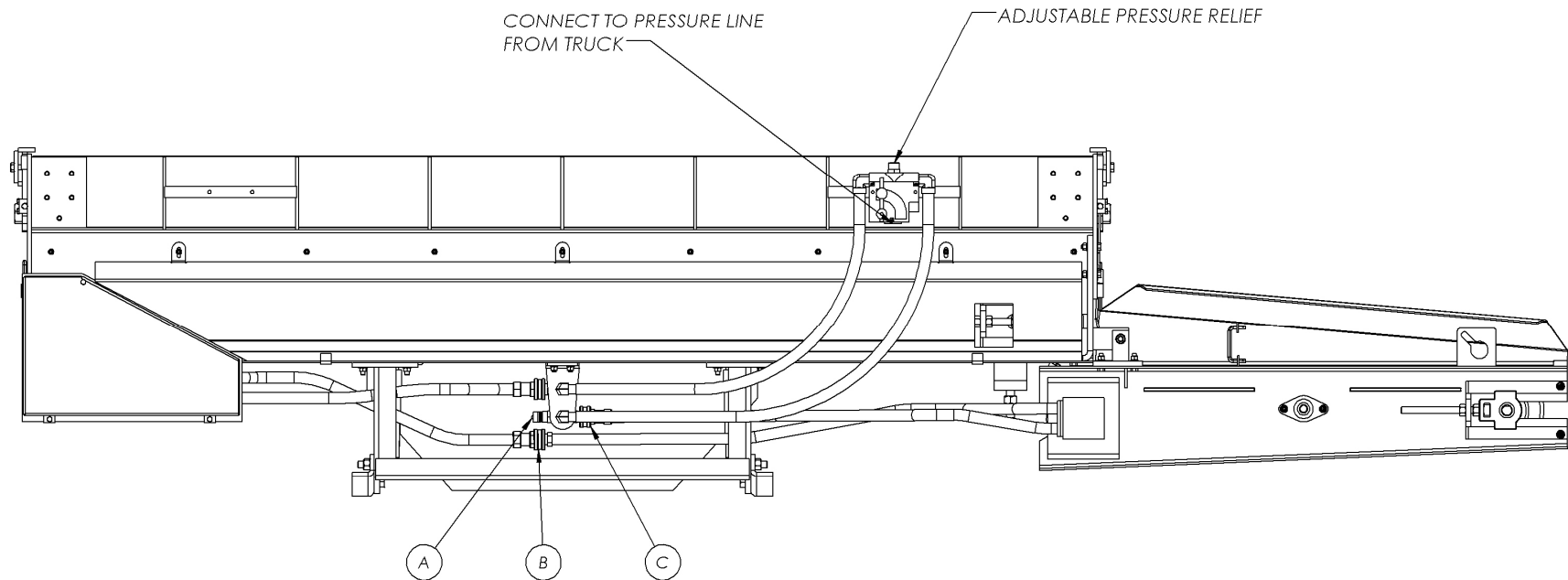
DRAWN BY: MICHAEL DAVIS

DATE: Thursday, October 27, 2016

CHECKED BY:

DATE:

THE INFORMATION CONTAINED IN THIS DRAWING IS THE SOLE PROPERTY OF CONCORD ROAD EQUIPMENT MFG. INC., ANY REPRODUCTION IN PART OR AS A WHOLE WITHOUT THE WRITTEN PERMISSION OF CONCORD ROAD EQUIPMENT MFG. INC. IS PROHIBITED.



- 1.) DISCONNECT RETURN LINE FROM MAIN DRIVE MOTOR AT POINT, (A) .
- 2.) CONNECT THIS LINE TO THE INLET OF THE EXTENSION MOTOR AS SHOWN AT POINT, (B) .
- 3.) CONNECT THE RETURN LINE OF THE EXTENSION MOTOR AT POINT, (C) .

THE INFORMATION CONTAINED IN THIS DRAWING IS THE SOLE PROPERTY OF CONCORD ROAD EQUIPMENT MFG. INC.. ANY REPRODUCTION IN PART OR AS A WHOLE WITHOUT THE WRITTEN PERMISSION OF CONCORD ROAD EQUIPMENT MFG. INC. IS PROHIBITED.

CONCORD ROAD EQUIPMENT MFG. INC.	
348 CHESTER ST. PAINESVILLE, OH 44077	
PH: 440-357-5344 FAX: 440-357-1942	
TITLE:	OPTIONAL PARTS FOR BERMER, CRE-960-18B 48" FOLD UP CONVEYOR EXTENSION HYDRAULIC EXTENSION HOSE HOOKUP DIAGRAM
PART NO. CRE-960-18EX	SCALE: 1:12
DRAWN BY: MICHAEL DAVIS	DATE: Thursday, October 27, 2016
CHECKED BY:	DATE:

960 SERIES UNDER TAILGATE BERMING MACHINE

ITEM NO.	PART NUMBER	Description	QTY.
1	C001-00574	WELDMENT, MOUNTING BRACKET, BERMER EXTENSION	2
2	C001-00575	WELDMENT, MOUNTING BRACKET, EXTENSION SIDE	2
3	C001-00585	ASSEMBLY, 4FT BERMER EXTENSION	1
4	C001-01133	WELDMENT, DRIVE COVER	1
5	C001-01147	BACK BEARING COVER	1
6	C001-01164	FRONT BEARING COVER	1
7	C001-06421	ASSEMBLY, BERMER 96018 - SEALS & CHUTE	1
8	CSC5-141FT	HEX BOLT, 1/4in - 20 x 1 LONG, GRADE 5, FULL THREAD	2
9	CSC5-144	HEX BOLT, 1/4in - 20 x 4 LONG, GRADE 5	1
10	CSC5-38112	HEX BOLT, 3/8in - 16 x 1-1/2 LONG, GRADE 5	4
11	CSC5-38114FT	HEX BOLT, 3/8in - 16 x 1-1/4 LONG, GRADE 5, FULL THREAD	2
12	CSC5-38138	HEX BOLT, 3/8in - 16 x 1-3/8 LONG, GRADE 5	5
13	CSC8-122FT	HEX BOLT, 1/2in - 13 x 2 LONG, GRADE 8, FULL THREAD	2
14	FWF-0.375	0.375SAE WASHER, STEEL	4
15	HNC5-12	HEX NUT, 1/2-20	2
16	HNC5-14	HEX NUT, 1/4-28	3
17	HNC5-38	HEX NUT, 3/8-24	10
18	NNCS-34	NYLOCK HEX NUT, 3/4-10	1
19	SLW-12	1/2 SPLIT LOCK WASHER, STEEL	2
20	SLW-14	1/4 SPLIT LOCK WASHER, STEEL	2
21	SLW-38	3/8 SPLIT LOCK WASHER, STEEL	10

CONCORD ROAD EQUIPMENT MFG. INC.
348 CHESTER ST. PAINESVILLE, OH 44077
PH: 440-357-5344 FAX: 440-357-1942

TITLE: OPTIONAL PARTS FOR BERMER, CRE-960-18B
48" FOLD UP CONVEYOR EXTENSION
MOUNTING BRACKET INSTRUCTIONS

PART NO. **CRE-960-18EX** SCALE: 1:12

DRAWN BY: MICHAEL DAVIS DATE: Thursday, October 27, 2016

CHECKED BY: DATE:

THE INFORMATION CONTAINED IN THIS DRAWING IS THE SOLE PROPERTY OF CONCORD ROAD EQUIPMENT MFG. INC.. ANY REPRODUCTION IN PART OR AS A WHOLE WITHOUT THE WRITTEN PERMISSION OF CONCORD ROAD EQUIPMENT MFG. INC. IS PROHIBITED.

CONCORD ROAD EQUIPMENT MFG., INC.
CRE-960-HP
OPERATION AND MAINTANCE
PORTABLE HYDRAULIC POWE PACK

INTRODUCTION:

The Concord Portable Hydraulic Power Pack can operate many different types of hydraulic tools and equipment. ALWAYS refer to the manufacturer of the tools and/or the equipment that you will be using to make sure that the PHPP is compatible with such equipment, i.e; gallons per minute, and working pressure.

PHPP Rating:

MAXIMUM PRESSURE: 2500 PSI @ 3600 RPM

MAXIMUM OPERATING PRESSURE: 1750 PSI @ 3400 RPM

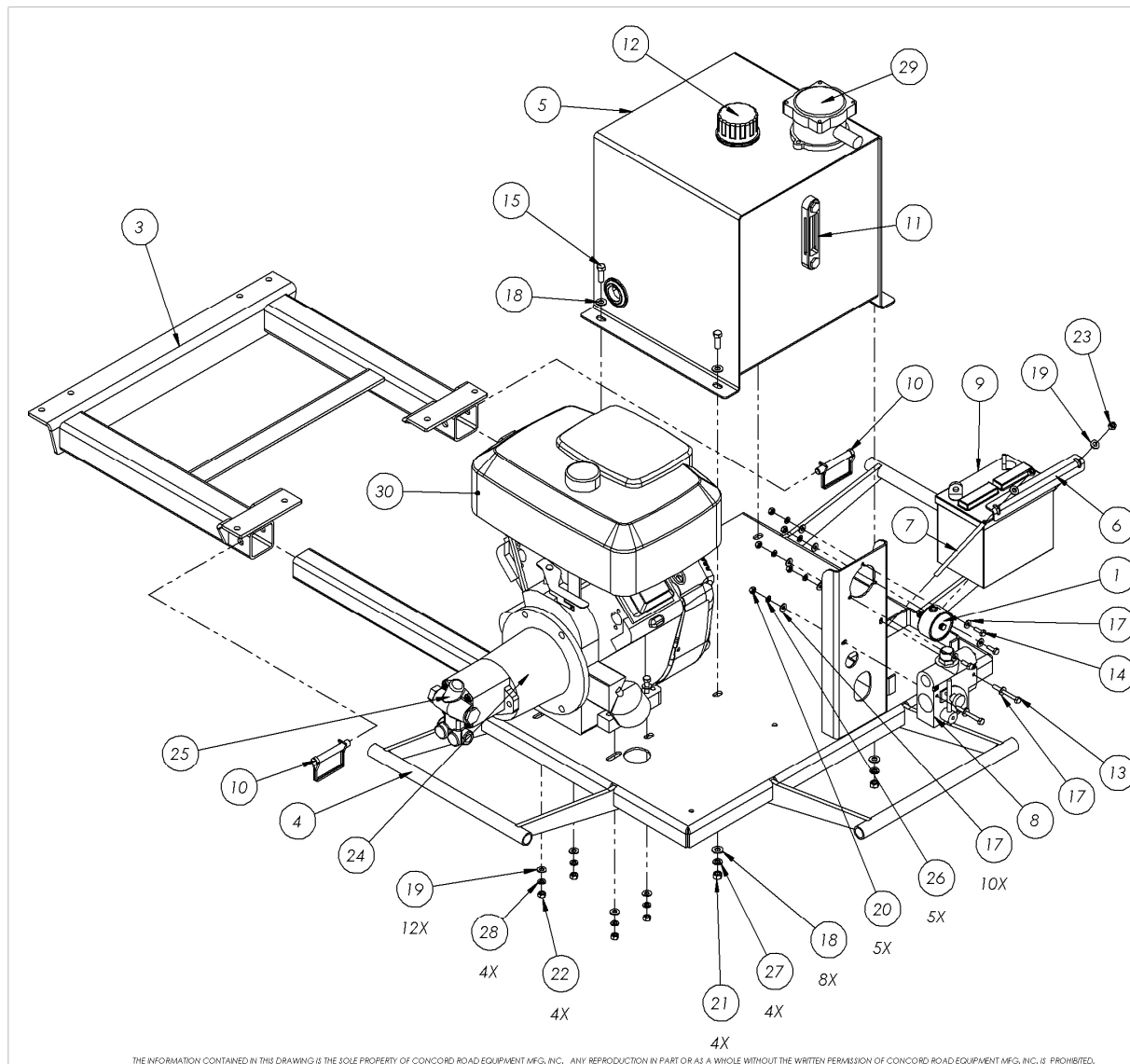
MAXIUM GPM RATING: 14GPM @ 3600 RPM

MAXIMUM OPERATING GPM: 12 GPM @ 3400 RPM

OPERATION:

- 1) ALWAYS make sure that the PHPP is properly secured to prime mover.
- 2) ALWAYS make sure that engine and oil levels are properly maintained.
 - a. **HYDRAULIC OIL:** CITGO AW-46 or equal
 - b. **ENGINE OIL:** Refer to Briggs & Stratton Operation/Maintenance Instruction Manual
 - c. **HYDRAULIC OIL:** Change after first 50 hours of use and every 150 hours of use thereafter.
 - d. **HYDRAULIC OIL FILTER:** Change after first 50 hours and every 150 hours thereafter.
- 3) Always have hydraulic pressure and return lines connected to the equipment in use before starting engine, making sure that the flow control valve handle is in the off position.
- 4) Start engine and let it warm up before applying any work load to the unit. After warm up, raise engine RPM and hydraulic flow control to required ratings as necessary to operate equipment as needed.
- 5) After work is completed, return flow control to the off position, allowing engine to idle down and allotting sufficient cooling time before turning engine off.

960 SERIES UNDER TAILGATE BERMING MACHINE



ITEM NO.	PART NUMBER	Description	QTY.
1	3842K723		1
2	44605K225		1
3	C001-03573	WELDMENT, MOUNTING BRACKET	1
4	C001-03574	PLATFORM WELDMENT	1
5	C001-03575	PORTABLE HYDRAULIC POWER PACK TANK WELDMENT	1
6	C001-03592	BATTERY HOLD DOWN	1
7	C001-03593	BATTERY HOLD DOWN - 5/16"-18	2
8	C010-00027	FLOW CONTROL, FCR51-3/4	1
9	C030-00053	PART DESCRIPTION	1
10	C060-00102	1/2" X 3" SNAPPER RING	2
11	C060-00188	SITE GAUGE W/ THERMO LENZ: T-LLG-5	1
12	C060-00189	FILLER BREATHER LENZ: 57XL-40	1
13	CSC5-14212	HEX BOLT, 1/4in - 20 x 2-1/2 LONG, GRADE 5	2
14	CSC5-1434FT	HEX BOLT, 1/4in - 20 x 3/4 LONG, GRADE 5, FULL THREAD	3
15	CSC5-38118FT	HEX BOLT, 3/8in - 16 x 1-1/8 LONG, GRADE 5, FULL THREAD	4
16	CSC5-5162	HEX BOLT, 5/16in - 18 x 2 LONG, GRADE 5	4
17	FWSAE-14	1/4SAE WASHER, STEEL	10
18	FWSAE-38	3/8SAE WASHER, STEEL	8
19	FWSAE-516	5/16SAE WASHER, STEEL	12
20	HNC5-14	HEX NUT, 1/4-28	5
21	HNC5-38	HEX NUT, 3/8-24	4
22	HNC5-516	HEX NUT, 5/16-24	4
23	NNCS-516	NYLOCK HEX NUT, 5/16-18	4
24	PEM-HH-6017	PEM-HH-6017 FLANGE	1
25	S9S16 REXROTH	S9S16 REXROTH PUMP	1
26	SLW-14	1/4 SPLIT LOCK WASHER, STEEL	5
27	SLW-38	3/8 SPLIT LOCK WASHER, STEEL	4
28	SLW-516	5/16 SPLIT LOCK WASHER, STEEL	4
29	TIF06-010-G	TIF06-010-G FILTER HEAD	1
30	C055-00033	PART DESCRIPTION	1

CONCORD ROAD EQUIPMENT MFG. INC.

348 CHESTER ST. PAINESVILLE, OH 44077
PH: 440-357-5344 FAX: 440-357-1942

TITLE: OPTIONAL PARTS FOR BERMER, CRE-960-18B
CRE-960-18HP - PORTABLE HYDRAULIC POWER PACK ASSEMBLY

PART NO. C140-00019

SCALE: 1:64

DRAWN BY: MICHAEL DAVIS

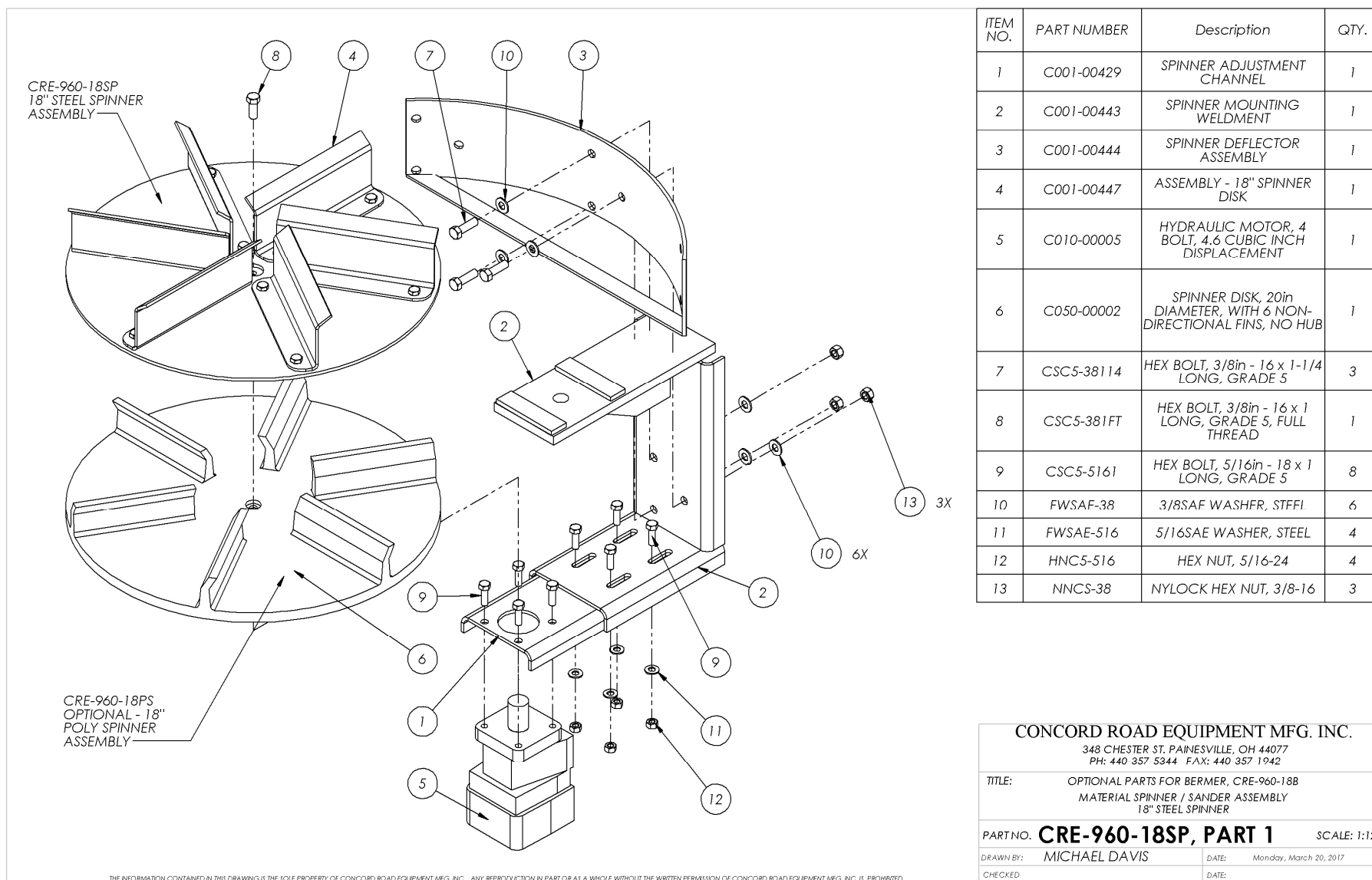
DATE: Wednesday, October 26, 2016

CHECKED BY:

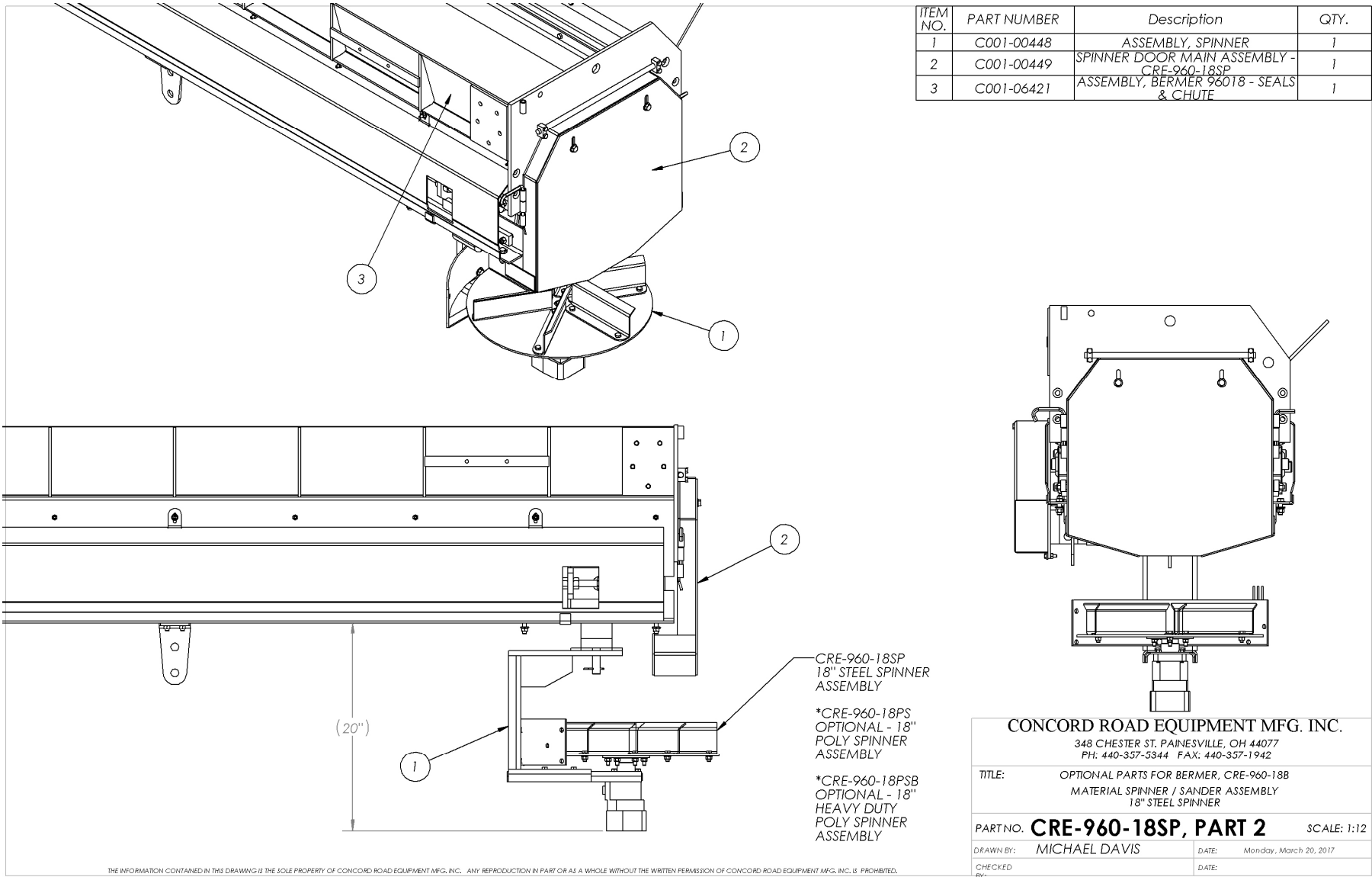
DATE:

THE INFORMATION CONTAINED IN THIS DRAWING IS THE SOLE PROPERTY OF CONCORD ROAD EQUIPMENT MFG. INC.. ANY REPRODUCTION IN PART OR AS A WHOLE WITHOUT THE WRITTEN PERMISSION OF CONCORD ROAD EQUIPMENT MFG. INC. IS PROHIBITED.

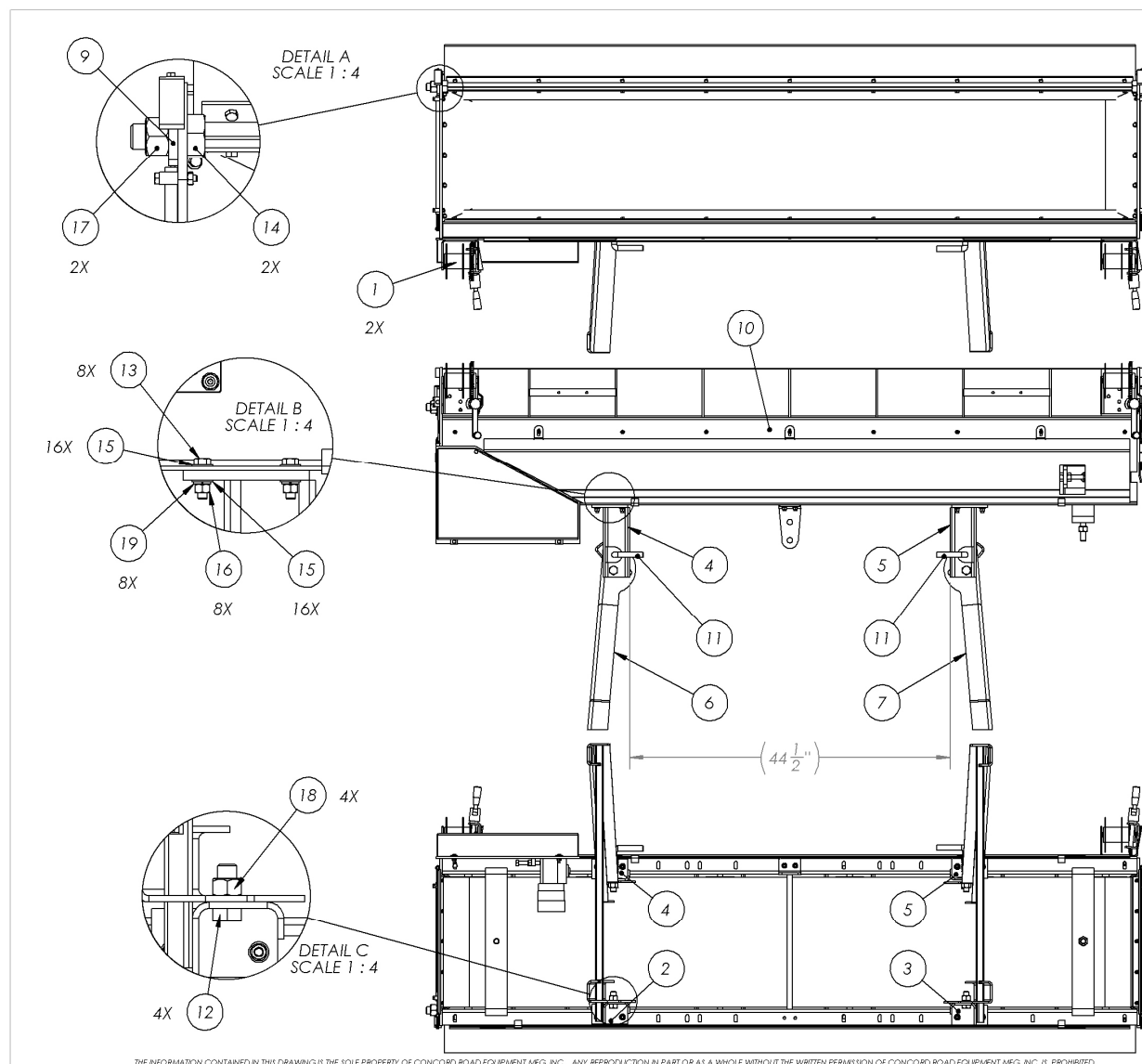
960 SERIES UNDER TAILGATE BERMING MACHINE



960 SERIES UNDER TAILGATE BERMING MACHINE



960 SERIES UNDER TAILGATE BERMING MACHINE



ITEM NO.	PART NUMBER	Description	QTY.
1	53513-24	WINCH WITH HANDLE	2
2	C001-02222	WELDMENT, UPPER FRONT LEG, CURBSIDE	1
3	C001-02223	WELDMENT, UPPER FRONT LEG, CURBSIDE	1
4	C001-02224	WELDMENT, UPPER REAR LEG, STREETSIDE	1
5	C001-02225	WELDMENT, UPPER REAR LEG, CURBSIDE	1
6	C001-02226	WELDMENT, LOWER LEG, STREETSIDE	1
7	C001-02227	WELDMENT, LOWER LEG, CURBSIDE	1
8	C001-02743	WELDMENT, CHAIN MOUNTING PLATE	1
9	C001-02744	WELDMENT, CHAIN MOUNTING PLATE, CURBSIDE	1
10	C001-06421	ASSEMBLY, BERMER 96018 - SEALS & CHUTE	1
11	C060-00101	3/4" SPRING LATCH - B2596	2
12	CSC5-34134FT	HEX BOLT, 3/4in - 10 x 1-3/4 LONG, GRADE 5, FULL THREAD	4
13	CSC5-38138	HEX BOLT, 3/8in - 16 x 1-3/8 LONG, GRADE 5	8
14	CSC8-1214FT	HEX BOLT, 1in - 8 x 2-1/4 LONG, GRADE 8, FULL THREAD	2
15	FWSAE-38	3/8SAE WASHER, STEEL	16
16	HNC5-38	HEX NUT, 3/8-24	8
17	NNCS-1	NYLOCK HEX NUT, 1-8	2
18	NNCS-34	NYLOCK HEX NUT, 3/4-10	4
19	SLW-38	3/8 SPLIT LOCK WASHER, STEEL	8

CONCORD ROAD EQUIPMENT MFG. INC.

348 CHESTER ST. PAINESVILLE, OH 44077
PH: 440-357-5344 FAX: 440-357-1942

TITLE: OPTIONAL PARTS FOR BERMER, CRE-960-18B
FOLDING LEG AND WINCH MOUNTING KIT

PART NO. CRE-960-18FL

SCALE: 1:16

DRAWN BY: MICHAEL DAVIS

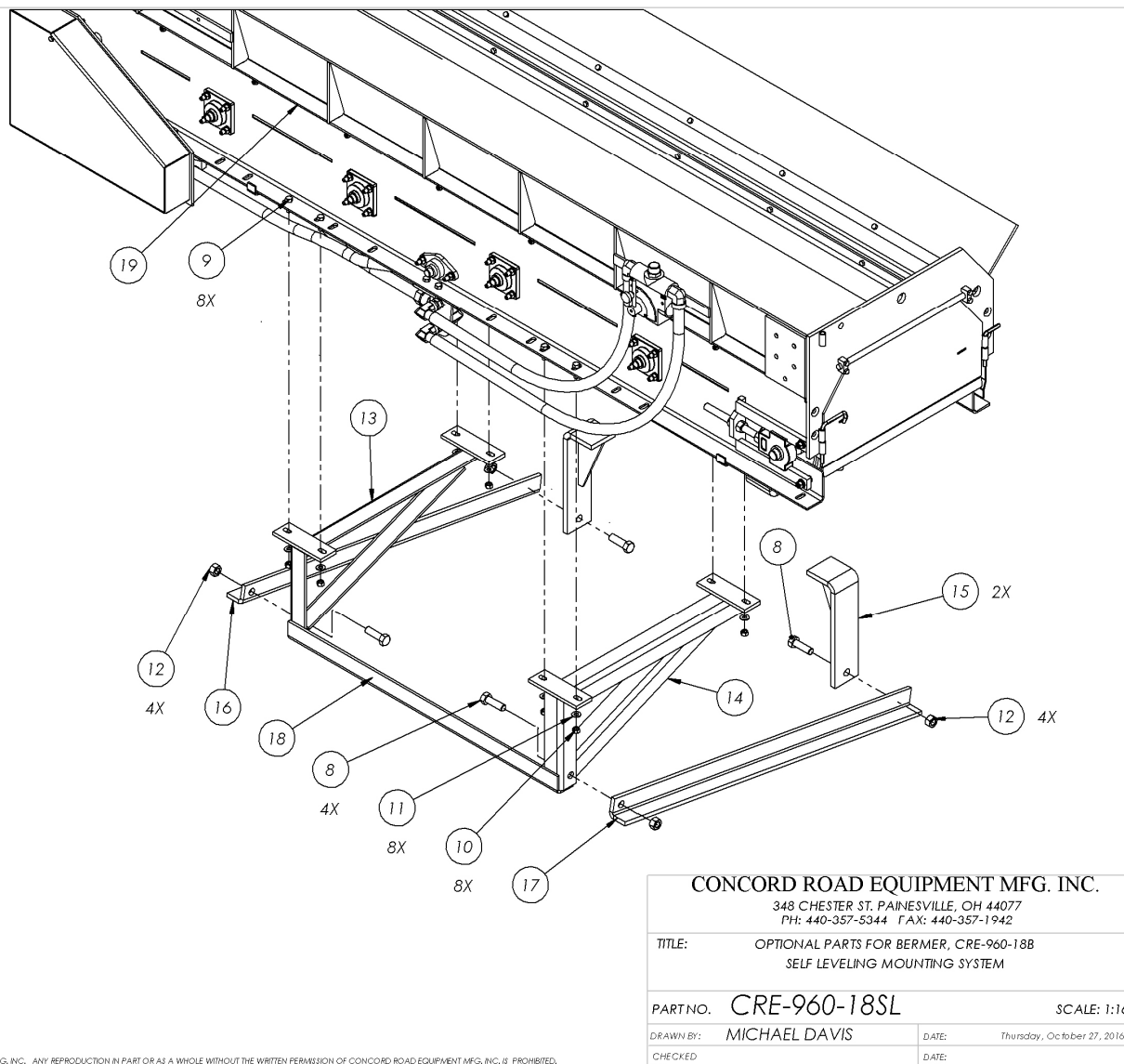
DATE: Thursday, October 27, 2016

CHECKED BY:

DATE:

960 SERIES UNDER TAILGATE BERMING MACHINE

ITEM NO.	PART NUMBER	Description	QTY.
1	CSC5-141FT	HEX BOLT, 1/4in - 20 x 1 LONG, GRADE 5, FULL THREAD	2
2	HNC5-14	HEX NUT, 1/4-28	3
3	CSC5-144	HEX BOLT, 1/4in - 20 x 4 LONG, GRADE 5	1
4	SLW-14	1/4 SPLIT LOCK WASHER, STEEL	2
5	NNCS-34	NYLOCK HEX NUT, 3/4-10	1
6	CSC8-12	HEX BOLT, 1in - 8 x 2 LONG, GRADE 8	1
7	HNC-1	HEX NUT, 1-8	1
8	CSC5-582	HEX BOLT, 5/8in - 11 x 2 LONG, GRADE 5	4
9	CSC5-38114FT	HEX BOLT, 3/8in - 16 x 1-1/4 LONG, GRADE 5, FULL THREAD	8
10	HNC5-38	HEX NUT, 3/8-24	8
11	FWSAE-38	3/8SAE WASHER, STEEL	8
12	NNCS-58	NYLOCK HEX NUT, 5/8-11	4
13	C001-01205	WELDMENT, BRACKET, A-FRAME, STREETSIDE	1
14	C001-01206	WELDMENT, BRACKET, A-FRAME, CURBSIDE	1
15	C001-01207	WELDMENT, FRAME MOUNTING BAR	2
16	C001-01212	PUSH BAR, CURBSIDE	1
17	C001-01215	PUSH BAR, STREETSIDE	1
18	C001-01218	CROSS SUPPORT BRACE	1
19	C001-06421	ASSEMBLY, BERMER 96018 - SEALS & CHUTE	1
20	C001-01164	FRONT BEARING COVER	1
21	C001-01133	WELDMENT, DRIVE COVER	1
22	C001-01147	BACK BEARING COVER	1
23	C010-00027	FLOW CONTROL, FCR51-3/4	1



CONCORD ROAD EQUIPMENT MFG. INC.

348 CHESTER ST. PAINESVILLE, OH 44077
PH: 440-357-5344 FAX: 440-357-1942

TITLE: OPTIONAL PARTS FOR BERMER, CRE-960-18B
SELF LEVELING MOUNTING SYSTEM

PART NO. CRE-960-18SL

SCALE: 1:16

DRAWN BY: MICHAEL DAVIS

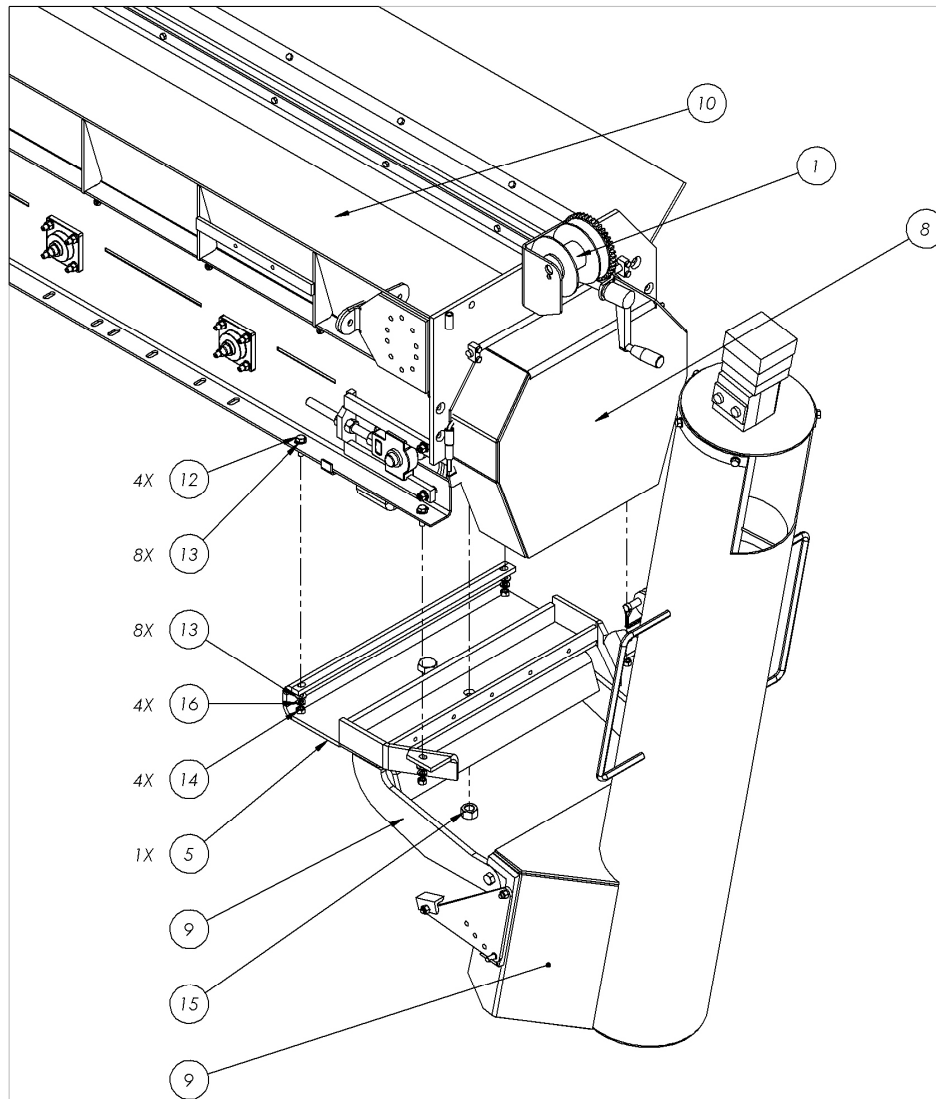
DATE: Thursday, October 27, 2016

CHECKED BY:

DATE:

THE INFORMATION CONTAINED IN THIS DRAWING IS THE SOLE PROPERTY OF CONCORD ROAD EQUIPMENT MFG. INC.. ANY REPRODUCTION IN PART OR AS A WHOLE WITHOUT THE WRITTEN PERMISSION OF CONCORD ROAD EQUIPMENT MFG. INC. IS PROHIBITED.

960 SERIES UNDER TAILGATE BERMING MACHINE



ITEM NO.	PART NUMBER	Description	QTY.
1	53513-24	WINCH WITH HANDLE	1
2	C001-01133	WELDMENT, DRIVE COVER	1
3	C001-01147	BACK BEARING COVER	1
4	C001-01164	FRONT BEARING COVER	1
5	C001-01330	WELDMENT, PIVOT SUPPORT PLATE	1
6	C001-02088	STORAGE LOCKING BAR BRACKET	1
7	C001-02089	STORAGE LOCKING BAR	1
8	C001-02090	WELDMENT, BERMER/AUGER DOOR	1
9	C001-02091	ASSEMBLY, 60" AUGER EXTENSION	1
10	C001-06421	ASSEMBLY, BERMER 96018 - SEALS & CHUTE	1
11	C060-00102	1/2" X 3" SNAPPER RING	1
12	CSC5-38138	HEX BOLT, 3/8in - 16 x 1-3/8 LONG, GRADE 5	4
13	FWSAE-38	3/8SAE WASHER, STEEL	8
14	HNC5-38	HEX NUT, 3/8-24	4
15	NNCS-34	NYLOCK HEX NUT, 3/4-10	1
16	SLW-38	3/8 SPLIT LOCK WASHER, STEEL	4

CONCORD ROAD EQUIPMENT MFG. INC.

348 CHESTER ST. PAINESVILLE, OH 44077
PH: 440-357-5344 FAX: 440-357-1942

TITLE: OPTIONAL PARTS FOR BERMER, CRE-960-18B
60 INCH ADJUSTABLE AUGER EXTENSION

PART NO. CRE-960-18AU

SCALE: 1:16

DRAWN BY: MICHAEL DAVIS

DATE: Thursday, October 27, 2016

CHECKED BY:

DATE:

THE INFORMATION CONTAINED IN THIS DRAWING IS THE SOLE PROPERTY OF CONCORD ROAD EQUIPMENT MFG. INC.. ANY REPRODUCTION IN PART OR AS A WHOLE WITHOUT THE WRITTEN PERMISSION OF CONCORD ROAD EQUIPMENT MFG. INC. IS PROHIBITED.